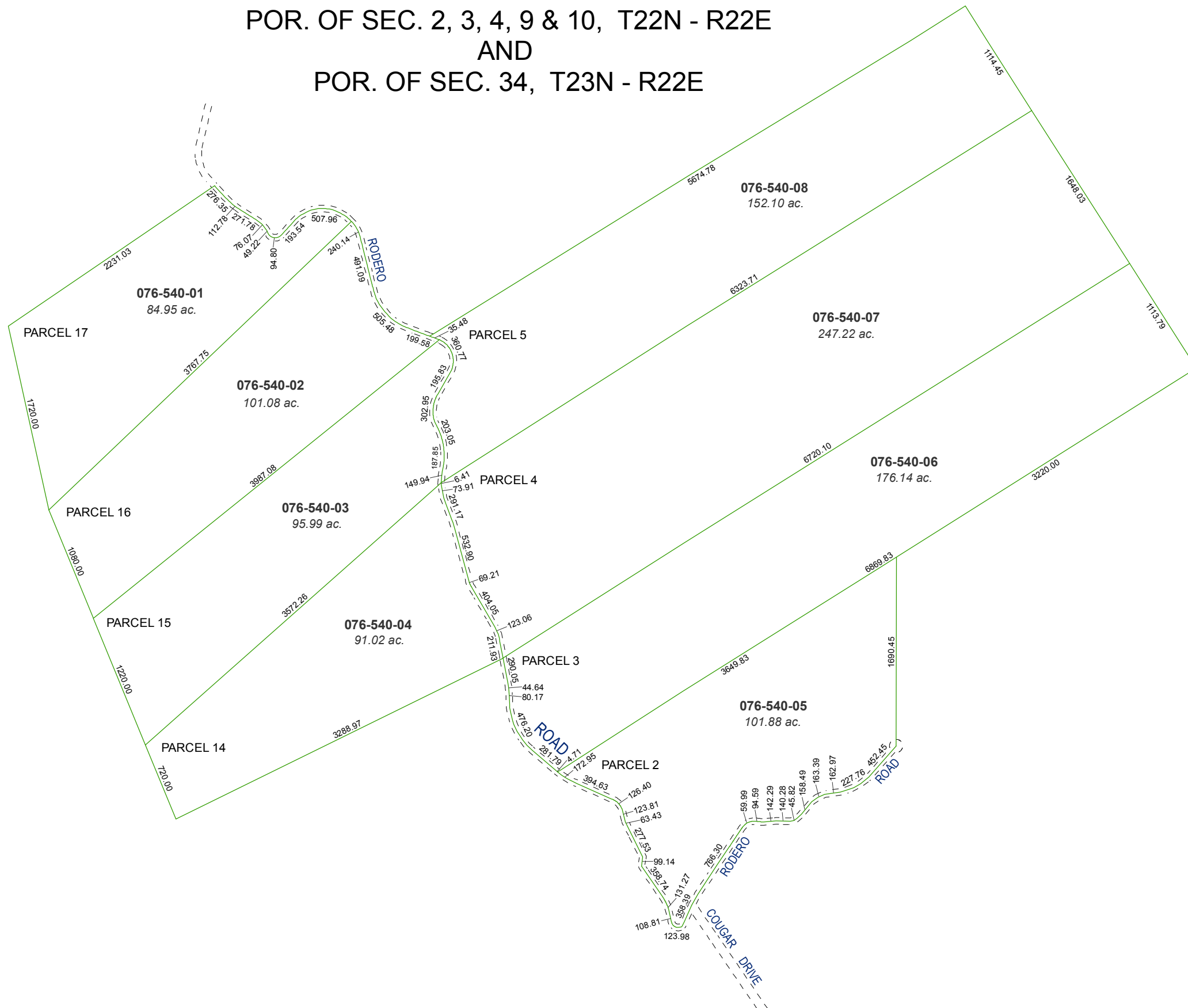


MAP OF DIVISION INTO LARGE PARCELS # 34 MONTE CRISTO RANCH UNIT NO. 1

POR. OF SEC. 2, 3, 4, 9 & 10, T22N - R22E
AND
POR. OF SEC. 34, T23N - R22E

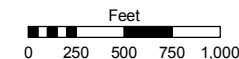


Assessor's Map Number
076-54

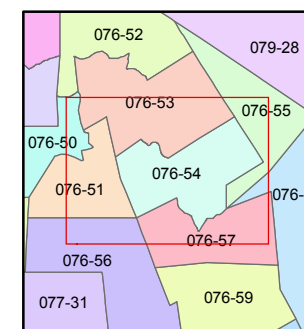
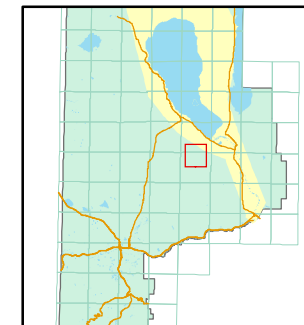
STATE OF NEVADA
**WASHOE COUNTY
ASSESSOR'S OFFICE**

Joshua G. Wilson, Assessor

1001 East Ninth Street
Building D
Reno, Nevada 89512
(775) 328-2231



1 inch = 1,000 feet



created by: TWT 5/17/2011

last updated: _____

area previously shown on map(s) _____

NOTE: This map was prepared for the use of the Washoe County Assessor for assessment and illustrative purposes only. It does not represent a survey of the premises. No liability is assumed as to the sufficiency or accuracy of the data delineated hereon.