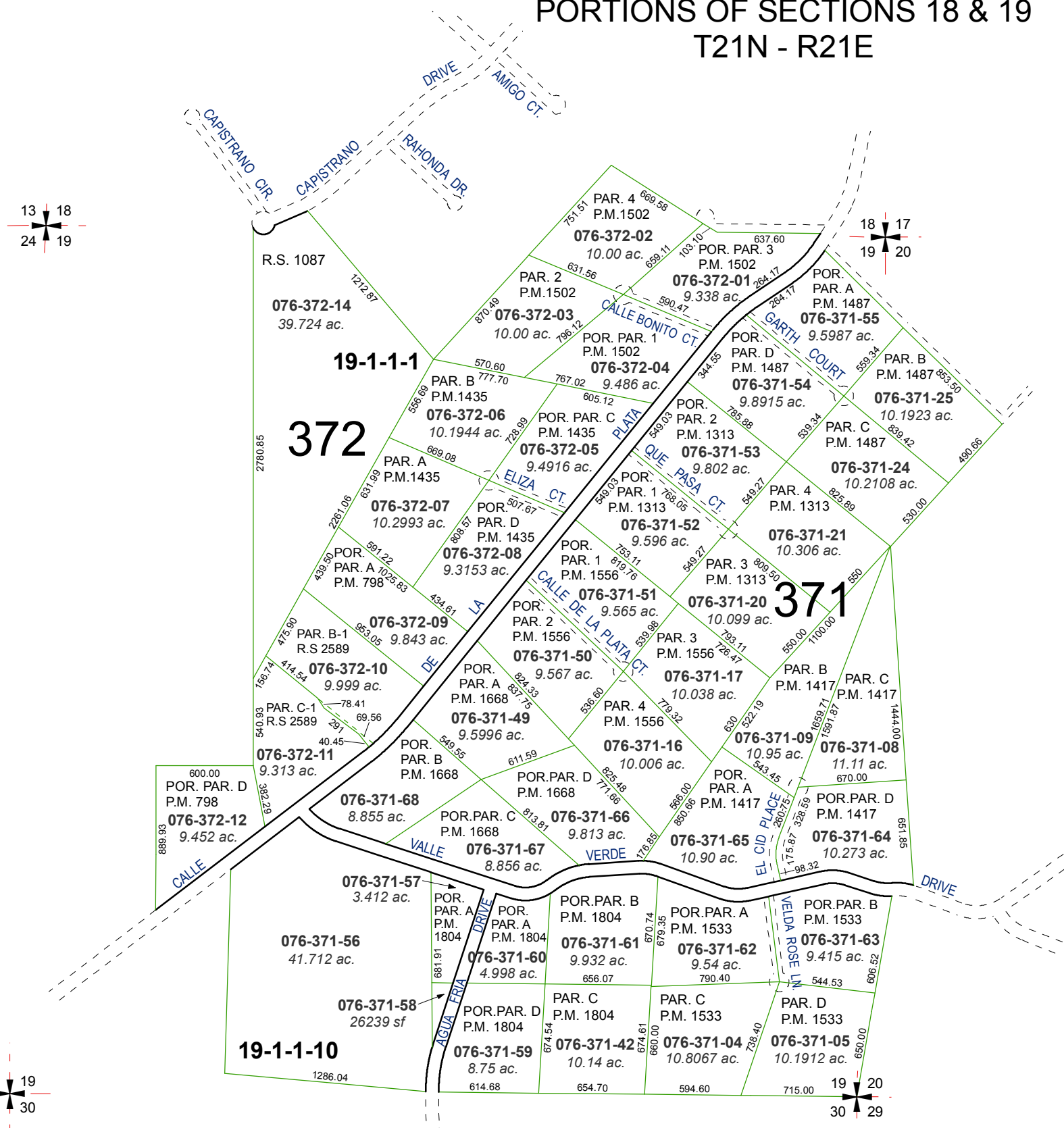


MAP OF DIVISION INTO LARGE PARCELS # 23 SPANISH SPRINGS VALLEY RANCHES - UNIT 2

RECORD OF SURVEY # 1095

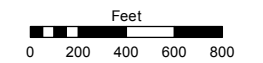
PORTIONS OF SECTIONS 18 & 19
T21N - R21E



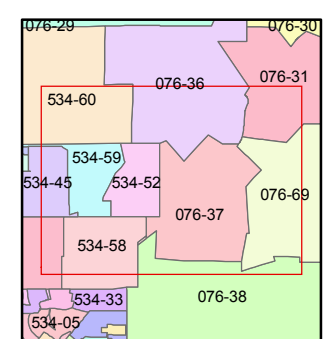
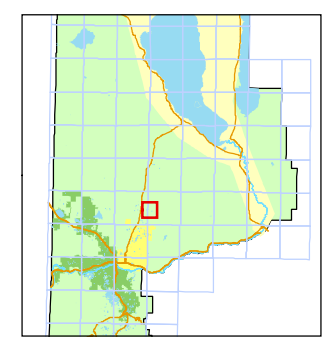
Assessor's Map Number
076-37

STATE OF NEVADA
WASHOE COUNTY
ASSESSOR'S OFFICE
Joshua G. Wilson, Assessor

1001 East Ninth Street
Building D
Reno, Nevada 89512
(775) 328-2231



1 inch = 800 feet



created by: TWT 6/27/2011

last updated: KSB 6/25/12

area previously shown on map(s)

NOTE: This map was prepared for the use of the Washoe County Assessor for assessment and illustrative purposes only. It does not represent a survey of the premises. No liability is assumed as to the sufficiency or accuracy of the data delineated hereon.