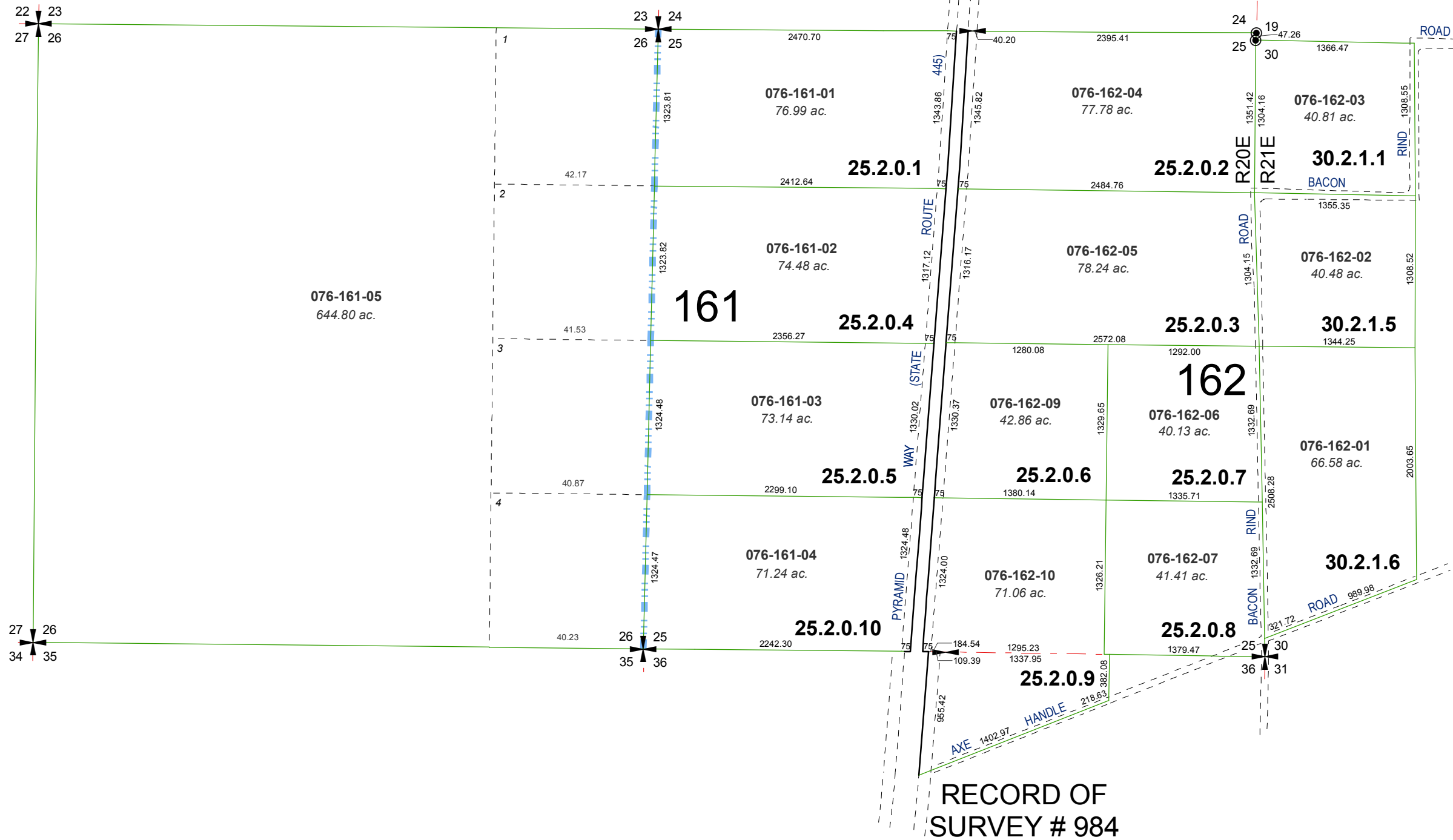


MAP OF DIVISION INTO LARGE PARCELS # 10 PALOMINO VALLEY - UNIT 5

SECTIONS 25, 26 & POR. SEC. 36, T22N - R20E
& POR. SEC. 30, T22N - R21E

RECORD OF SURVEY # 985

RECORD OF SURVEY # 946



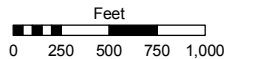
Assessor's Map Number

076-16

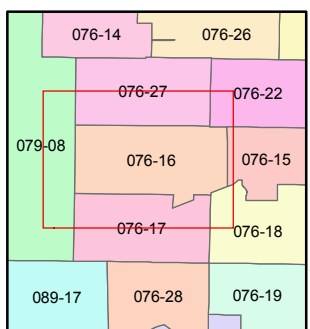
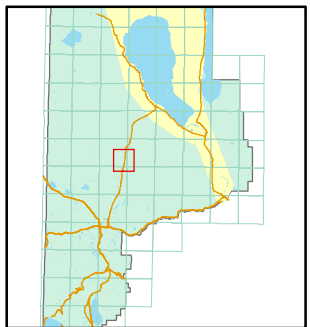
STATE OF NEVADA
WASHOE COUNTY
ASSESSOR'S OFFICE

Joshua G. Wilson, Assessor

1001 East Ninth Street
Building D
Reno, Nevada 89512
(775) 328-2231



1 inch = 1,000 feet



created by: TWT 6/3/2011

last updated: _____

area previously shown on map(s)

NOTE: This map was prepared for the use of the Washoe County Assessor for assessment and illustrative purposes only. It does not represent a survey of the premises. No liability is assumed as to the sufficiency or accuracy of the data delineated hereon.