

LAND MAP # 80

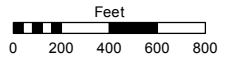
MAP OF DIVISION INTO LARGE PARCELS # 3 PALOMINO VALLEY - UNIT 3

Assessor's Map Number

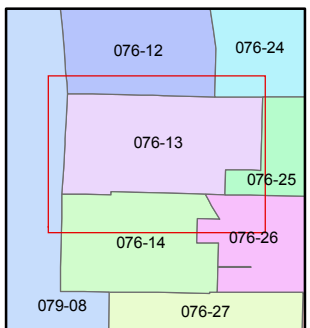
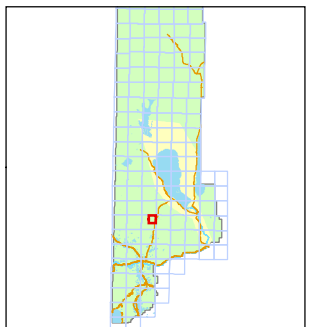
076-13

STATE OF NEVADA
WASHOE COUNTY
ASSESSOR'S OFFICE
Joshua G. Wilson, Assessor

1001 East Ninth Street
Building D
Reno, Nevada 89512
(775) 328-2231



1 inch = 800 feet

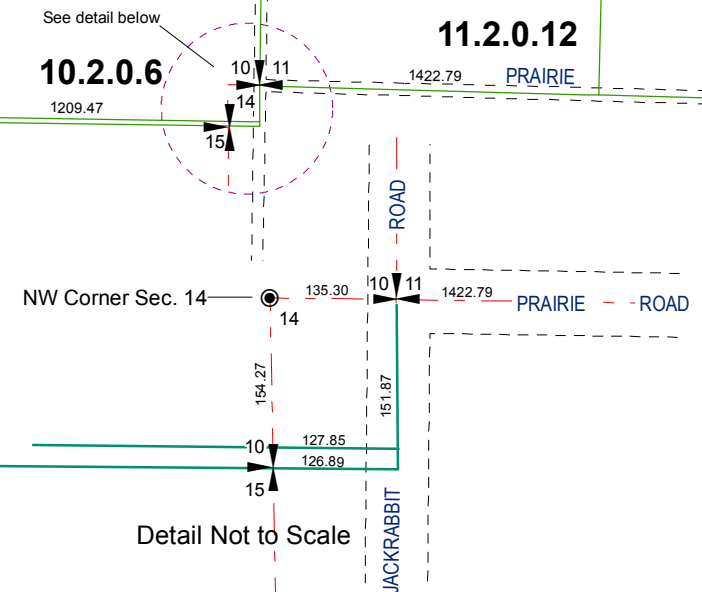
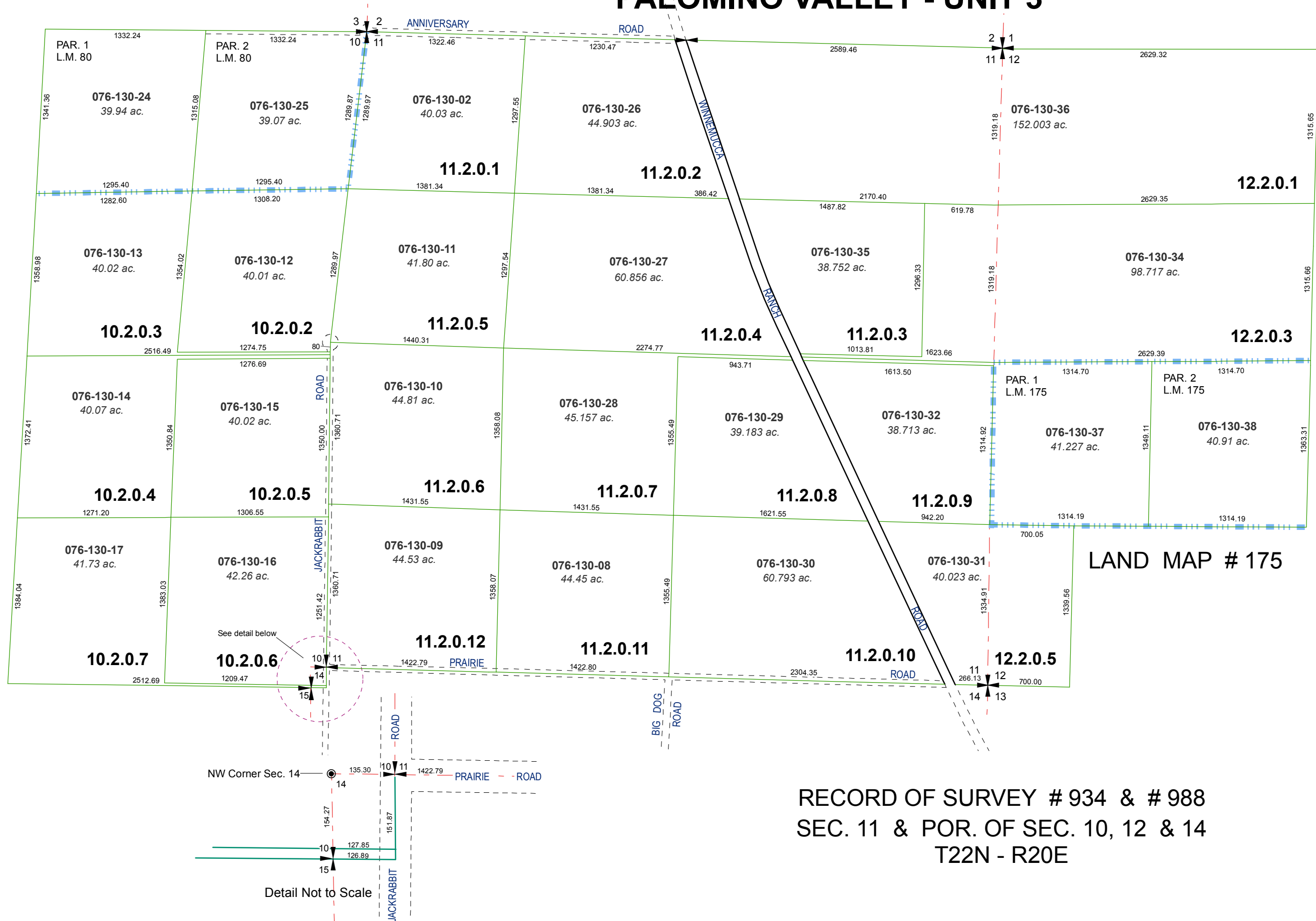


created by: TWT 5/27/2011

last updated: CFB 09/08/2011

area previously shown on map(s)

NOTE: This map was prepared for the use of the Washoe County Assessor for assessment and illustrative purposes only. It does not represent a survey of the premises. No liability is assumed as to the sufficiency or accuracy of the data delineated hereon.



RECORD OF SURVEY # 934 & # 988
SEC. 11 & POR. OF SEC. 10, 12 & 14
T22N - R20E