

(#160)
FLANIGAN TOWNSITE
 PORTION OF NW 1/4 OF SEC. 31
 T27N - R19E

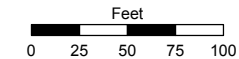
Assessor's Map Number

074-35

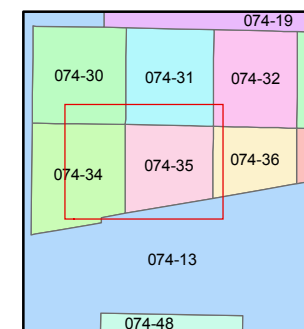
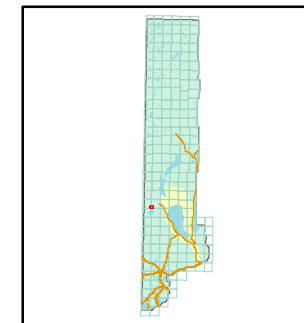
STATE OF NEVADA
WASHOE COUNTY
ASSESSOR'S OFFICE

Joshua G. Wilson, Assessor

1001 East Ninth Street
 Building D
 Reno, Nevada 89512
 (775) 328-2231



1 inch = 100 feet

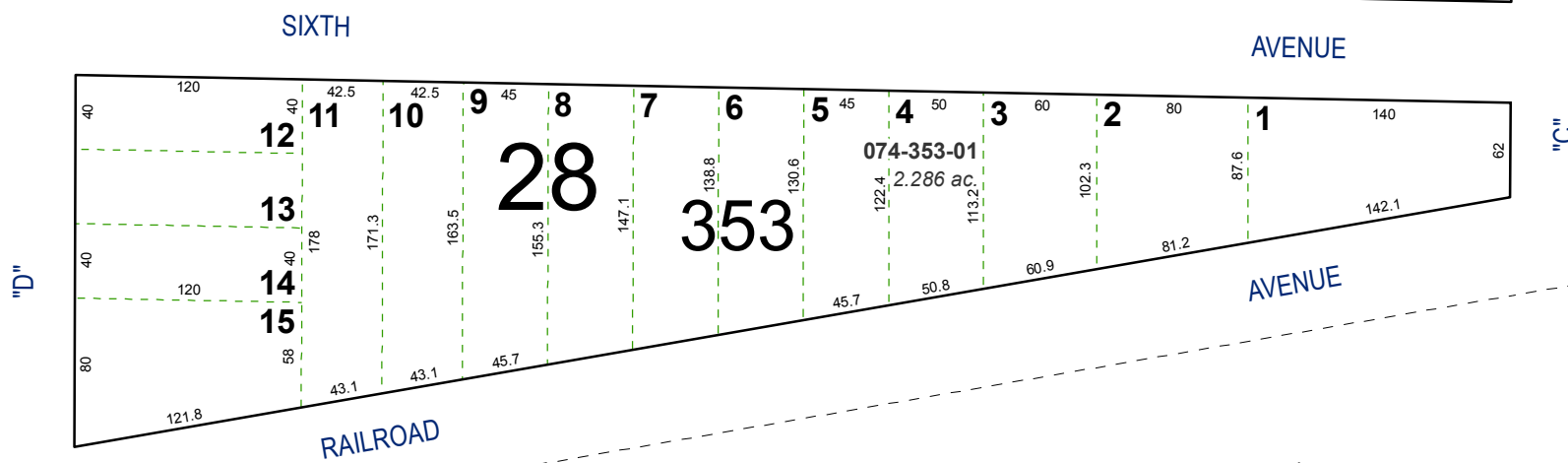
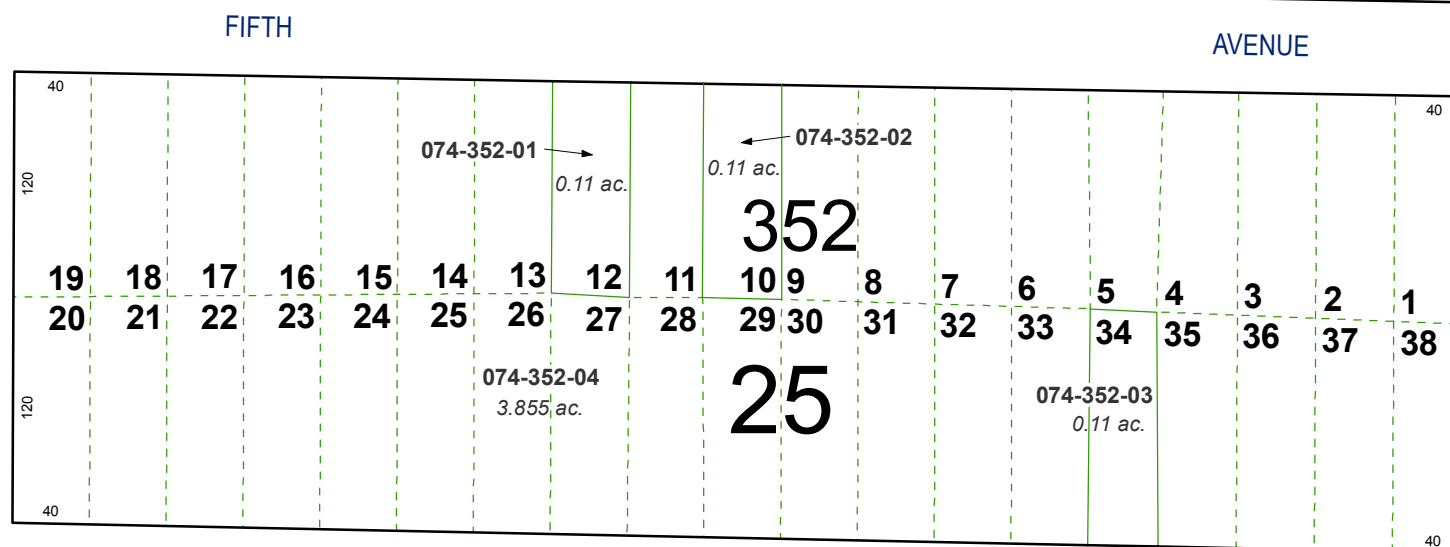
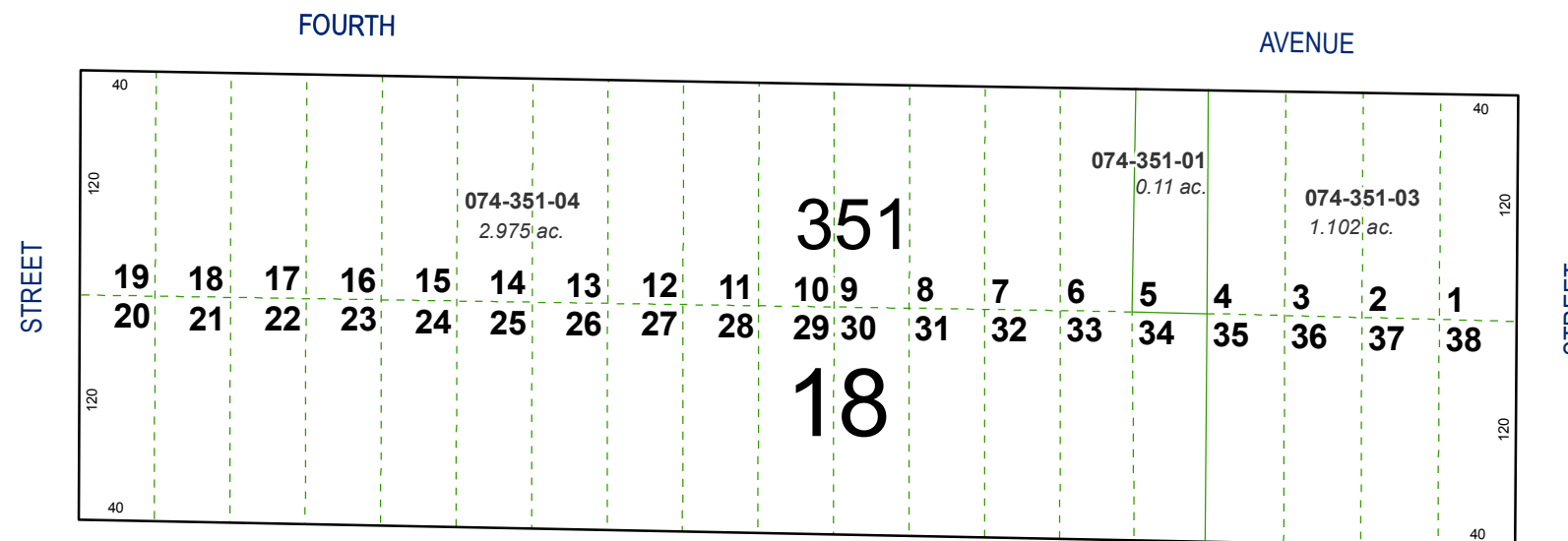


created by: TWT 1/5/2011

last updated: _____

area previously shown on map(s) _____

NOTE: This map was prepared for the use of the Washoe County Assessor for assessment and illustrative purposes only. It does not represent a survey of the premises. No liability is assumed as to the sufficiency or accuracy of the data delineated hereon.



UNION PACIFIC RAILROAD (MAIN LINE)