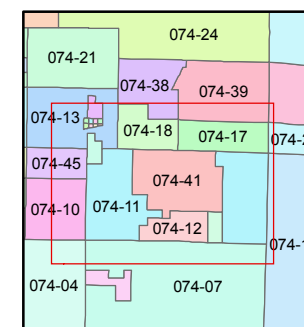
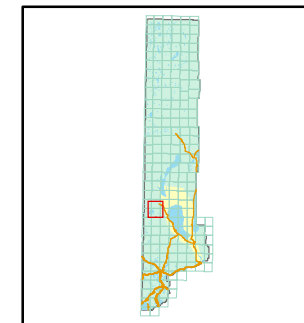


1 inch = 2,640 feet

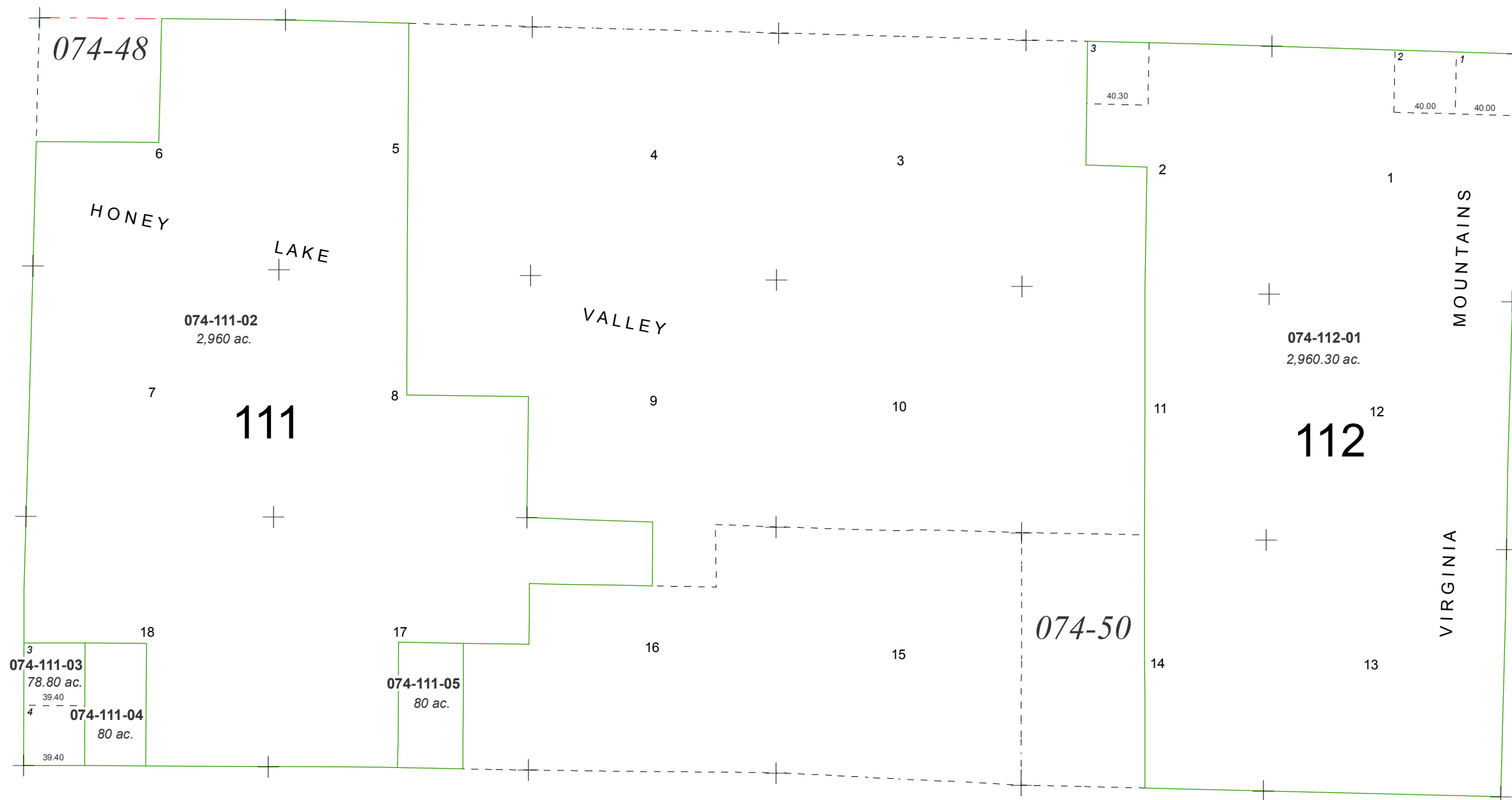


created by: TWT 1/7/2011

last updated: _____

area previously shown on map(s)

ALL OF SEC'S. 1, 7, 12, 13 & 18 AND POR'S. OF SEC'S. 2, 5, 6, 8, 11, 14, 16 & 17 T26N - R19E



NOTE: This map was prepared for the use of the Washoe County Assessor for assessment and illustrative purposes only. It does not represent a survey of the premises. No liability is assumed as to the sufficiency or accuracy of the data delineated hereon.