

Assessor's Map Number

**071-36**

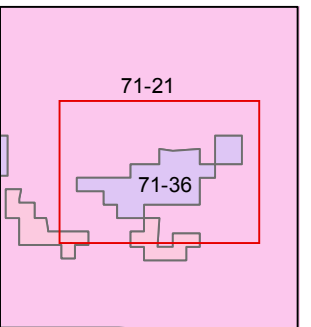
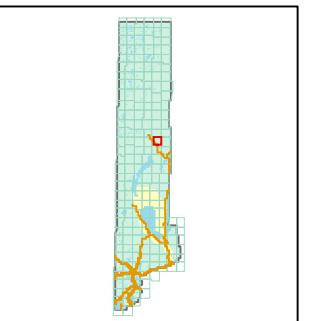
STATE OF NEVADA  
**WASHOE COUNTY**  
**ASSESSOR'S OFFICE**  
Joshua G. Wilson, Assessor

1001 East Ninth Street  
Building D  
Reno, Nevada 89512  
(775) 328-2231



0 162 325 650 975 1,300 Feet

1 inch = 1,320 feet

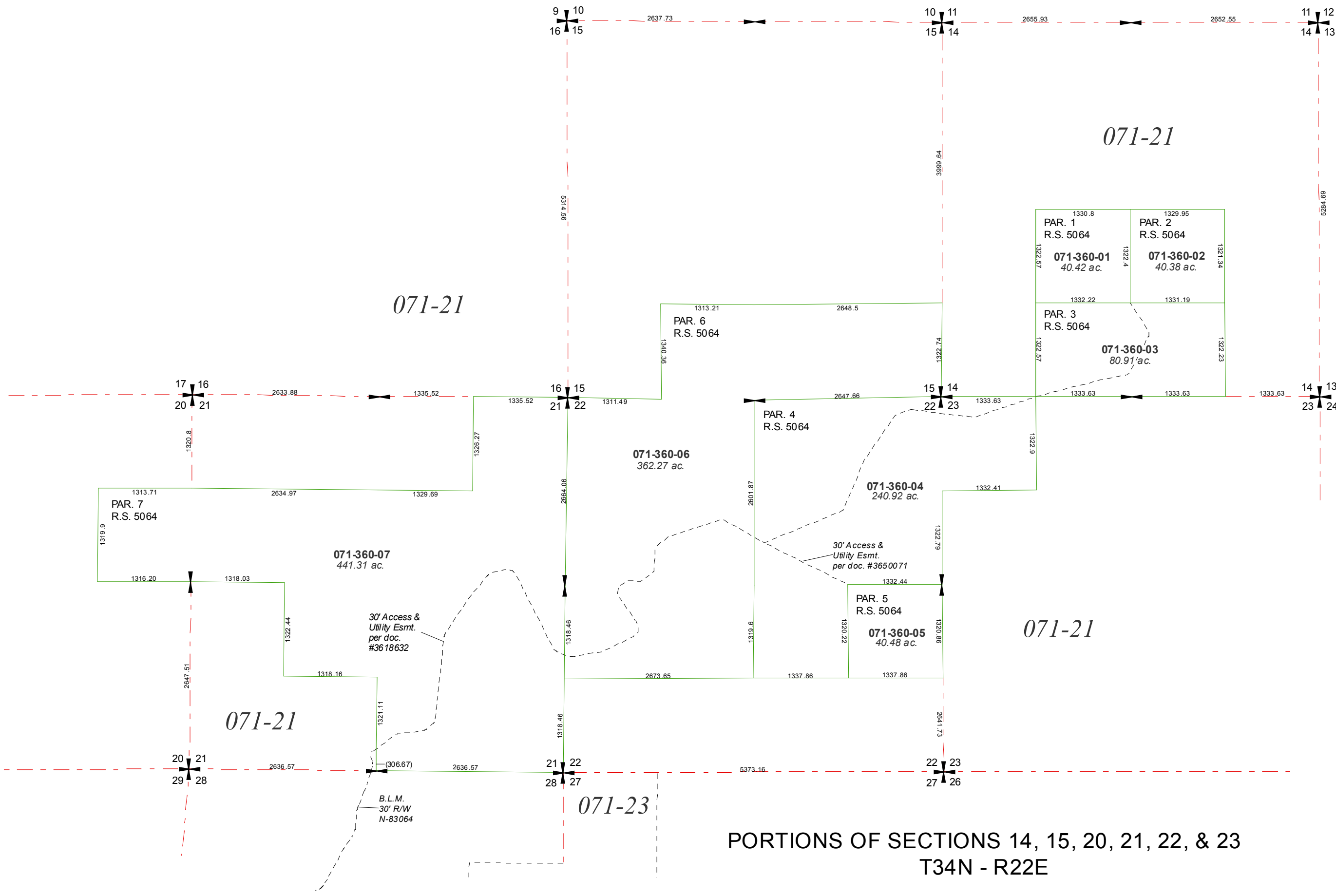


created by: NLH 5/8/2009

last updated: \_\_\_\_\_

area previously shown on map(s)

NOTE: This map was prepared for the use of the Washoe County Assessor for assessment and illustrative purposes only. It does not represent a survey of the premises. No liability is assumed as to the sufficiency or accuracy of the data delineated herein.



**PORTIONS OF SECTIONS 14, 15, 20, 21, 22, & 23  
T34N - R22E**