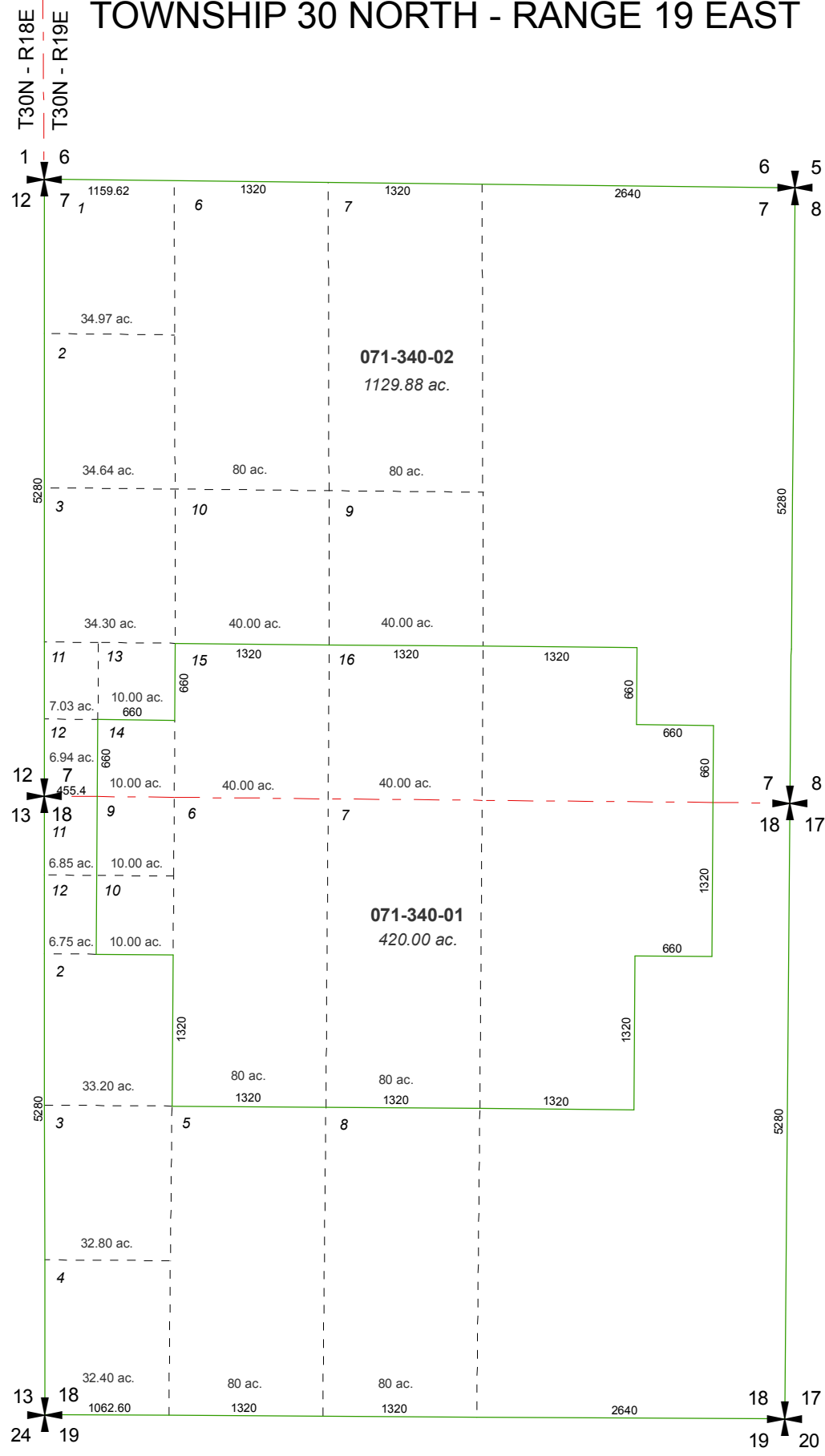


SECTIONS 7 AND 18  
TOWNSHIP 30 NORTH - RANGE 19 EAST

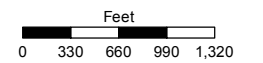


Basis of Bearings: 1996 BLM plat, a subdivision of original lots 4, 5 & 8, sec. 7 and original lot 1, sec. 18, T30N - R19E (from original 1881 BLM survey)

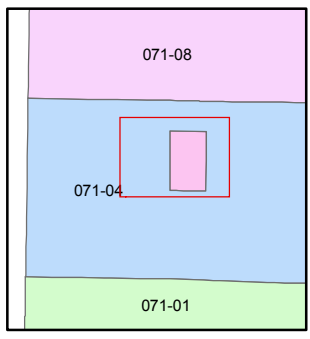
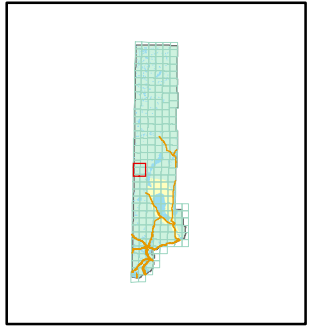
Assessor's Map Number  
**071-34**

STATE OF NEVADA  
**WASHOE COUNTY**  
ASSESSOR'S OFFICE  
Joshua G. Wilson, Assessor

1001 East Ninth Street  
Building D  
Reno, Nevada 89512  
(775) 328-2231



1 inch = 1,320 feet



created by: TWT 6/23/2010

last updated: \_\_\_\_\_

area previously shown on map(s)  
071-04

NOTE: This map was prepared for the use of the Washoe County Assessor for assessment and illustrative purposes only. It does not represent a survey of the premises. No liability is assumed as to the sufficiency or accuracy of the data delineated hereon.