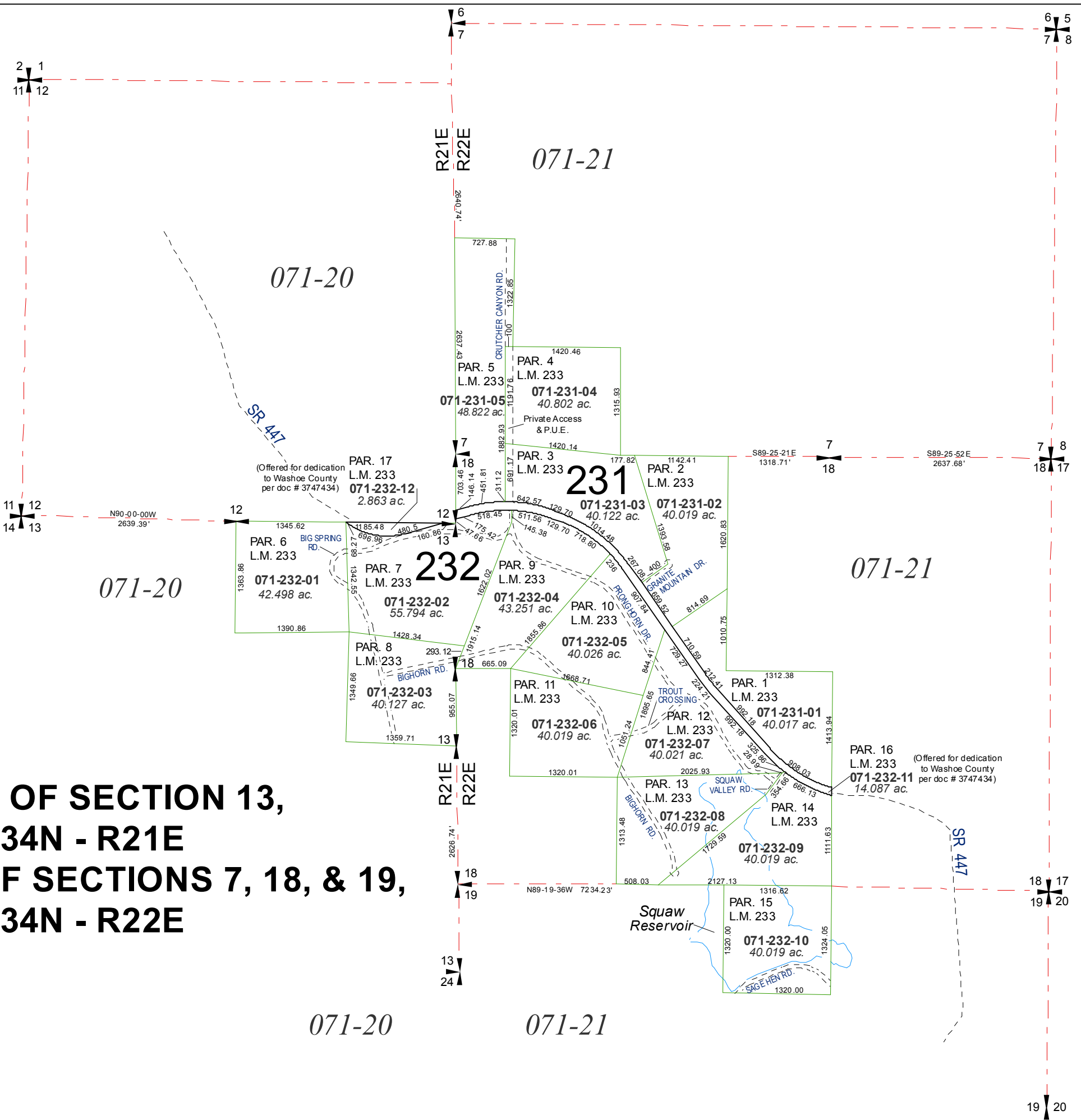


**A POR. OF SECTION 13,
T34N - R21E
AND A POR. OF SECTIONS 7, 18, & 19,
T34N - R22E**

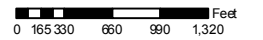


Assessor's Map Number

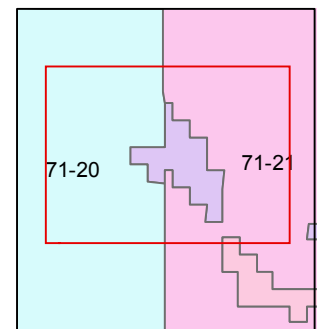
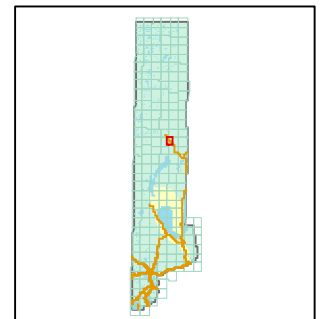
071-23

STATE OF NEVADA
WASHOE COUNTY
ASSESSOR'S OFFICE
Joshua G. Wilson, Assessor

1001 East Ninth Street
Building D
Reno, Nevada 89512
(775) 328-2231



1 inch = 1,320 feet



created by: NLH 5/8/2009

last updated: _____

area previously shown on map(s)

NOTE: This map was prepared for the use of the Washoe County Assessor for assessment and illustrative purposes only. It does not represent a survey of the premises. No liability is assumed as to the sufficiency or accuracy of the data delineated herein.