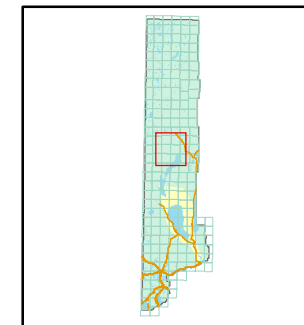


1 inch = 5,280 feet



066-01	066-02	066-03
071-19	071-20	071-21
071-16	071-17	071-18
071-13	071-14	071-15
071-08	071-09	071-10



created by: TWT 6/28/2010

last updated: TWT 11/1/2010

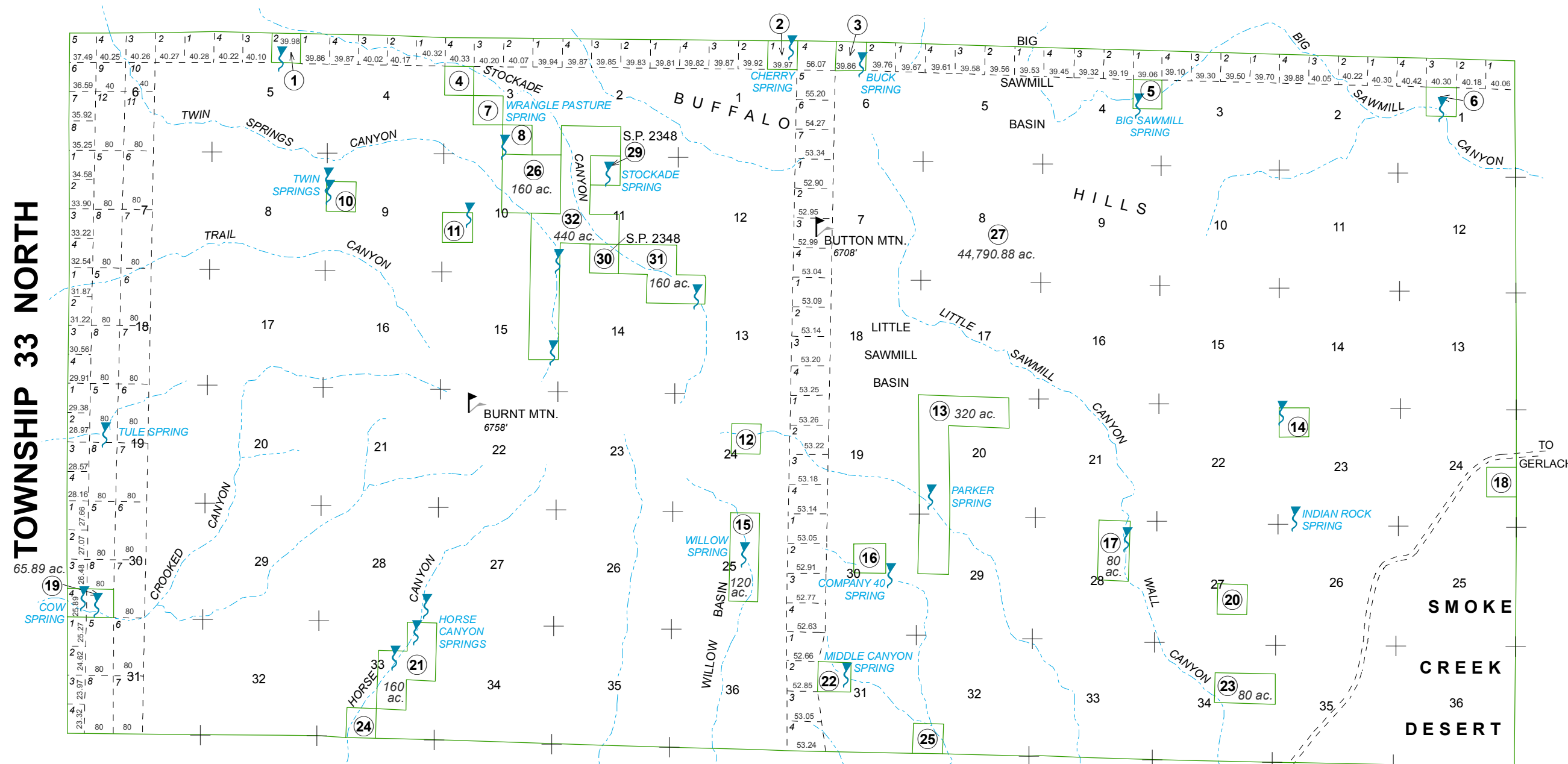
area previously shown on map(s)

NOTE: This map was prepared for the use of the Washoe County Assessor for assessment and illustrative purposes only. It does not represent a survey of the premises. No liability is assumed as to the sufficiency or accuracy of the data delineated hereon.

# RANGE 20 EAST

# RANGE 21 EAST

# TOWNSHIP 33 NORTH



F.P. = Federal Land Patent  
S.P. = State (Nevada) Land Patent

TO FLANIGAN  
NOTE: All unmarked 1/4 1/4 sec. parcels are 40 ac.