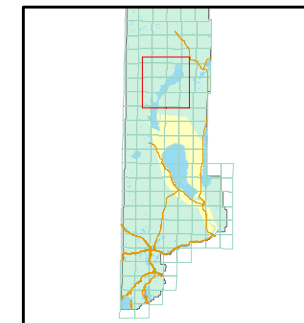


1 inch = 5,280 feet



|        |        |        |
|--------|--------|--------|
| 071-16 | 071-17 | 071-18 |
| 071-13 | 071-14 | 071-15 |
| 071-08 | 071-09 | 071-10 |
| 071-04 | 071-05 | 071-06 |



created by: TWT 11/24/2009

last updated: CFB 04/08/2011

area previously shown on map(s)

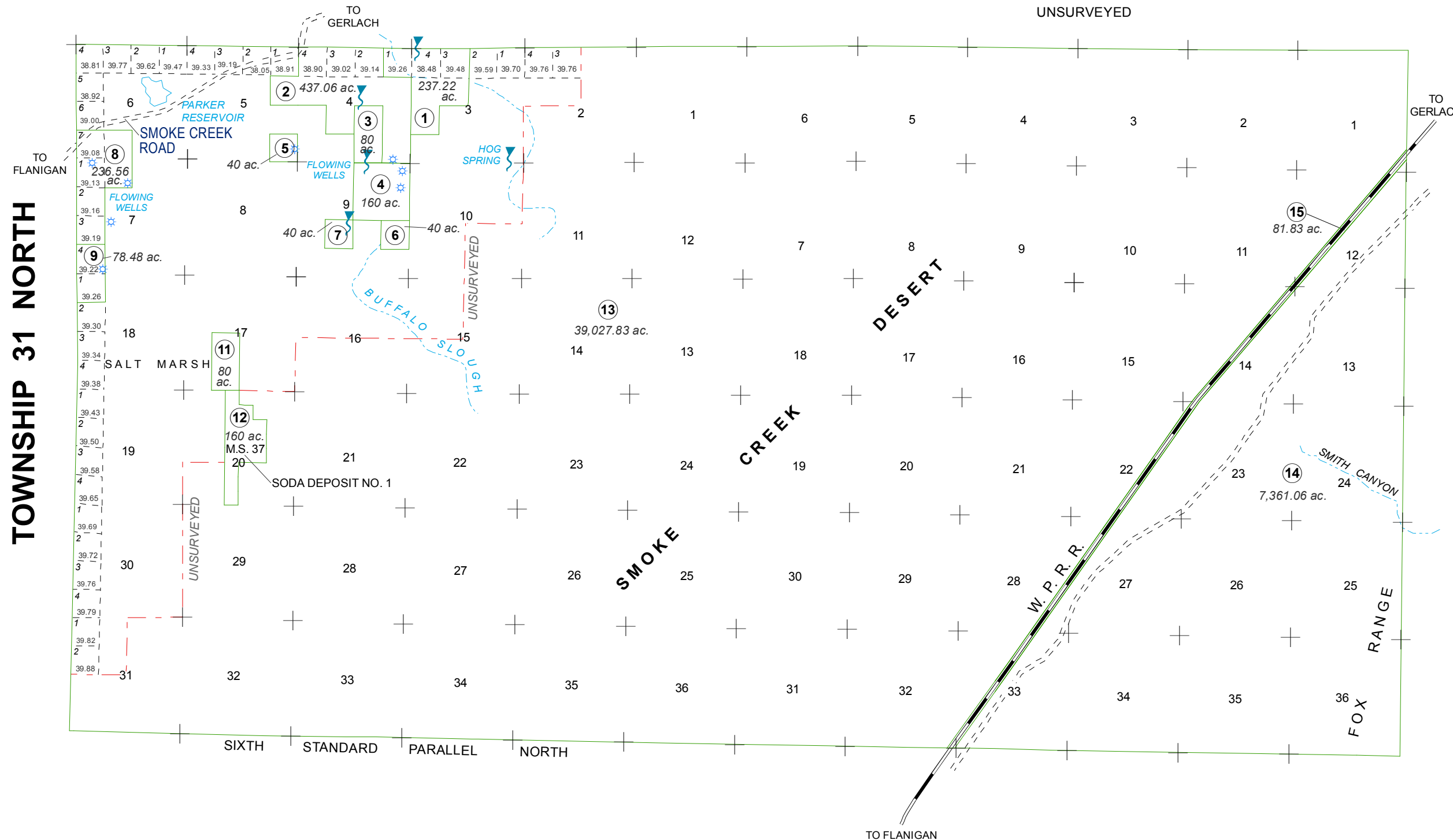
071-15

NOTE: This map was prepared for the use of the Washoe County Assessor for assessment and illustrative purposes only. It does not represent a survey of the premises. No liability is assumed as to the sufficiency or accuracy of the data delineated hereon.

# RANGE 20 EAST

# RANGE 21 EAST

UNSURVEYED



**TOWNSHIP 31 NORTH**

SIXTH STANDARD PARALLEL NORTH

TO FLANIGAN

FOX RANGE

SMOKE CREEK

DESERT

SMOKE CREEK ROAD

PARKER RESERVOIR

HOG SPRING

BUFFALO SLOUGH

SMITH CANYON

W. P. R. R.

SODA DEPOSIT NO. 1

SALT MARSH

TO GERLACH

TO GERLACH

TO FLANIGAN