

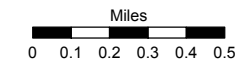
PATENTED MINING CLAIMS

**PORTIONS OF SECTIONS 4, 5, 8, 9, 16, 17, 20 & 21
TOWNSHIP 29 NORTH - RANGE 23 EAST**

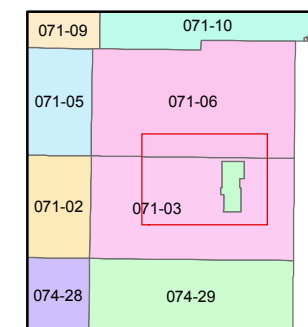
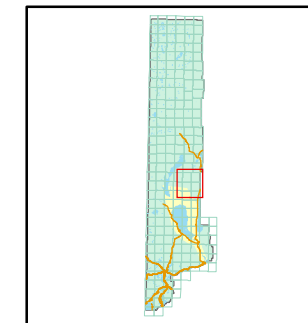
STATE OF NEVADA
**WASHOE COUNTY
ASSESSOR'S OFFICE**

Joshua G. Wilson, Assessor

1001 East Ninth Street
Building D
Reno, Nevada 89512
(775) 328-2231



1 inch = 2,640 feet



created by: TWT 6/23/2010

last updated: _____

area previously shown on map(s)

NOTE: This map was prepared for the use of the Washoe County Assessor for assessment and illustrative purposes only. It does not represent a survey of the premises. No liability is assumed as to the sufficiency or accuracy of the data delineated hereon.

