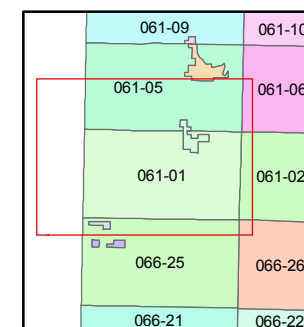
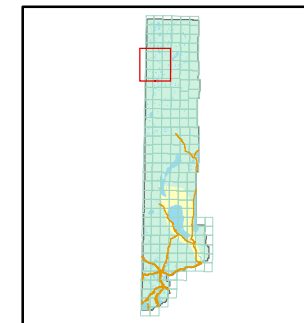


1 inch = 5,280 feet



created by: CFB 01/21/2010

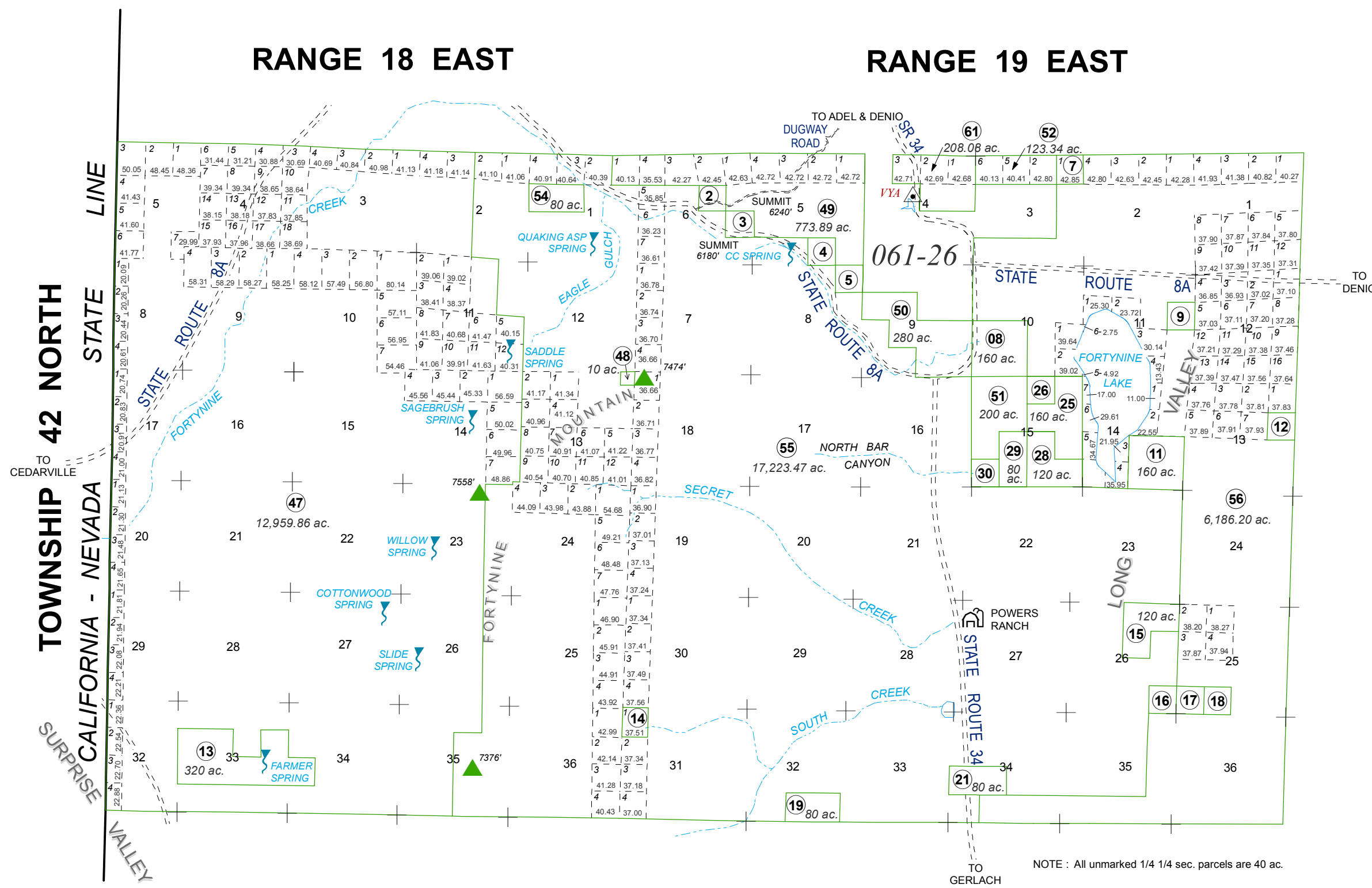
last updated: TWT 06/04/2010

area previously shown on map(s)

NOTE: This map was prepared for the use of the Washoe County Assessor for assessment and illustrative purposes only. It does not represent a survey of the premises. No liability is assumed as to the sufficiency or accuracy of the data delineated hereon.

RANGE 18 EAST

RANGE 19 EAST



NOTE : All unmarked 1/4 1/4 sec. parcels are 40 ac.

TOWNSHIP 42 NORTH  
CALIFORNIA - NEVADA STATE LINE  
SURPRISE VALLEY

TO CEDARVILLE

TO ADEL & DENIO  
DUGWAY ROAD

TO DENIO

TO GERLACH