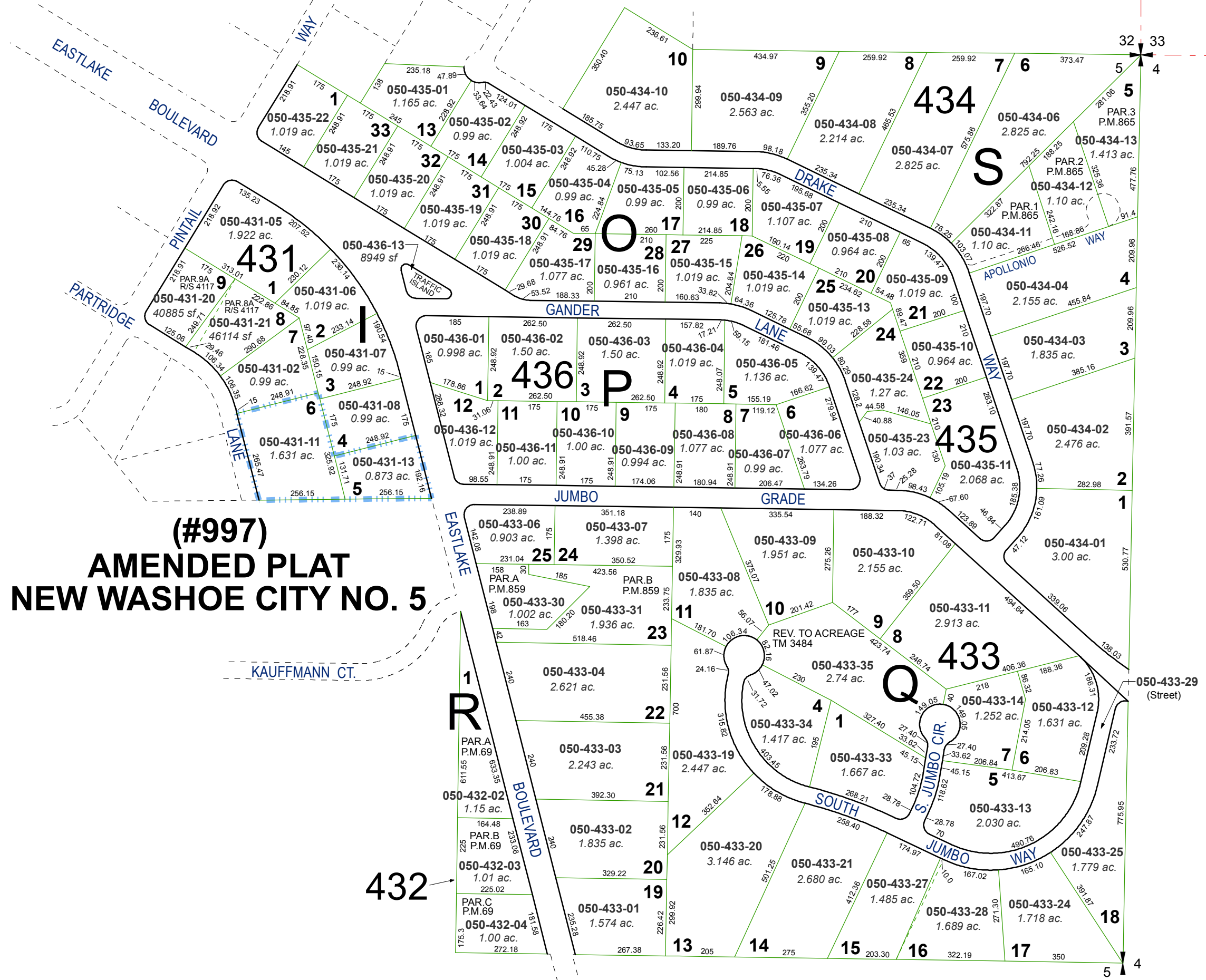


NEW WASHOE CITY SUB. NO. 5 (#974)

POR. OF N 1/2 SECTION 5, T16N - R20E

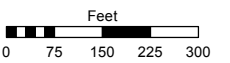


(#997) AMENDED PLAT NEW WASHOE CITY NO. 5

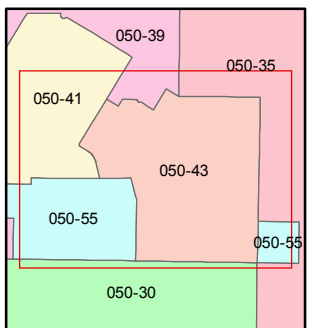
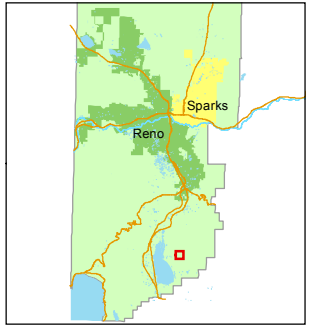
Assessor's Map Number
050-43

STATE OF NEVADA
WASHOE COUNTY
ASSESSOR'S OFFICE
Joshua G. Wilson, Assessor

1001 East Ninth Street
Building D
Reno, Nevada 89512
(775) 328-2231



1 inch = 300 feet



created by: KSB 9/09/10
last updated: CFB 10/07/2014

area previously shown on map(s)

NOTE: This map was prepared for the use of the Washoe County Assessor for assessment and illustrative purposes only. It does not represent a survey of the premises. No liability is assumed as to the sufficiency or accuracy of the data delineated hereon.