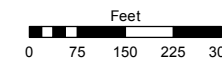
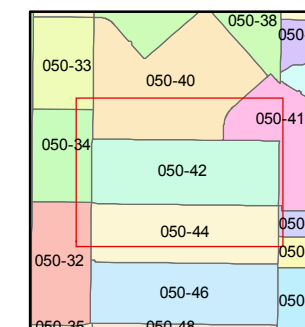
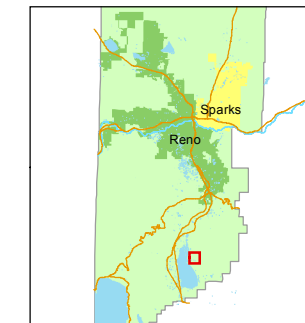


STATE OF NEVADA
WASHOE COUNTY
ASSESSOR'S OFFICE
Michael E. Clark, Assessor

1001 East Ninth Street
Building D
Reno, Nevada 89512
(775) 328-2231



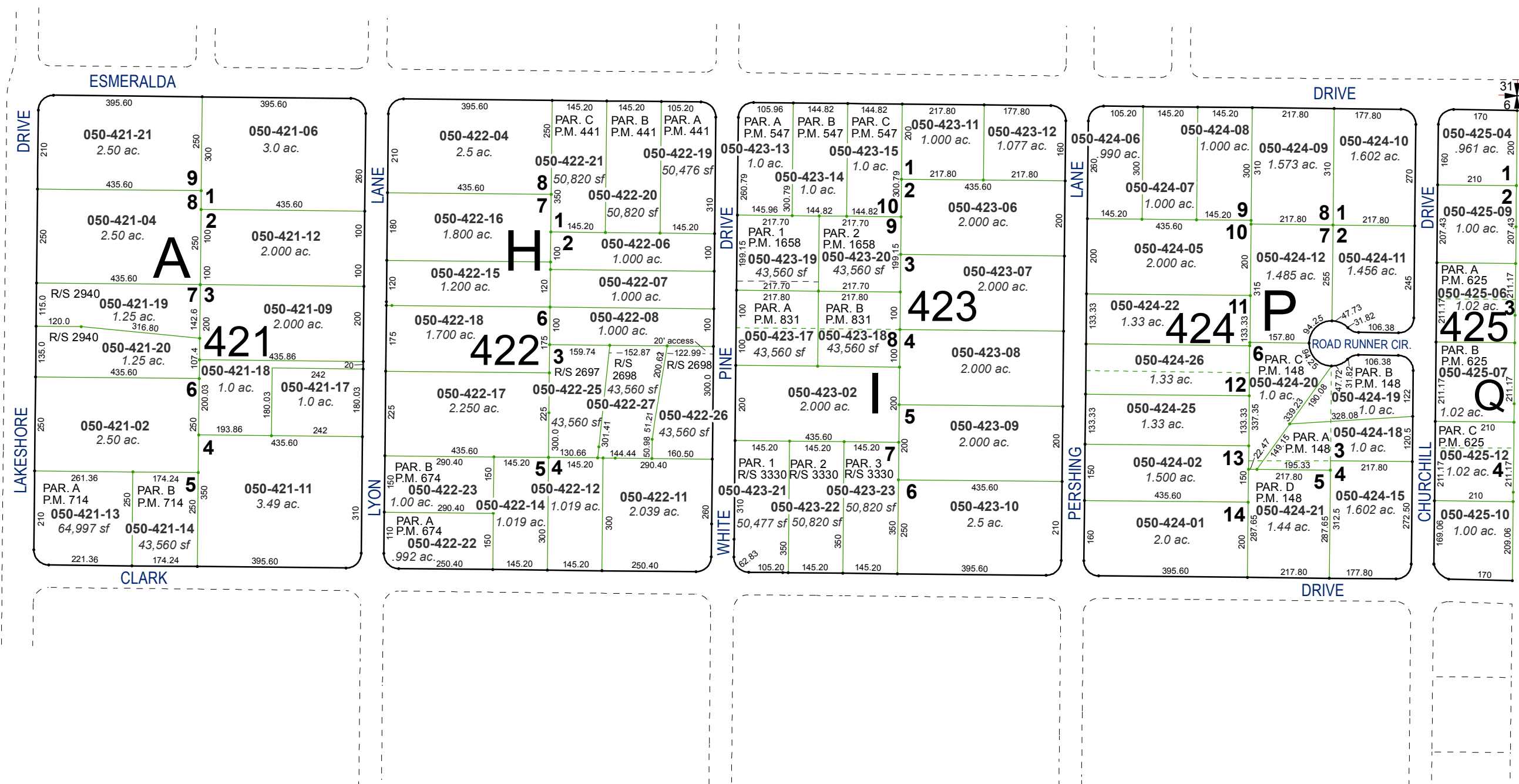
1 inch = 300 feet



created by: TWT 1/14/2010
last updated: CFB 3/25/11 KSB 3/13/15
area previously shown on map(s)

NOTE: This map was prepared for the use of the Washoe County Assessor for assessment and illustrative purposes only. It does not represent a survey of the premises. No liability is assumed as to the sufficiency or accuracy of the data delineated hereon.

(#572)
WASHOE VALLEY FARMS
PORTION OF SEC. 6, T16N - R20E



31 32
6 5