

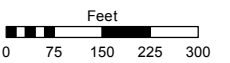
WASHOE TERRACE SUB. BLOCKS A & B (#340)

PTN. SW 1/4 SEC. 24
T17N - R19E

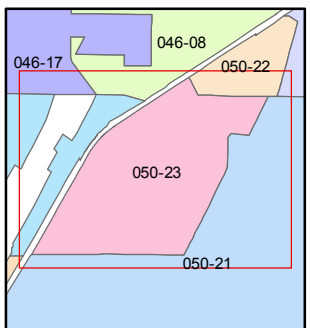
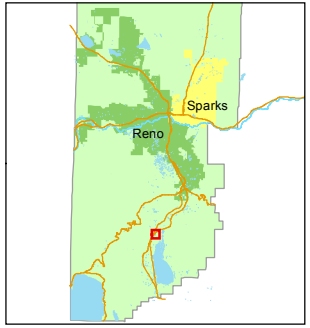
Assessor's Map Number
050-23

STATE OF NEVADA
WASHOE COUNTY
ASSESSOR'S OFFICE
Michael E. Clark, Assessor

1001 East Ninth Street
Building D
Reno, Nevada 89512
(775) 328-2231



1 inch = 300 feet

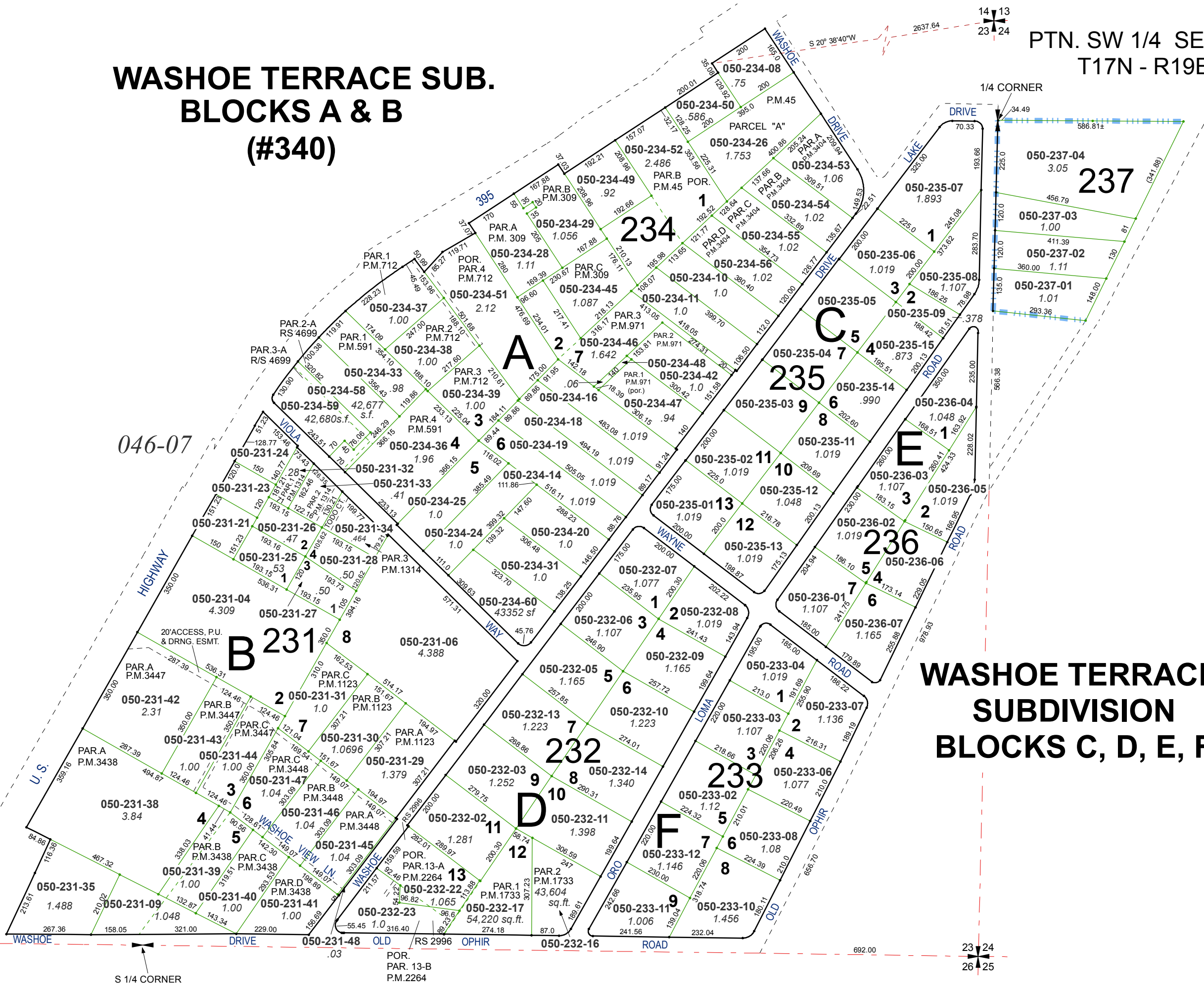


created by: CFB 07/08/2010

last updated: CFB 04/27/2015

area previously shown on map(s)

NOTE: This map was prepared for the use of the Washoe County Assessor for assessment and illustrative purposes only. It does not represent a survey of the premises. No liability is assumed as to the sufficiency or accuracy of the data delineated hereon.



WASHOE TERRACE SUBDIVISION BLOCKS C, D, E, F

23 24
26 25

WASHOE DRIVE
S 1/4 CORNER