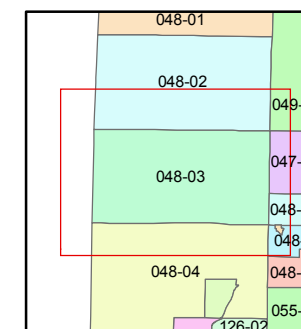
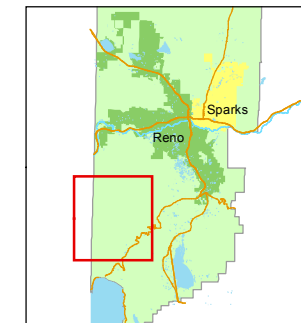


1 inch = 2,640 feet



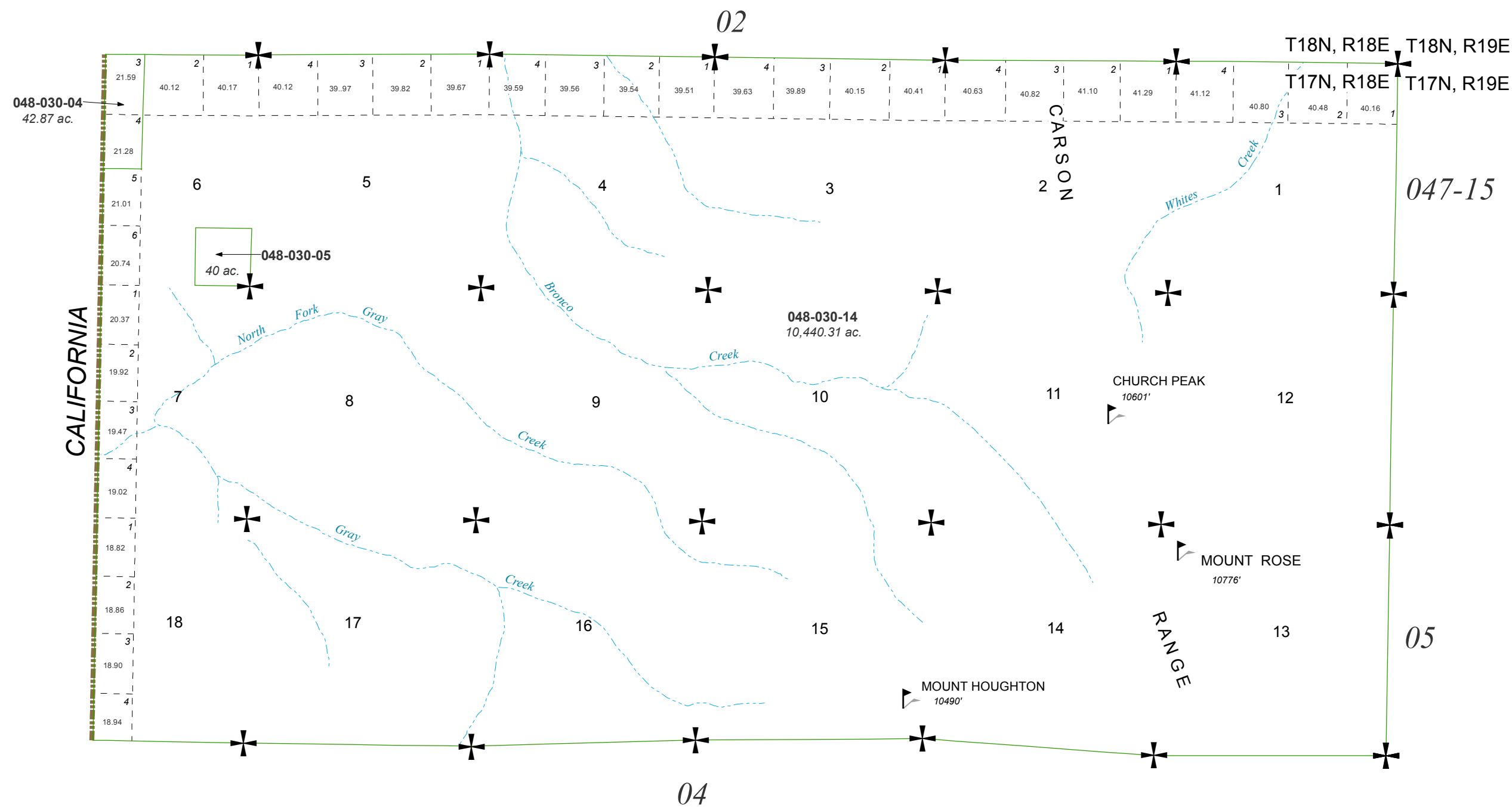
created by: CFB 03/28/2012

last updated: \_\_\_\_\_

area previously shown on map(s)  
\_\_\_\_\_

NOTE: This map was prepared for the use of the Washoe County Assessor for assessment and illustrative purposes only. It does not represent a survey of the premises. No liability is assumed as to the sufficiency or accuracy of the data delineated hereon.

NORTH 1/2 OF T17N - R18E



CALIFORNIA

CARSON

RANGE

02

047-15

05

04

048-030-04  
42.87 ac.

048-030-05  
40 ac.

048-030-14  
10,440.31 ac.

CHURCH PEAK  
10601'

MOUNT ROSE  
10776'

MOUNT HOUGHTON  
10490'

T18N, R18E T18N, R19E  
T17N, R18E T17N, R19E