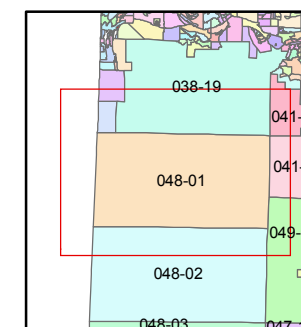
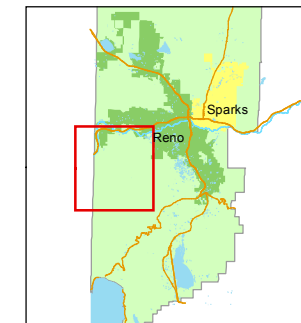


1 inch = 2,640 feet



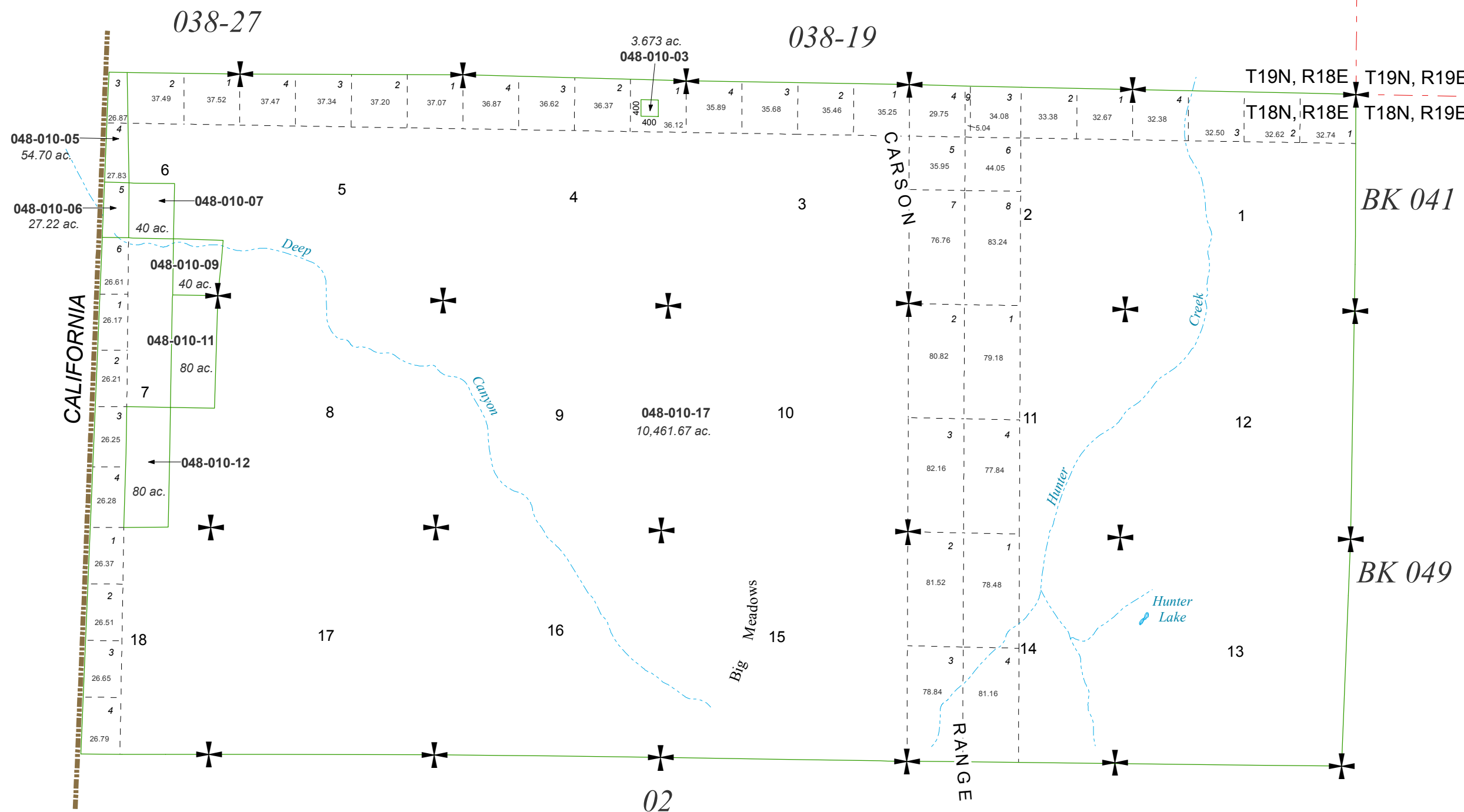
created by: CFB 03/27/2012

last updated: _____

area previously shown on map(s)

NOTE: This map was prepared for the use of the Washoe County Assessor for assessment and illustrative purposes only. It does not represent a survey of the premises. No liability is assumed as to the sufficiency or accuracy of the data delineated hereon.

NORTH 1/2 OF T18N - R18E



BK 041

BK 049

02