

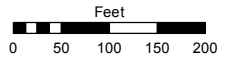
PORTION OF THE SOUTHEAST 1/4 OF SECTION 3
T17N - R19E

Assessor's Map Number

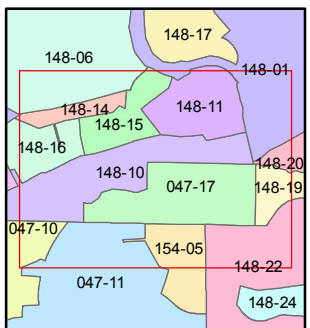
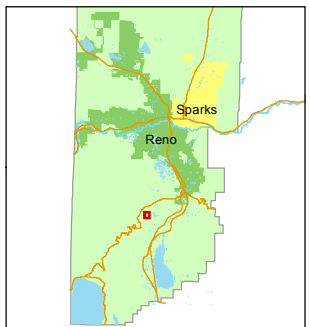
047-17

STATE OF NEVADA
WASHOE COUNTY
ASSESSOR'S OFFICE
Michael E. Clark, Assessor

1001 East Ninth Street
Building D
Reno, Nevada 89512
(775) 328-2231



1 inch = 200 feet



created by: KSB 7/01/2010

last updated: KSB 5/21/15

area previously shown on map(s)

047-04

NOTE: This map was prepared for the use of the Washoe County Assessor for assessment and illustrative purposes only. It does not represent a survey of the premises. No liability is assumed as to the sufficiency or accuracy of the data delineated herein.

