

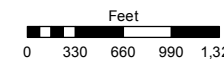
SECTIONS 4, 5, 6, 7 & 8  
T17N - R19E

Assessor's Map Number

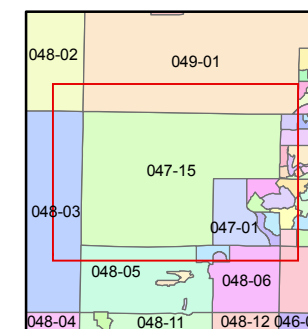
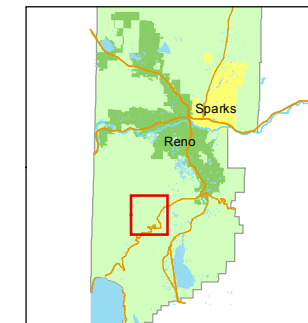
**047-15**

STATE OF NEVADA  
**WASHOE COUNTY**  
ASSESSOR'S OFFICE  
Joshua G. Wilson, Assessor

1001 East Ninth Street  
Building D  
Reno, Nevada 89512  
(775) 328-2231



1 inch = 1,320 feet



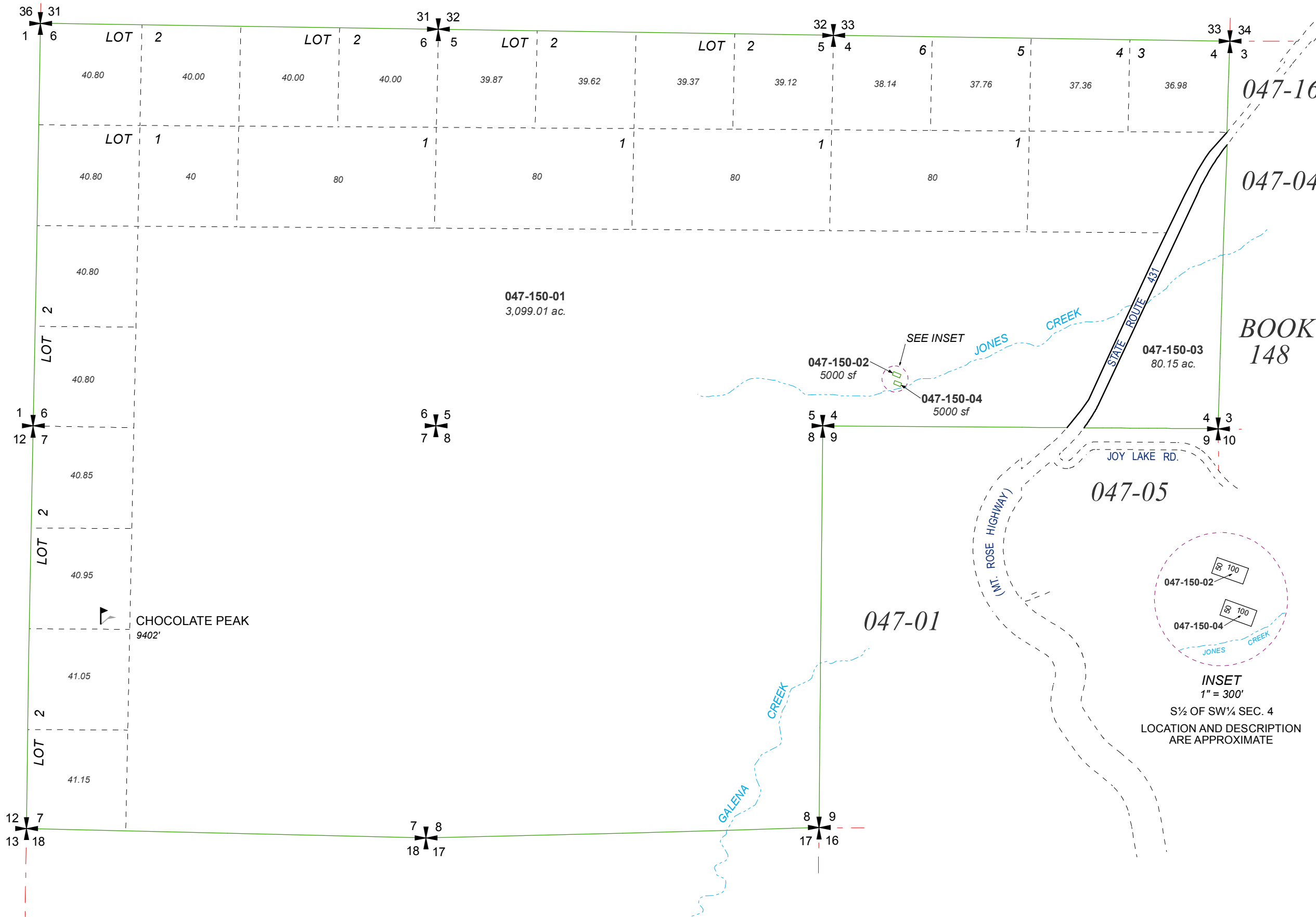
created by: KSB 4/09/2012

last updated: \_\_\_\_\_

area previously shown on map(s)

045-25

NOTE: This map was prepared for the use of the Washoe County Assessor for assessment and illustrative purposes only. It does not represent a survey of the premises. No liability is assumed as to the sufficiency or accuracy of the data delineated hereon.



**INSET**  
1" = 300'  
S½ OF SW¼ SEC. 4  
LOCATION AND DESCRIPTION  
ARE APPROXIMATE