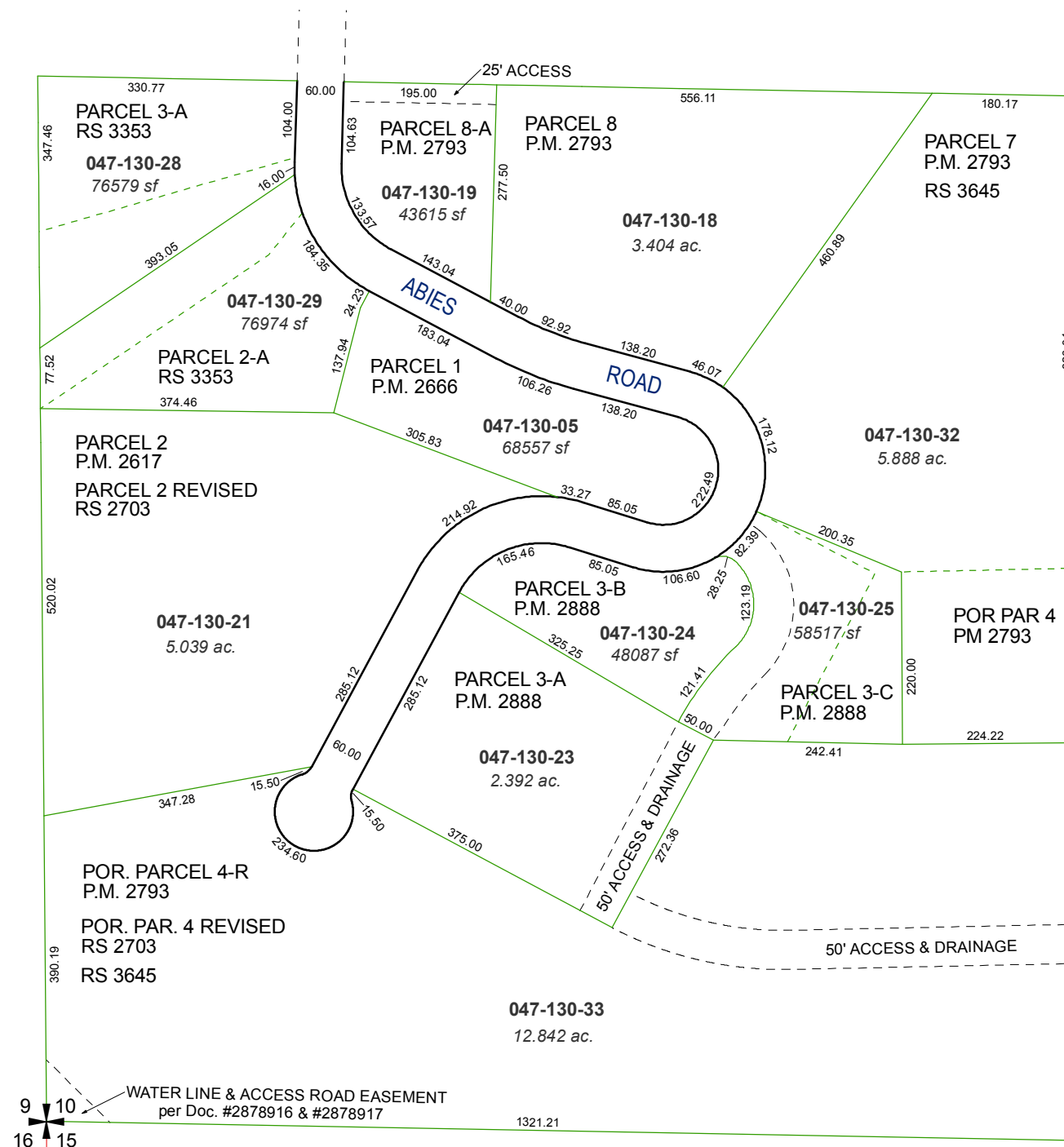


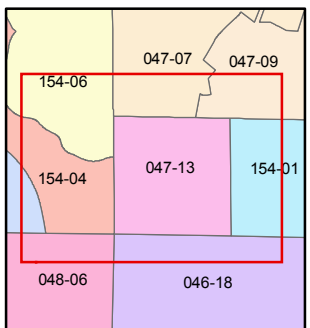
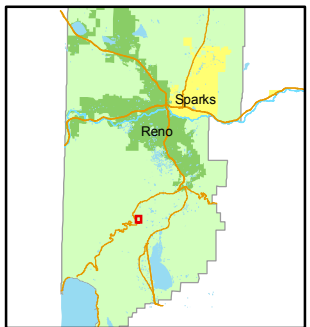
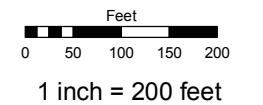
THE SW 1/4 OF THE SW 1/4 OF SECTION 10, T17N - R19E



Assessor's Map Number  
**047-13**

STATE OF NEVADA  
**WASHOE COUNTY**  
**ASSESSOR'S OFFICE**  
Joshua G. Wilson, Assessor

1001 East Ninth Street  
Building D  
Reno, Nevada 89512  
(775) 328-2231



created by: KSB 2/01/2010  
last updated: \_\_\_\_\_  
area previously shown on map(s)  
047-01

NOTE: This map was prepared for the use of the Washoe County Assessor for assessment and illustrative purposes only. It does not represent a survey of the premises. No liability is assumed as to the sufficiency or accuracy of the data delineated hereon.