

PORTION OF THE N 1/2 OF SECTION 10  
T17N - R19E

Assessor's Map Number

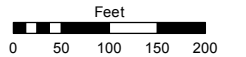
**047-11**

STATE OF NEVADA

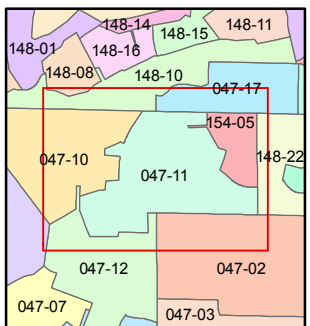
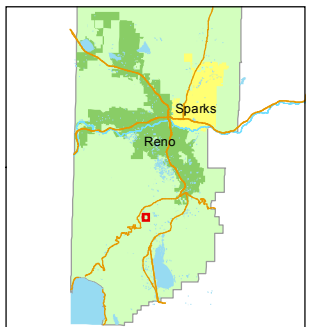
**WASHOE COUNTY  
ASSESSOR'S OFFICE**

Joshua G. Wilson, Assessor

1001 East Ninth Street  
Building D  
Reno, Nevada 89512  
(775) 328-2231



1 inch = 200 feet



created by: KSB 4/05/2012

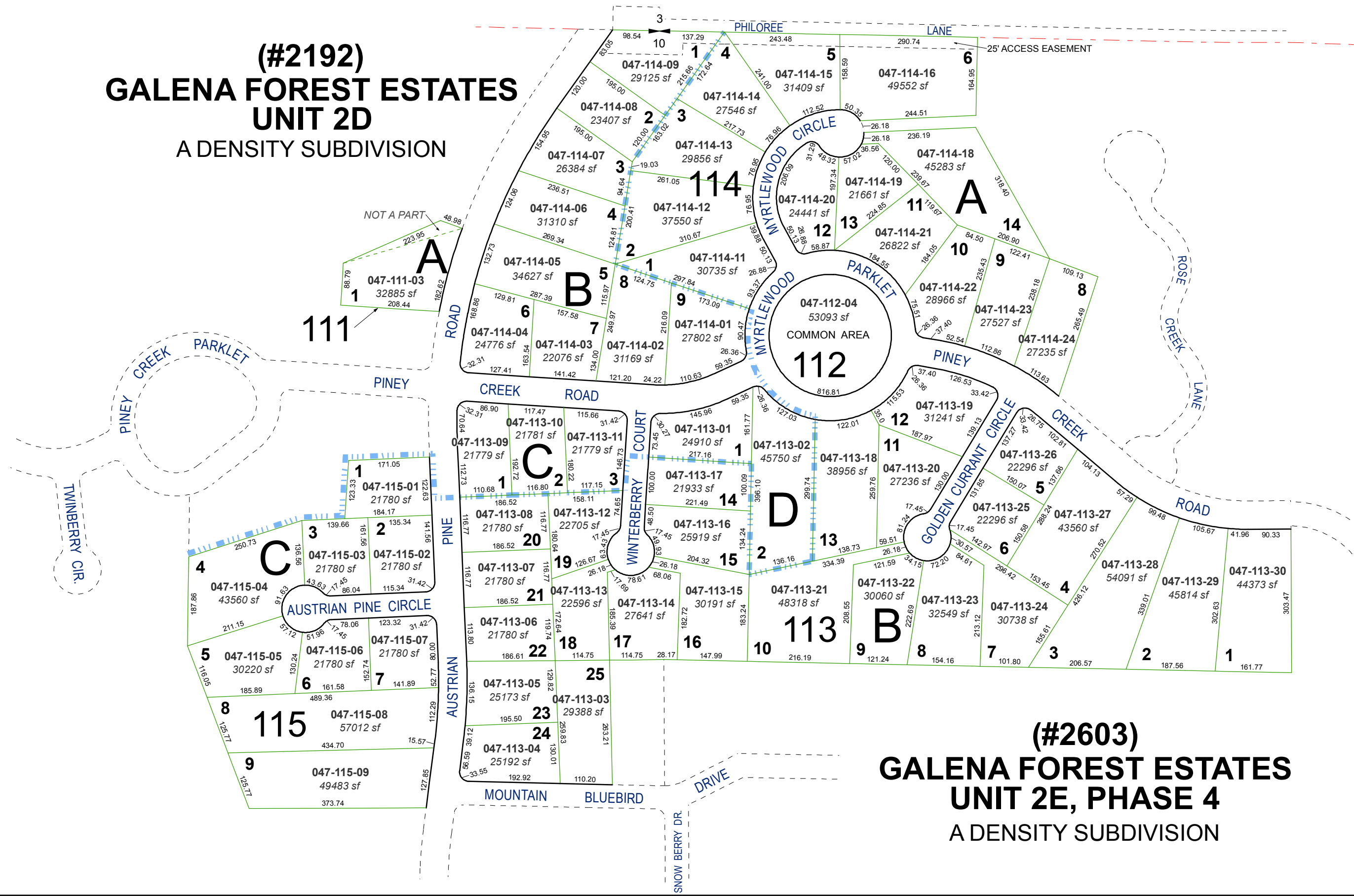
last updated: \_\_\_\_\_

area previously shown on map(s)

047-01

NOTE: This map was prepared for the use of the Washoe County Assessor for assessment and illustrative purposes only. It does not represent a survey of the premises. No liability is assumed as to the sufficiency or accuracy of the data delineated hereon.

**(#2192)  
GALENA FOREST ESTATES  
UNIT 2D  
A DENSITY SUBDIVISION**



**(#2603)  
GALENA FOREST ESTATES  
UNIT 2E, PHASE 4  
A DENSITY SUBDIVISION**