

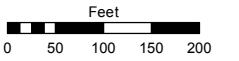
PORTION OF THE NE 1/4 OF SECTION 10
T17N - R19E

Assessor's Map Number

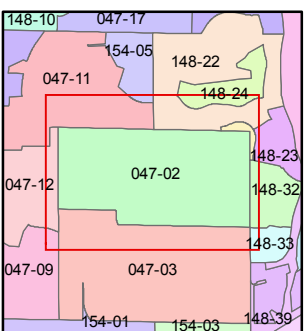
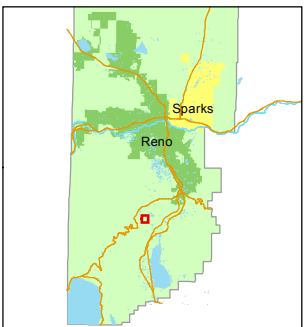
047-02

STATE OF NEVADA
WASHOE COUNTY
ASSESSOR'S OFFICE
Michael E. Clark, Assessor

1001 East Ninth Street
Building D
Reno, Nevada 89512
(775) 328-2231



1 inch = 200 feet



created by: KSB 4/02/2012

last updated: CFB 6/05/13 EMG 2/25/15

area previously shown on map(s)

045-26

NOTE: This map was prepared for the use of the Washoe County Assessor for assessment and illustrative purposes only. It does not represent a survey of the premises. No liability is assumed as to the sufficiency or accuracy of the data delineated hereon.



N00-15-31W
1328.45'

148-31

