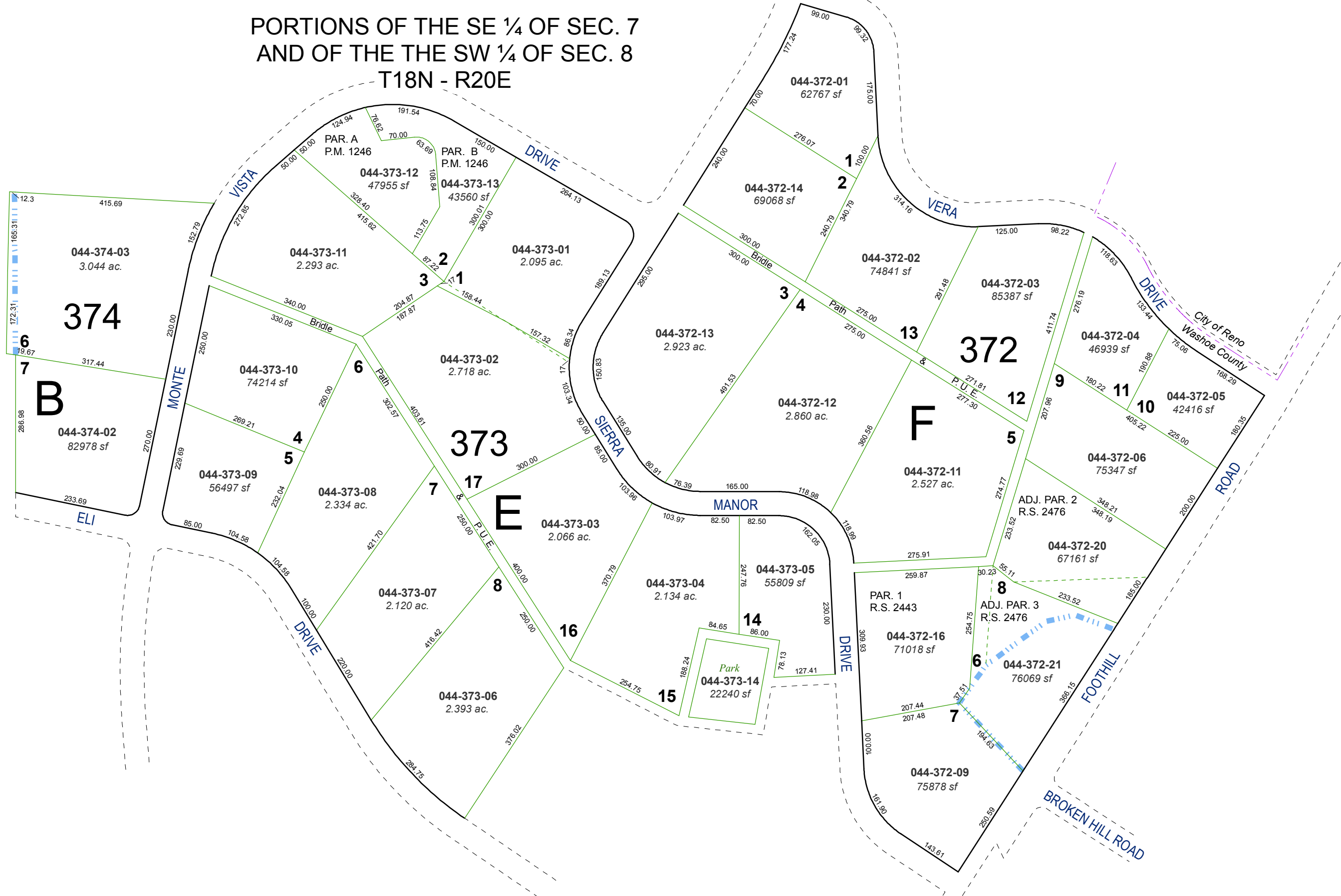


# (#448) AMENDED SIERRA MANOR SUBDIVISION

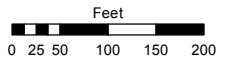
PORTIONS OF THE SE ¼ OF SEC. 7  
AND OF THE THE SW ¼ OF SEC. 8  
T18N - R20E



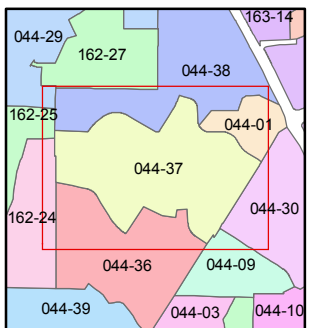
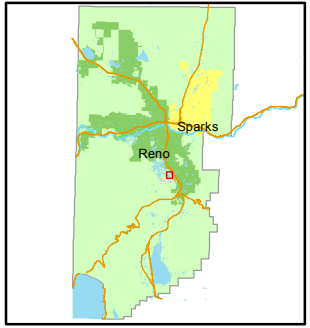
Assessor's Map Number  
**044-37**

STATE OF NEVADA  
**WASHOE COUNTY**  
ASSESSOR'S OFFICE  
Joshua G. Wilson, Assessor

1001 East Ninth Street  
Building D  
Reno, Nevada 89512  
(775) 328-2231



1 inch = 200 feet



created by: NLH 11/01/2011  
last updated: \_\_\_\_\_  
area previously shown on map(s) \_\_\_\_\_

NOTE: This map was prepared for the use of the Washoe County Assessor for assessment and illustrative purposes only. It does not represent a survey of the premises. No liability is assumed as to the sufficiency or accuracy of the data delineated hereon.