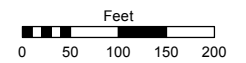


(# 4833)
THE RIDGES AT HUNTER CREEK PHASE 1
 A COMMON INTEREST COMMUNITY
 A POR. OF THE S ½ OF SEC. 19,
 AND A POR. OF THE N ½ OF SEC. 30,
 T19N - R19E

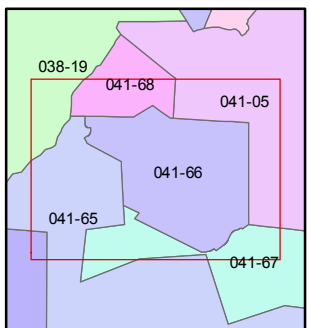
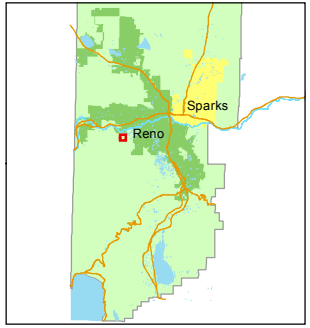
Assessor's Map Number
041-66

STATE OF NEVADA
WASHOE COUNTY
 ASSESSOR'S OFFICE
 Joshua G. Wilson, Assessor

1001 East Ninth Street
 Building D
 Reno, Nevada 89512
 (775) 328-2231



1 inch = 200 feet

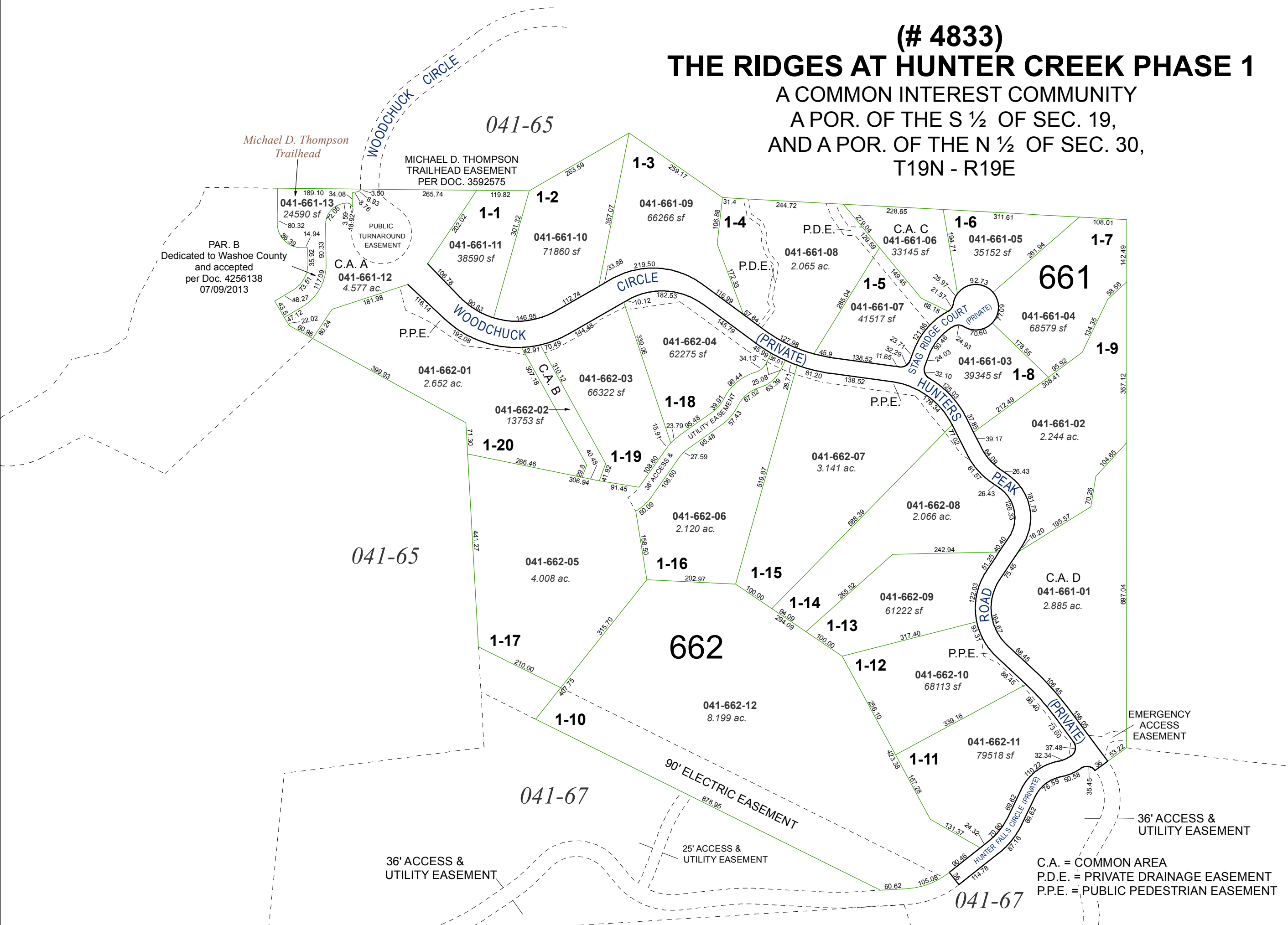


created by: CFB 08/16/2013

last updated: _____

area previously shown on map(s) _____

NOTE: This map was prepared for the use of the Washoe County Assessor for assessment and illustrative purposes only. It does not represent a survey of the premises. No liability is assumed as to the sufficiency or accuracy of the data delineated hereon.



C.A. = COMMON AREA
 P.D.E. = PRIVATE DRAINAGE EASEMENT
 P.P.E. = PUBLIC PEDESTRIAN EASEMENT