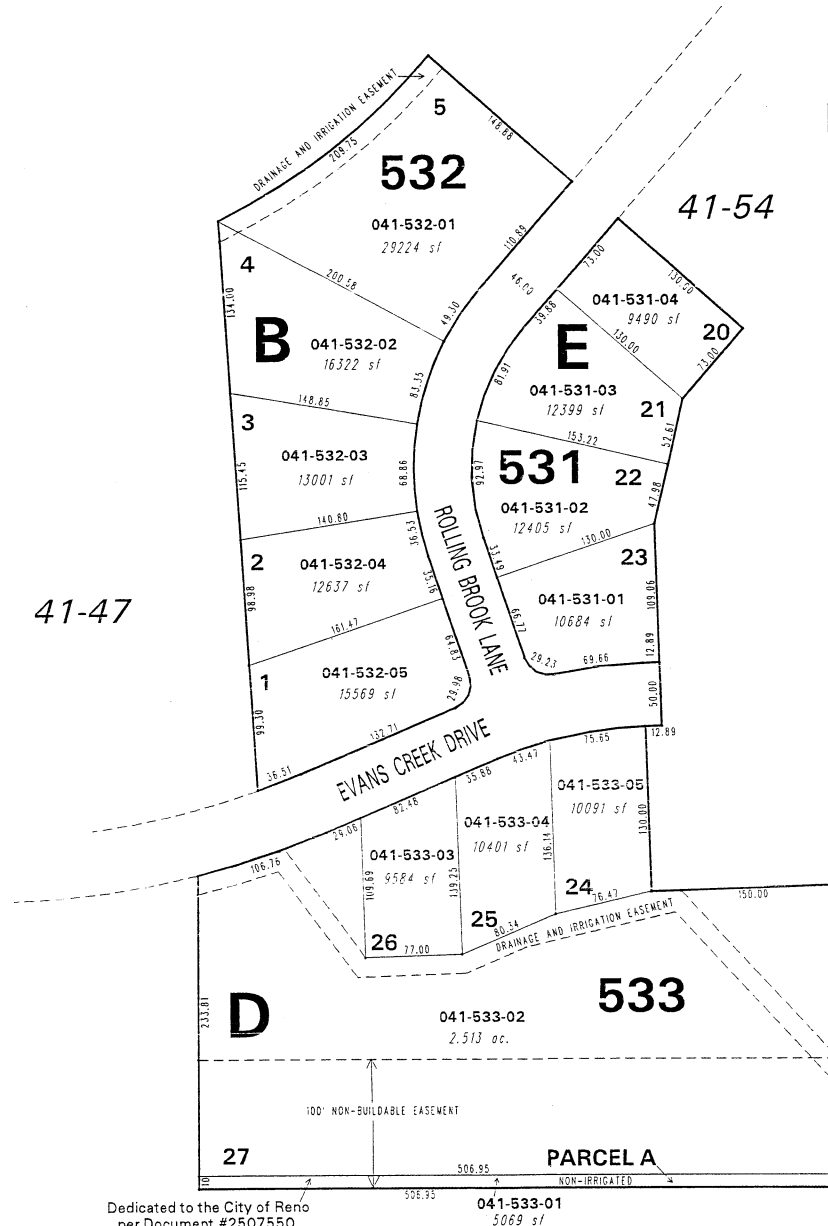


(#2988)

# EVANS CREEK ESTATES UNIT 3

POR. S 1/2 SECTION 35, T.19 N.- R.19 E.



41-54

41-47

BOOK 222-03

BOOK 222-04



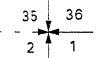
1" = 100'



Dedicated to the City of Reno per Document #2507550

041-533-01  
5069 sf

N89°-58'-16"E, 1366.17



NOTE: This map is prepared for the use of the Washoe County Assessor for assessment and illustrative purposes only. It does not represent a survey of the premises. No liability is assumed as to the sufficiency or the accuracy of the data delineated hereon.

## BOOK 222-06

Office of Washoe County Assessor, Nevada - Robert W. McGowan

This area previously shown on 41-10

NOTE: Areas of parcels which are less than 2 acres are shown in square feet.

Drawn by	M.P. 12/13/93
Revised	12/95 KSB 2/21/01