

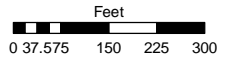
PORTION OF THE N 1/2 OF SECTION 11, T18N - R19E

Assessor's Map Number

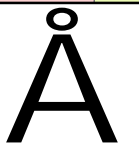
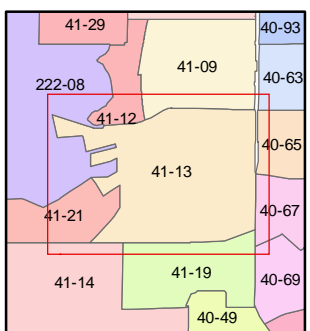
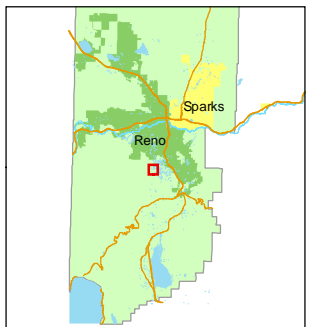
041-13

STATE OF NEVADA
WASHOE COUNTY
ASSESSOR'S OFFICE
 Joshua G. Wilson, Assessor

1001 East Ninth Street
 Building D
 Reno, Nevada 89512
 (775) 328-2231



1 inch = 300 feet



created by: CFB 7/07/2009

last updated: _____

area previously shown on map(s) _____

NOTE: This map was prepared for the use of the Washoe County Assessor for assessment and illustrative purposes only. It does not represent a survey of the premises. No liability is assumed as to the sufficiency or accuracy of the data delineated hereon.

