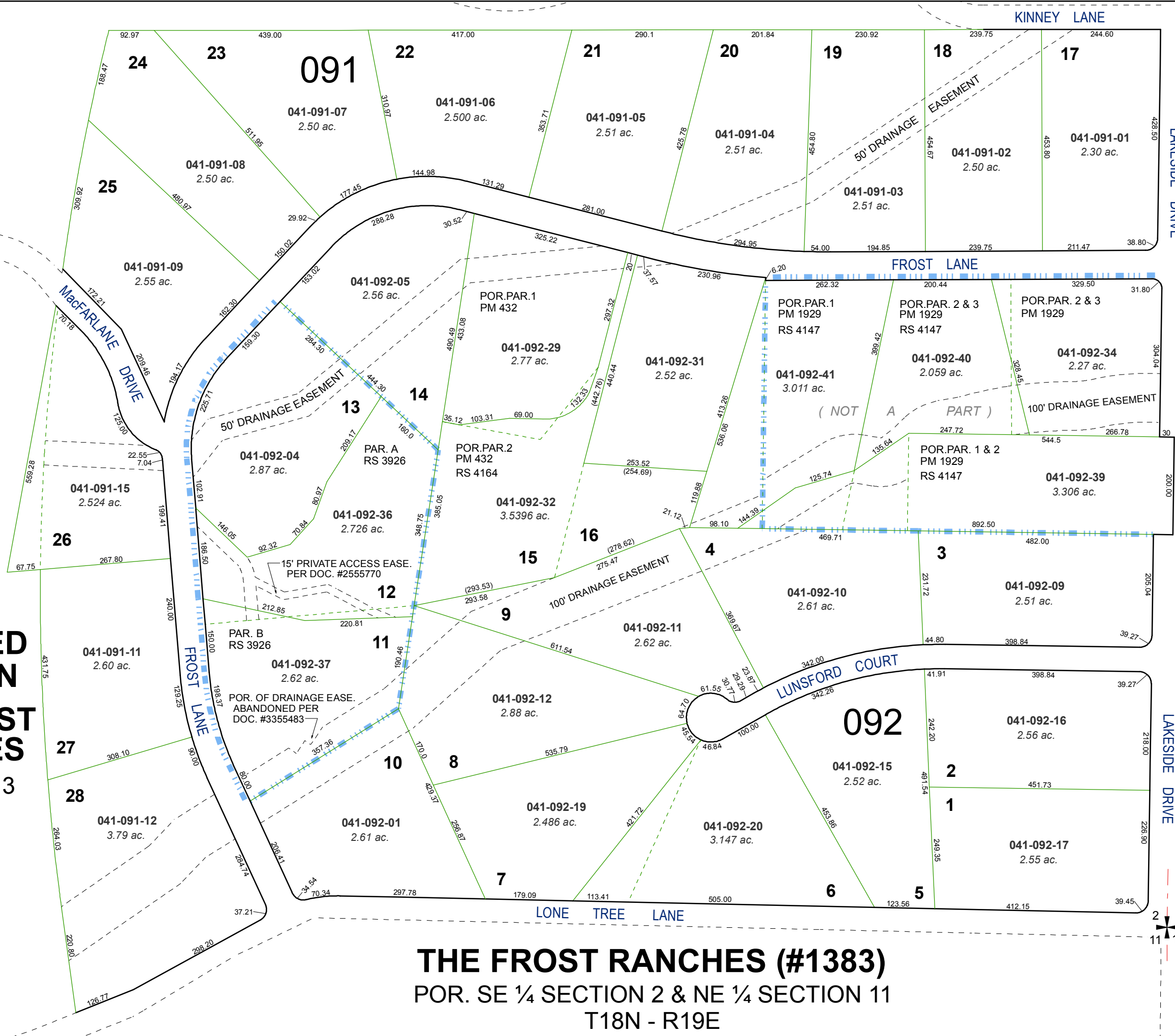


**(#1656)  
AMENDED  
PORTION  
THE FROST  
RANCHES  
LOTS 11 - 13**

**THE FROST RANCHES (#1383)  
POR. SE ¼ SECTION 2 & NE ¼ SECTION 11  
T18N - R19E**

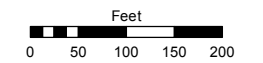


Assessor's Map Number

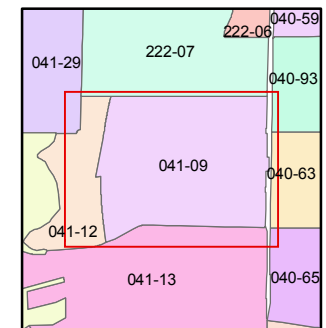
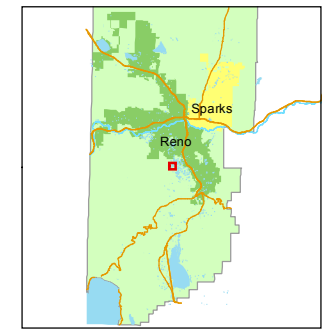
**041-09**

STATE OF NEVADA  
**WASHOE COUNTY**  
ASSESSOR'S OFFICE  
Joshua G. Wilson, Assessor

1001 East Ninth Street  
Building D  
Reno, Nevada 89512  
(775) 328-2231



1 inch = 200 feet



created by: KSB 10/24/11

last updated: \_\_\_\_\_

area previously shown on map(s)  
041-12

NOTE: This map was prepared for the use of the Washoe County Assessor for assessment and illustrative purposes only. It does not represent a survey of the premises. No liability is assumed as to the sufficiency or accuracy of the data delineated hereon.