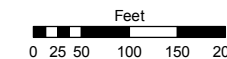


Assessor's Map Number

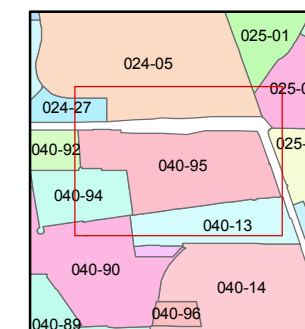
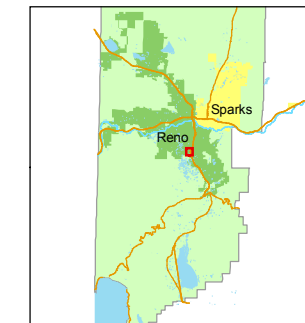
040-95

STATE OF NEVADA
WASHOE COUNTY
ASSESSOR'S OFFICE
Joshua G. Wilson, Assessor

1001 East Ninth Street
Building D
Reno, Nevada 89512
(775) 328-2231



1 inch = 200 feet



created by: CFB 06/16/2010

last updated: _____

area previously shown on map(s)

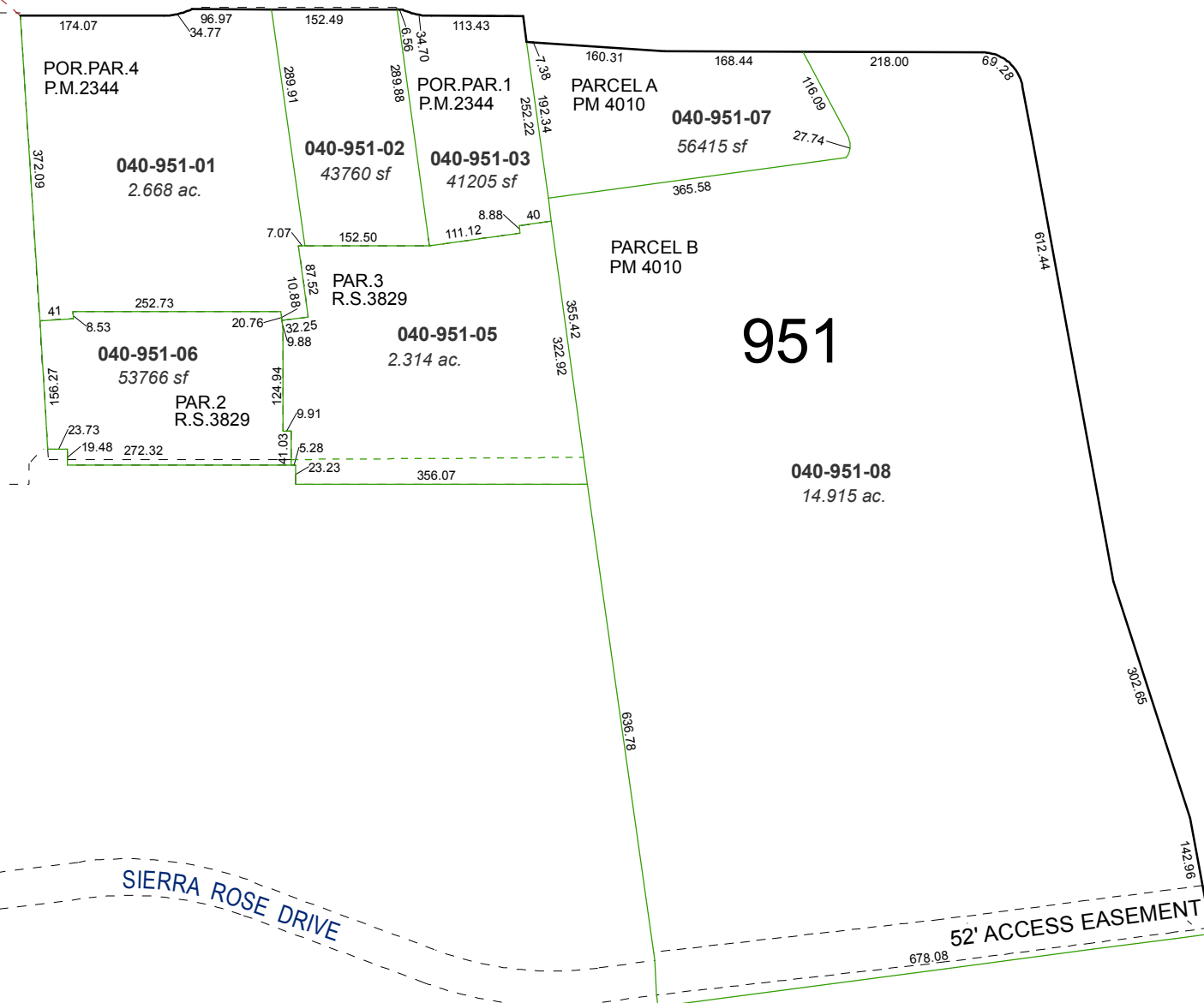
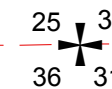
NOTE: This map was prepared for the use of the Washoe County Assessor for assessment and illustrative purposes only. It does not represent a survey of the premises. No liability is assumed as to the sufficiency or accuracy of the data delineated hereon.

PORTION OF SECTION 36
T19N - R19E
PORTION OF SECTION 31
T19N - R20E

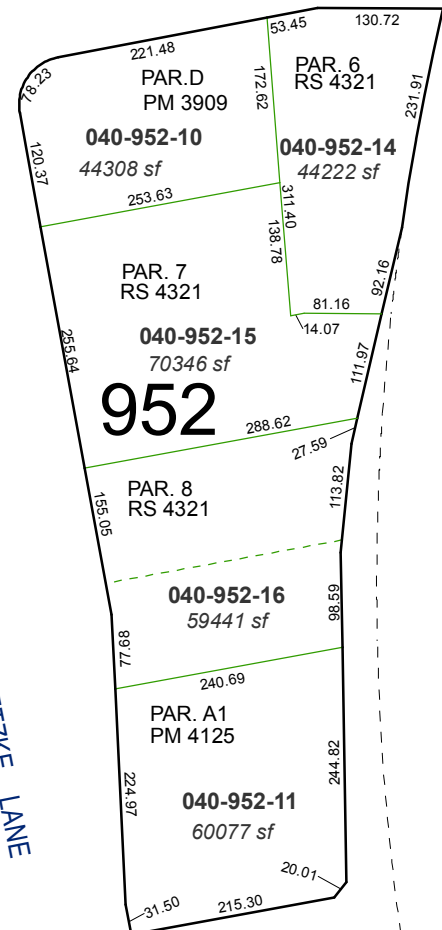
BOOK 24

KIETZKE LANE

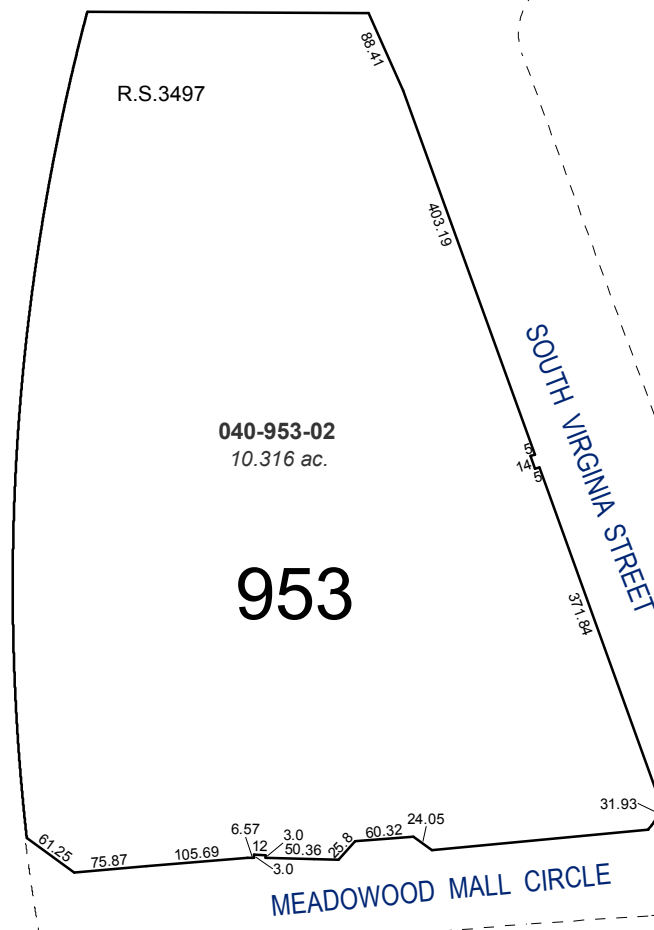
SOUTH McCARRAN BLVD.



951



952



953

SIERRA ROSE DRIVE

52' ACCESS EASEMENT

KIETZKE LANE

U. S. HWY. 395

SOUTH VIRGINIA STREET

MEADOWWOOD MALL CIRCLE