

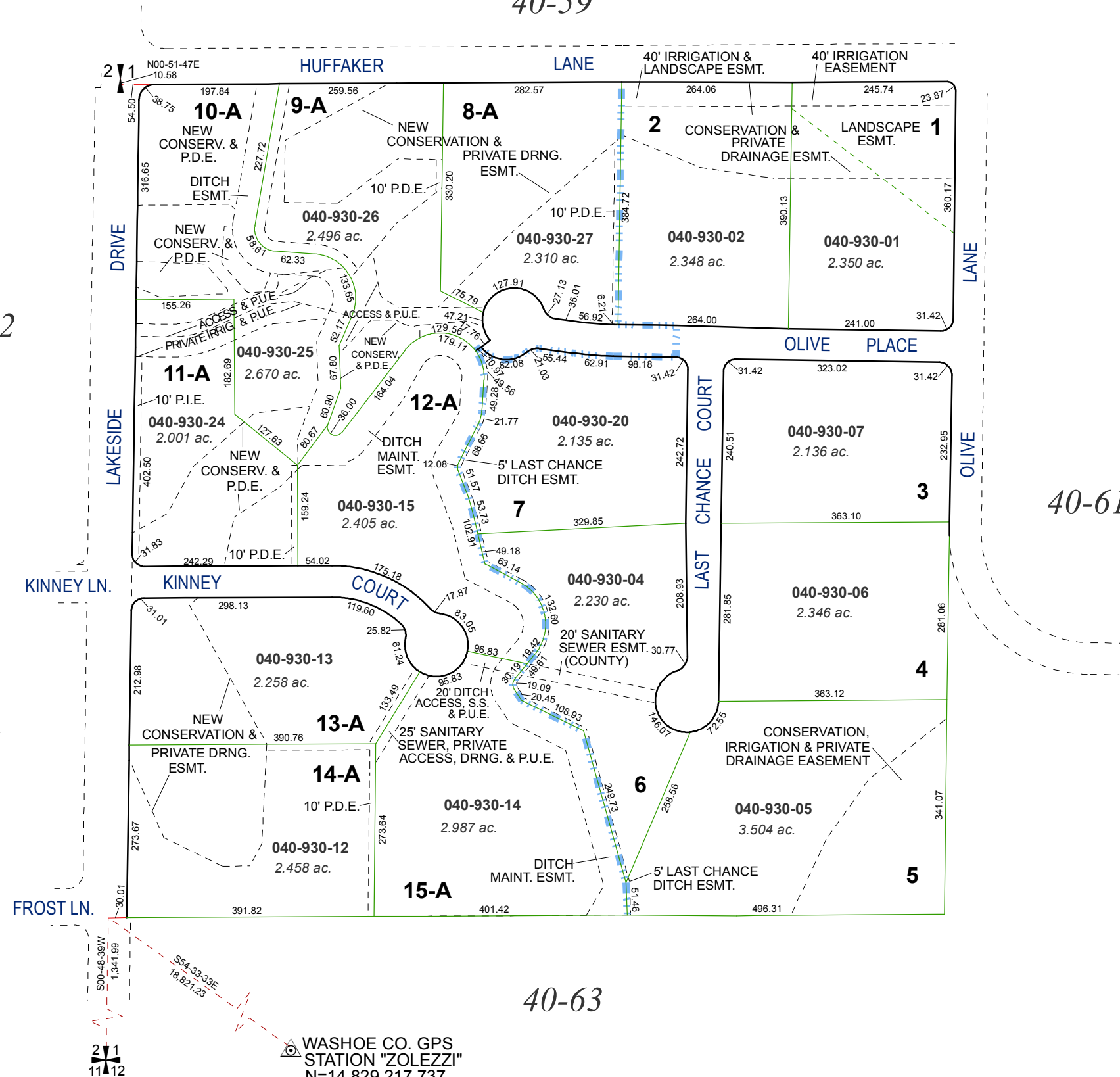
**(#4074)
AMENDED
LAKESIDE RANCH ESTATES
PHASE 2**

**(#3814)
LAKESIDE RANCH ESTATES - PHASE 1
POR. OF THE SW 1/4 OF SEC. 1, T18N - R19E**

40-59

BOOK 222

BOOK 41



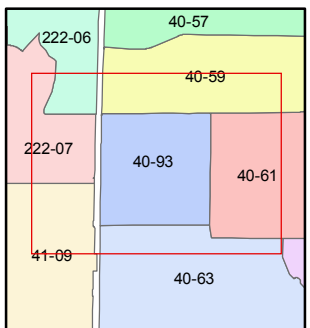
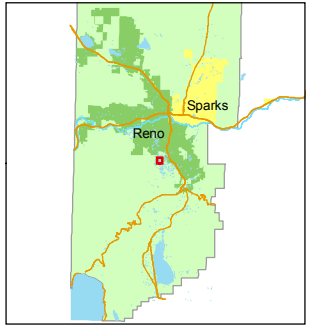
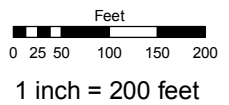
40-63

WASHOE CO. GPS STATION "ZOLEZZI"
N=14,829,217.737
E= 2,294,607.683

Assessor's Map Number
040-93

STATE OF NEVADA
WASHOE COUNTY
ASSESSOR'S OFFICE
Joshua G. Wilson, Assessor

1001 East Ninth Street
Building D
Reno, Nevada 89512
(775) 328-2231



created by: TWT 9/9/2009
last updated: _____
area previously shown on map(s)
040-61

NOTE: This map was prepared for the use of the Washoe County Assessor for assessment and illustrative purposes only. It does not represent a survey of the premises. No liability is assumed as to the sufficiency or accuracy of the data delineated hereon.