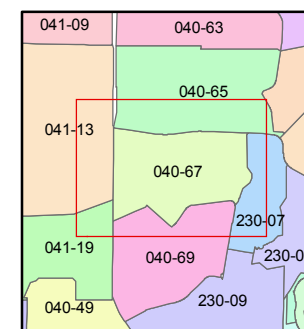
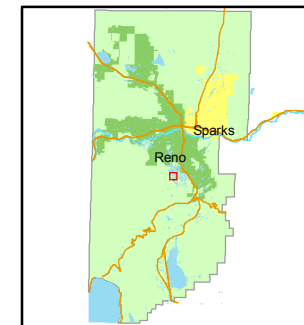


1 inch = 200 feet



created by: NLH 9/21/2010

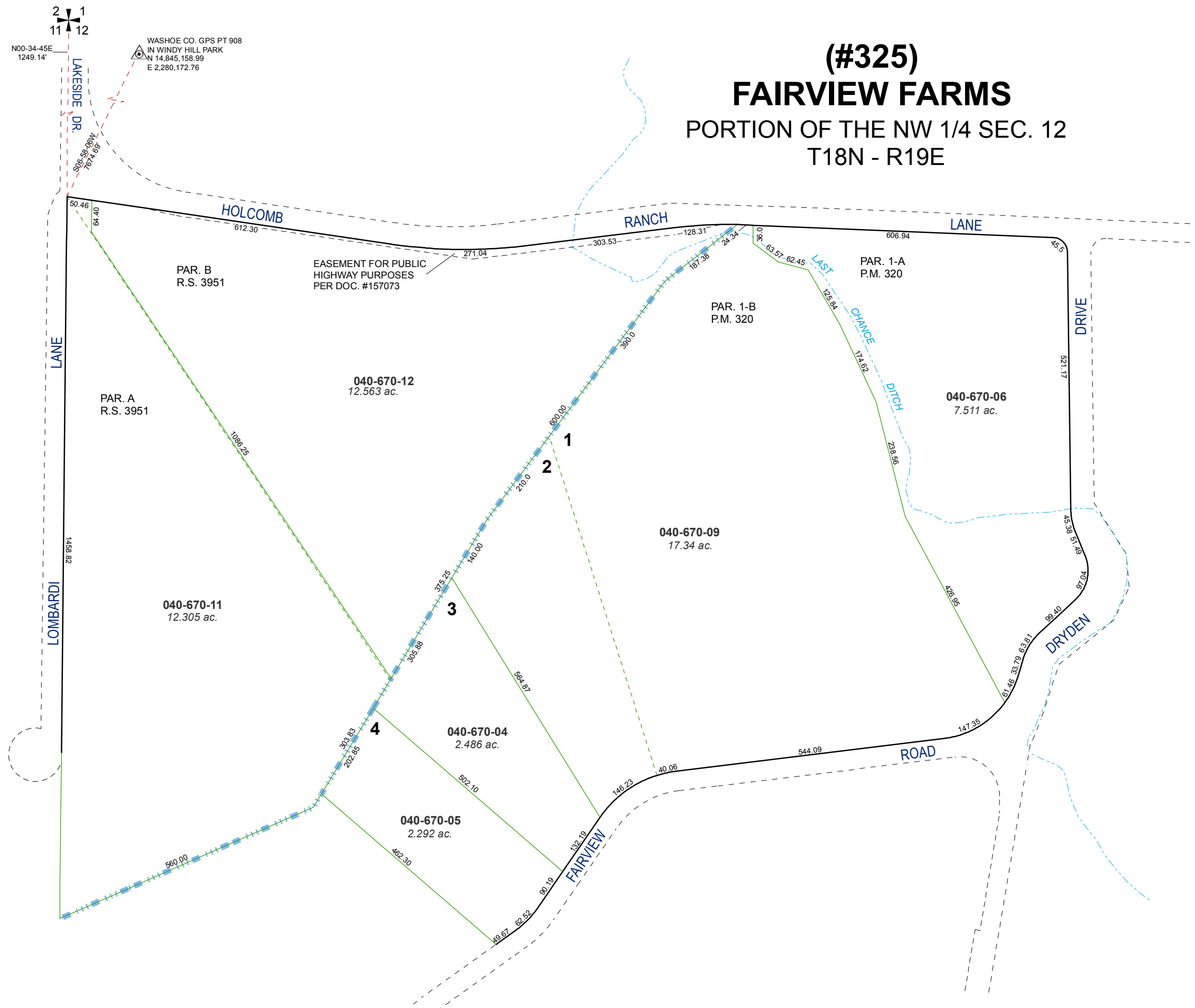
last updated: _____

area previously shown on map(s)

NOTE: This map was prepared for the use of the Washoe County Assessor for assessment and illustrative purposes only. It does not represent a survey of the premises. No liability is assumed as to the sufficiency or accuracy of the data delineated herein.

(#325) FAIRVIEW FARMS

PORTION OF THE NW 1/4 SEC. 12 T18N - R19E



WASHOE CO. GPS PT 908
IN WINDY HILL PARK
N 14,845,158.99
E 2,280,172.76

N00-34-45E
1249.14'

