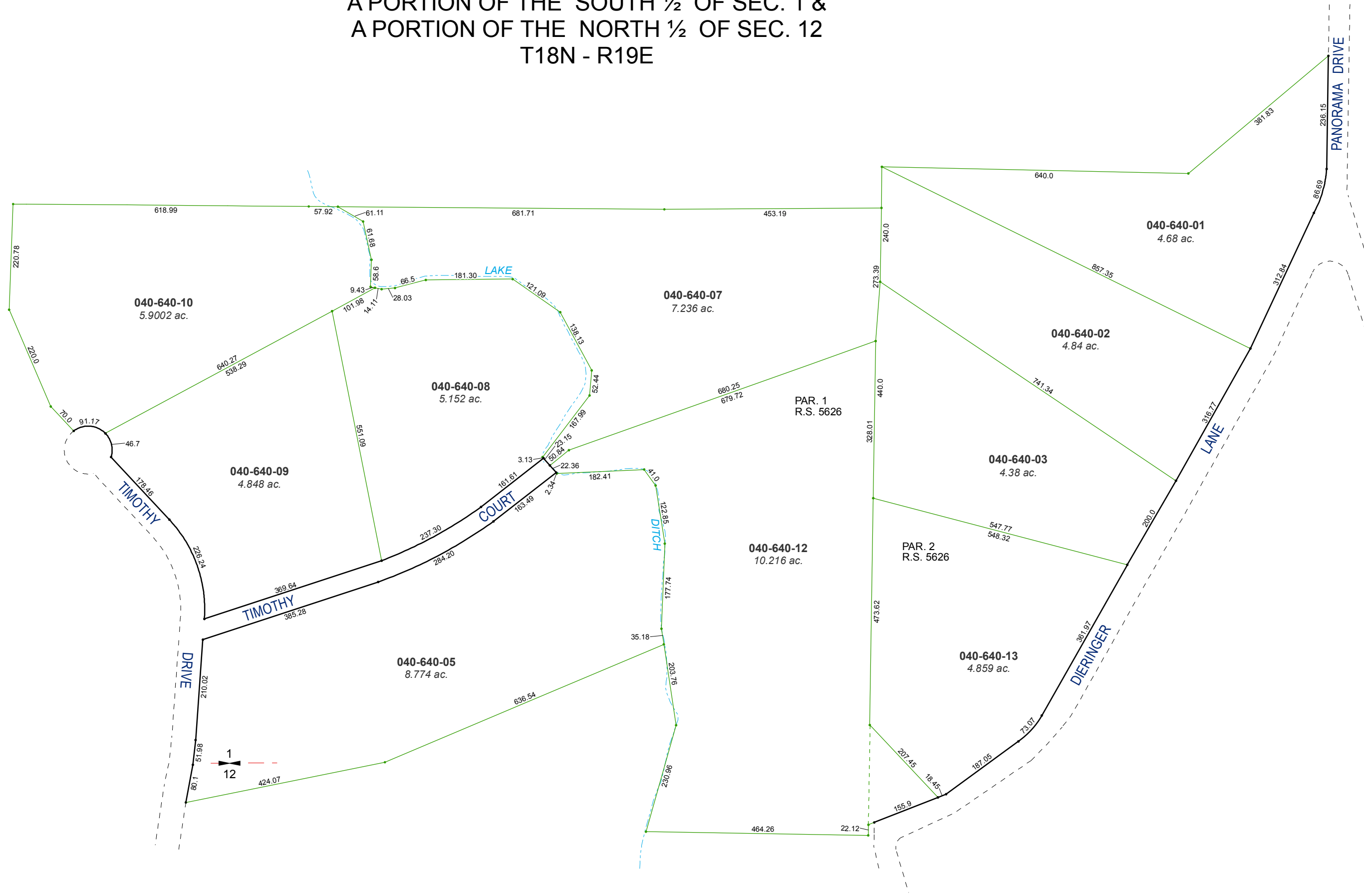


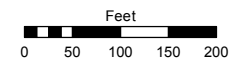
A PORTION OF THE SOUTH ½ OF SEC. 1 &
A PORTION OF THE NORTH ½ OF SEC. 12
T18N - R19E



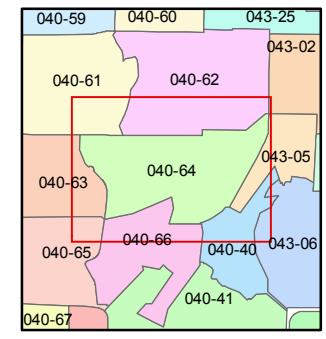
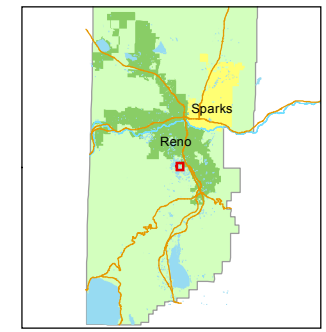
Assessor's Map Number
040-64

STATE OF NEVADA
WASHOE COUNTY
ASSESSOR'S OFFICE
Joshua G. Wilson, Assessor

1001 East Ninth Street
Building D
Reno, Nevada 89512
(775) 328-2231



1 inch = 200 feet



created by: EMG 9/23/2014

last updated: EMG 4/14/15

area previously shown on map(s)

NOTE: This map was prepared for the use of the Washoe County Assessor for assessment and illustrative purposes only. It does not represent a survey of the premises. No liability is assumed as to the sufficiency or accuracy of the data delineated hereon.