

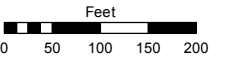
PORTIONS OF THE SW 1/4 SECTION 1
& THE NW 1/4 SECTION 12
T18N - R19E

Assessor's Map Number

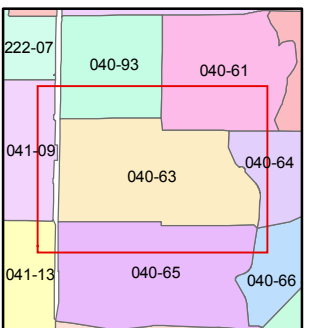
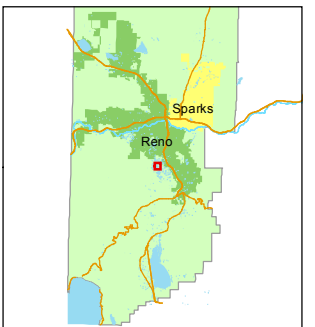
040-63

STATE OF NEVADA
WASHOE COUNTY
ASSESSOR'S OFFICE
Joshua G. Wilson, Assessor

1001 East Ninth Street
Building D
Reno, Nevada 89512
(775) 328-2231



1 inch = 200 feet



created by: KSB 3/04/10

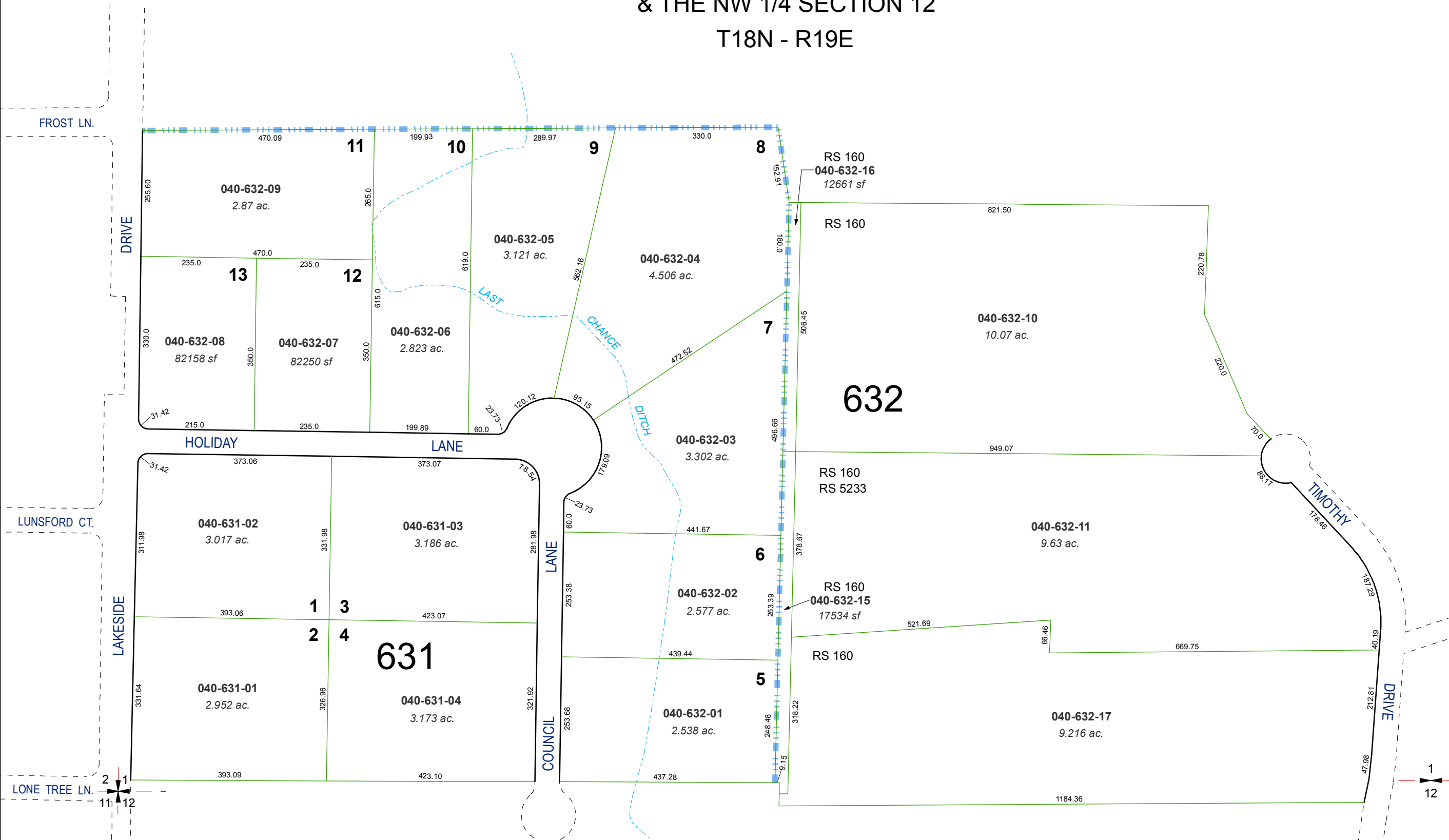
last updated: KSB 11/16/11

area previously shown on map(s)

040-25

NOTE: This map was prepared for the use of the Washoe County Assessor for assessment and illustrative purposes only. It does not represent a survey of the premises. No liability is assumed as to the sufficiency or accuracy of the data delineated hereon.

(#846)
LAKESIDE MEADOWS
UNIT NO. 2



1
2
11
12

1
12