

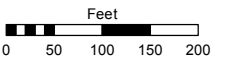
A PORTION OF THE SE 1/4 SEC. 1
T18N - R19E

Assessor's Map Number

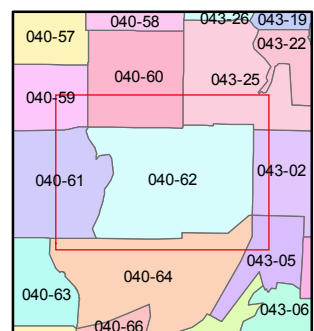
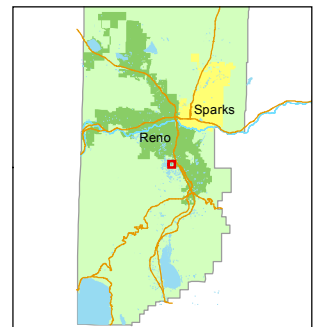
040-62

STATE OF NEVADA
WASHOE COUNTY
ASSESSOR'S OFFICE
Michael E. Clark, Assessor

1001 East Ninth Street
Building D
Reno, Nevada 89512
(775) 328-2231



1 inch = 200 feet

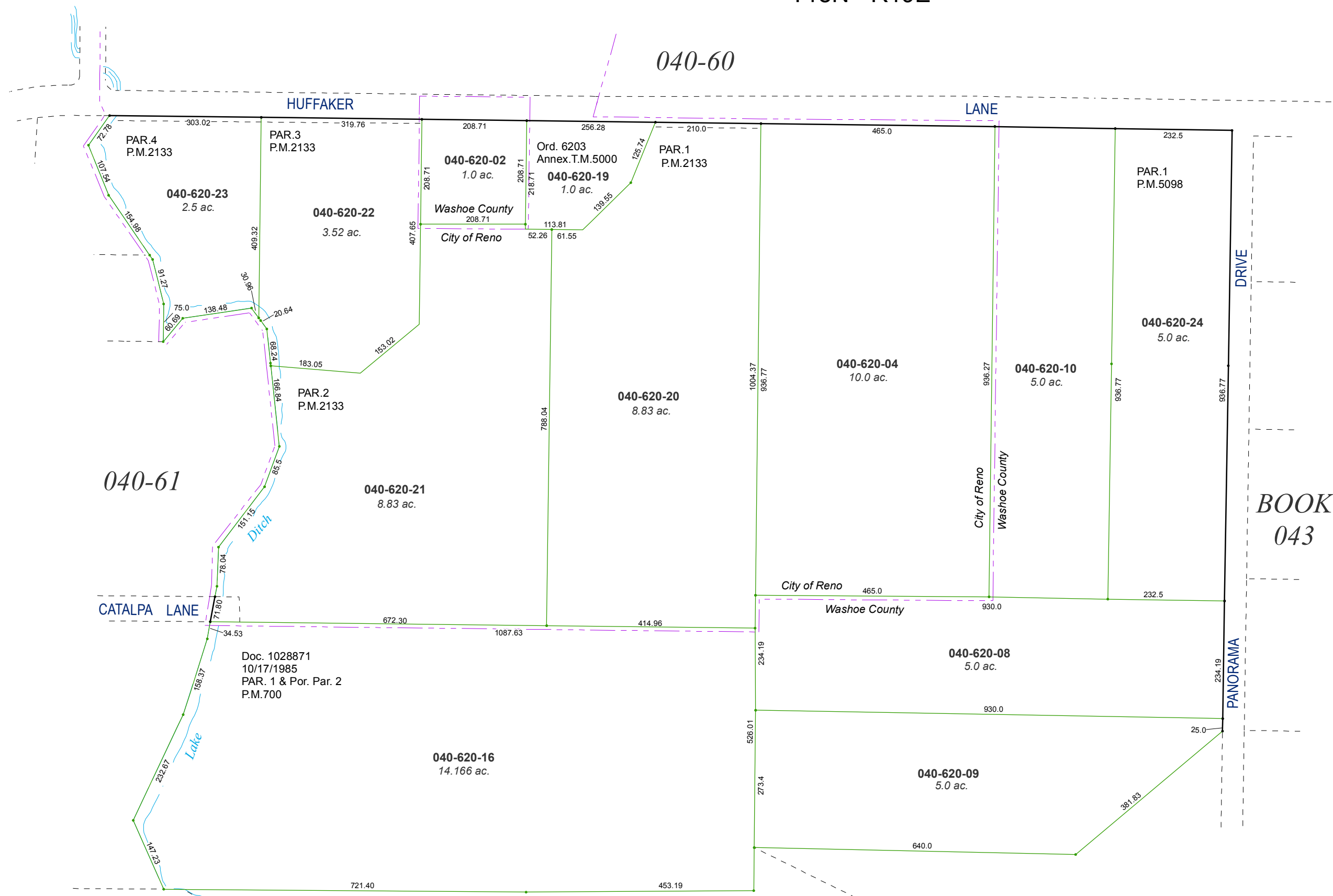


created by: CFB 03/21/2013

last updated: CFB 02/13/2015

area previously shown on map(s)

NOTE: This map was prepared for the use of the Washoe County Assessor for assessment and illustrative purposes only. It does not represent a survey of the premises. No liability is assumed as to the sufficiency or accuracy of the data delineated hereon.



040-60

040-61

040-64

BOOK
043

DRIVE

PANORAMA

HUFFAKER

LANE

CATALPA LANE

040-62-16
14.166 ac.

040-62-04
10.0 ac.

040-62-10
5.0 ac.

040-62-24
5.0 ac.

040-62-08
5.0 ac.

040-62-09
5.0 ac.

040-62-02
1.0 ac.

040-62-19
1.0 ac.

040-62-20
8.83 ac.

PAR.4
P.M.2133

PAR.3
P.M.2133

PAR.1
P.M.2133

PAR.1
P.M.5098

PAR.2
P.M.2133

Doc. 1028871
10/17/1985
PAR. 1 & Por. Par. 2
P.M.700

Washoe County
208.71
City of Reno

City of Reno

Washoe County

City of Reno
Washoe County