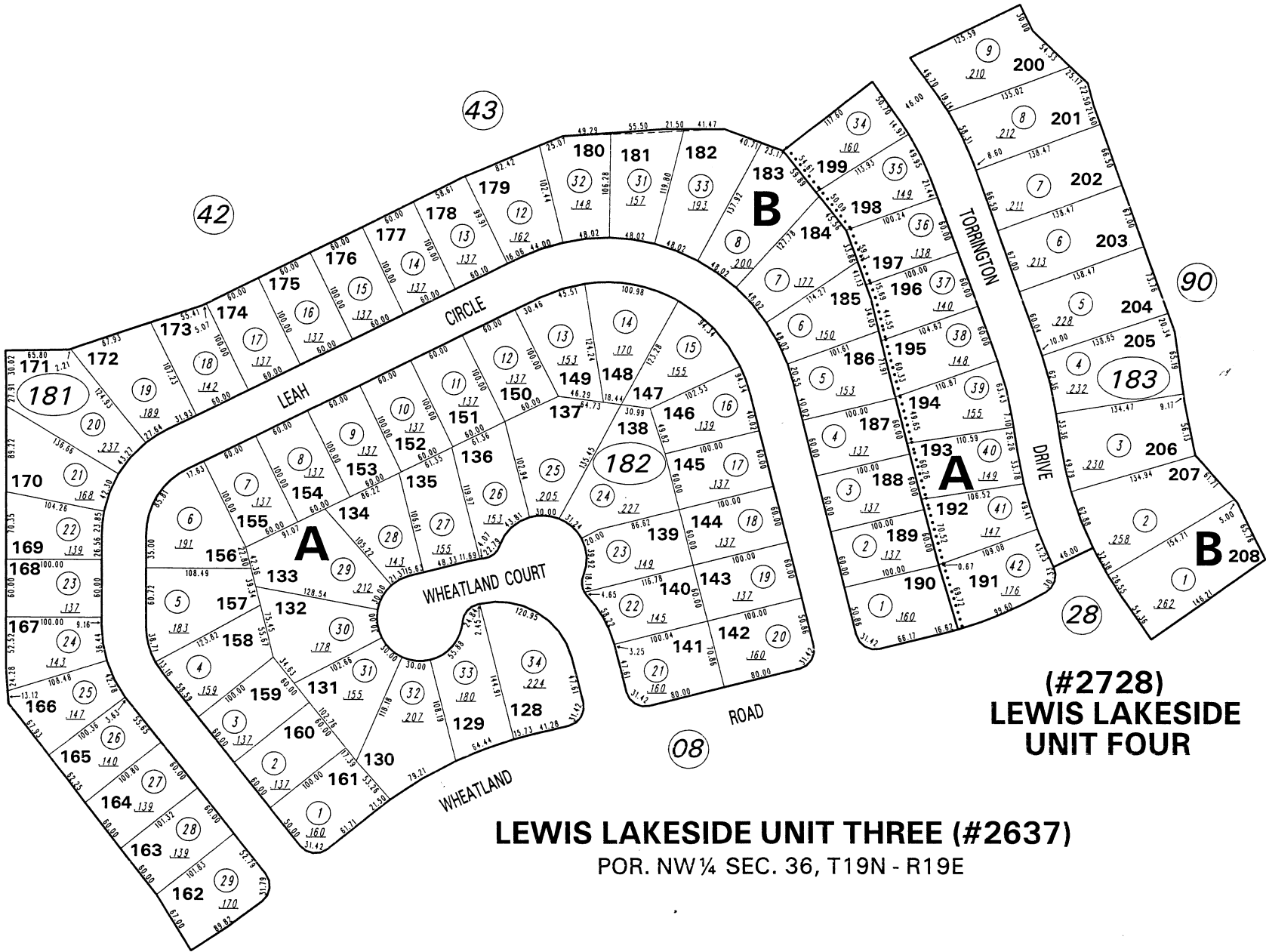


BOOK 42



LEWIS LAKESIDE UNIT THREE (#2637)

POR. NW ¼ SEC. 36, T19N - R19E

(#2728) LEWIS LAKESIDE UNIT FOUR

1" = 100'



NOTE: This map is prepared for the use of the Washoe County Assessor for assessment and illustrative purposes only. It does not represent a survey of the premises. No liability is assumed as to the sufficiency or the accuracy of the data delineated herein.

Office of Washoe County Assessor, Nevada - Robert W. McGowan

This area previously shown on _____
 NOTE:
 ASSESSOR'S BLOCK NUMBERS SHOWN IN ELLIPSES
 ASSESSOR'S PARCEL NUMBERS SHOWN IN CIRCLES

Drawn by GS 6/90
 Revised 2/94 1/97