

PORTION OF SECTION 36
T19N - R19E

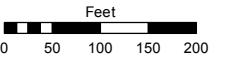
PORTION OF W 1/2 SECTION 31
T19N - R20E

Assessor's Map Number

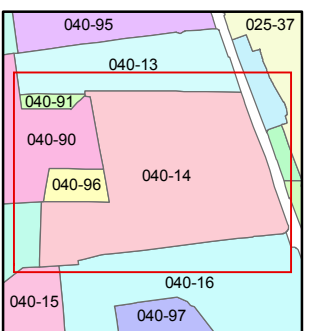
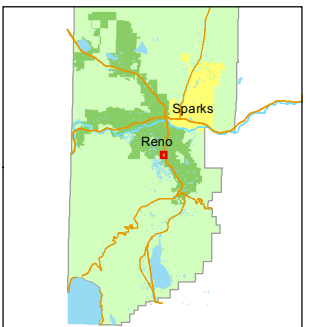
040-14

STATE OF NEVADA
WASHOE COUNTY
ASSESSOR'S OFFICE
Joshua G. Wilson, Assessor

1001 East Ninth Street
Building D
Reno, Nevada 89512
(775) 328-2231



1 inch = 200 feet



created by: CFB 02/16/2010

last updated: KSB 6/07/12

area previously shown on map(s)

NOTE: This map was prepared for the use of the Washoe County Assessor for assessment and illustrative purposes only. It does not represent a survey of the premises. No liability is assumed as to the sufficiency or accuracy of the data delineated hereon.

Washoe County
Reno City Limits

HAMMILL LANE

CRUMMER LANE

SOUTH

025-28

VIRGINIA STREET

STREET

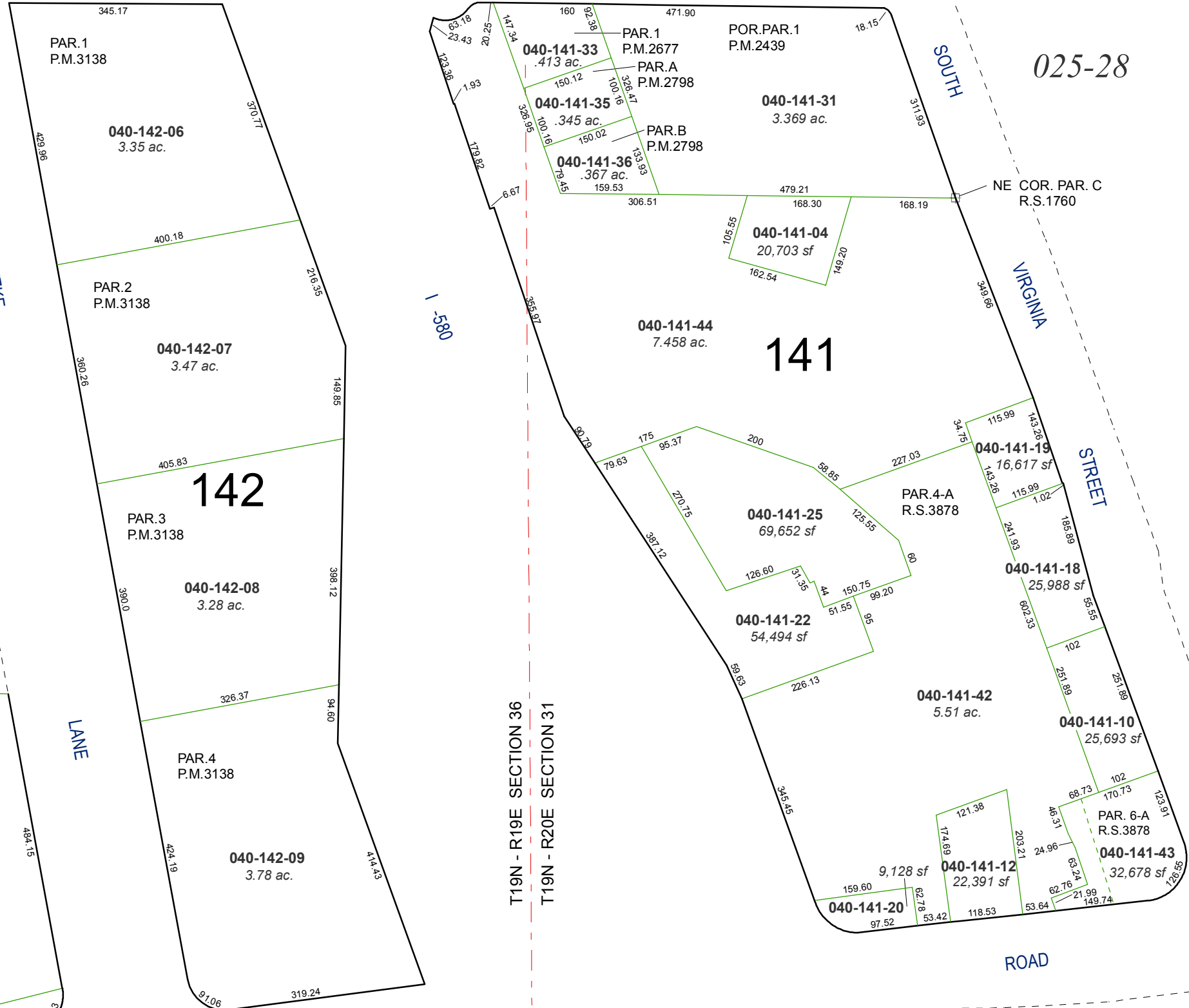
ROAD

NEIL

KIETZKE

1-580

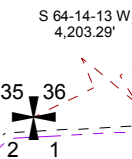
T19N - R19E SECTION 36
T19N - R20E SECTION 31



040-89

040-96

143



S 64-14-13 W
4,203.29'

Washoe County

DEL MONTE LANE