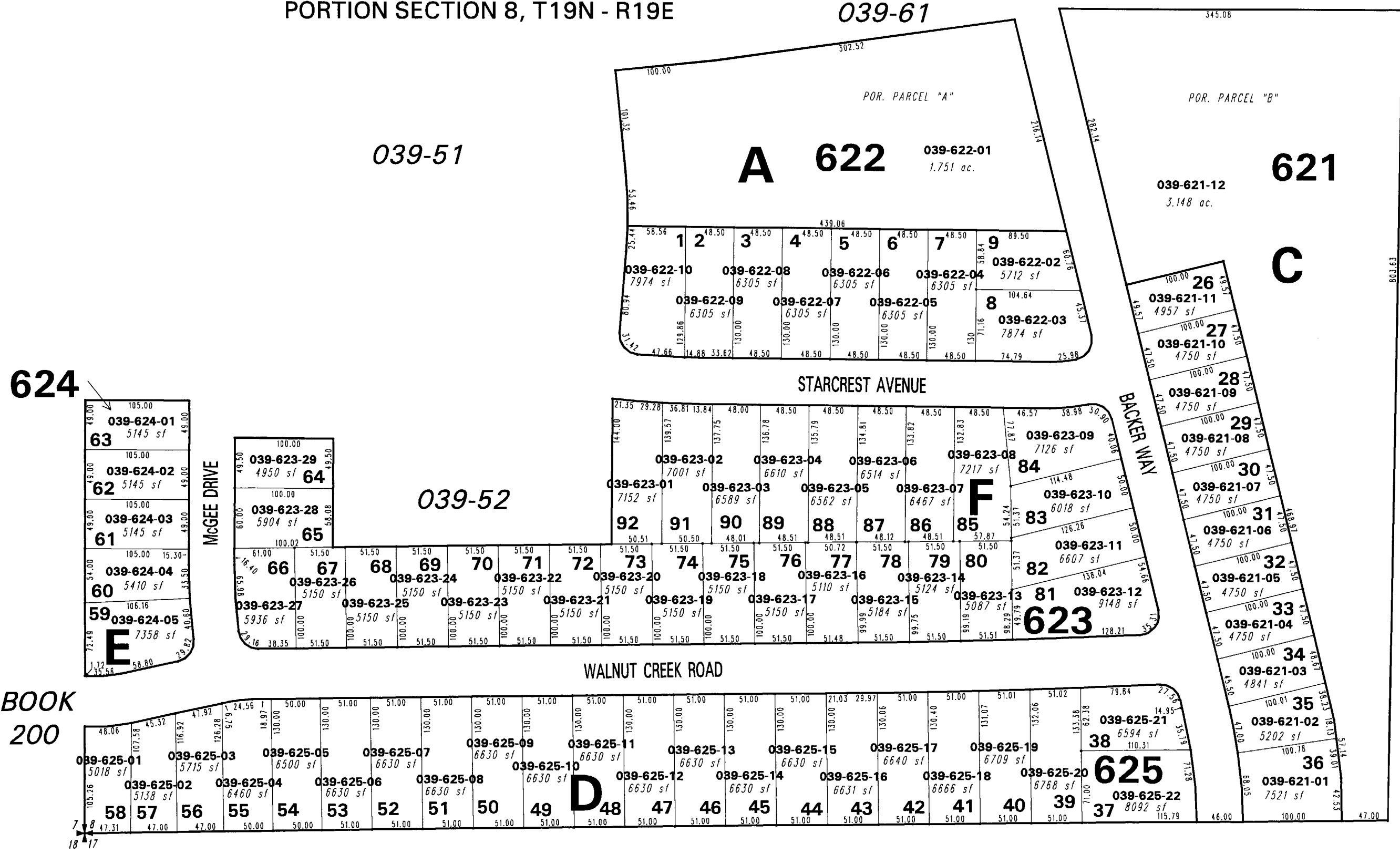


# BACKER TRUST PROPERTY UNIT NO. 2 (#2665)

PORTION SECTION 8, T19N - R19E

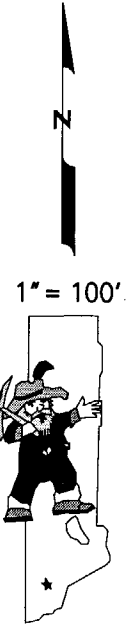
039-61



624

BOOK 200

202-17



NOTE: This map is prepared for the use of the Washoe County Assessor for assessment and illustrative purposes only. It does not represent a survey of the premises. No liability is assumed as to the sufficiency or the accuracy of the data delineated hereon.

Office of Washoe County Assessor, Nevada - Robert W. McGowan

This area previously shown on 39-17

NOTE: Areas of parcels which are less than 2 acres are shown in square feet.

Drawn by GS  
 Revised 11/93 6/95 HCS 11/14/02  
 PK 3/29/04