

PORTIONS OF SW ¼ SECTION 17
& SE ¼ SECTION 18

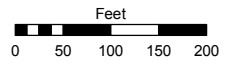
T19N - R19E

Assessor's Map Number

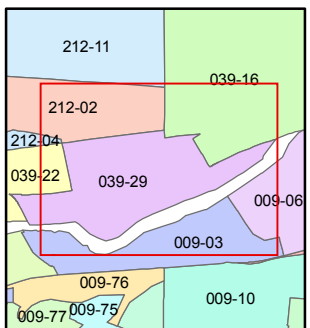
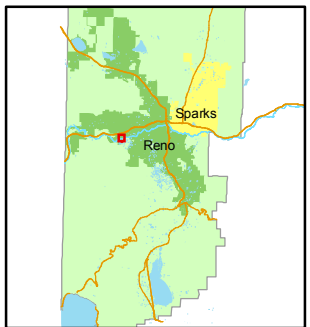
039-29

STATE OF NEVADA
WASHOE COUNTY
ASSESSOR'S OFFICE
Joshua G. Wilson, Assessor

1001 East Ninth Street
Building D
Reno, Nevada 89512
(775) 328-2231



1 inch = 200 feet

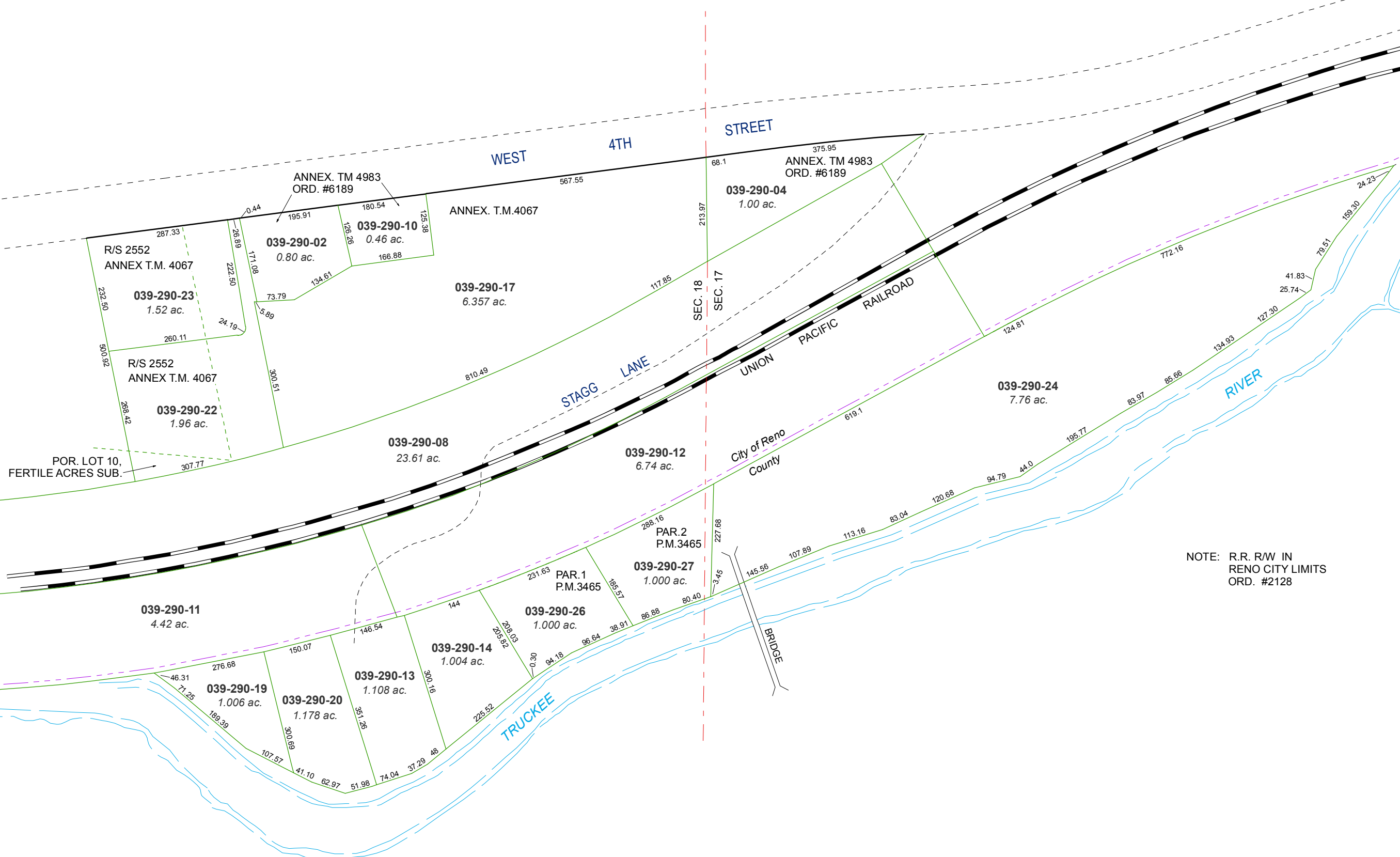


created by: KSB 7/22/11

last updated: _____

area previously shown on map(s)

NOTE: This map was prepared for the use of the Washoe County Assessor for assessment and illustrative purposes only. It does not represent a survey of the premises. No liability is assumed as to the sufficiency or accuracy of the data delineated hereon.



NOTE: R.R. R/W IN RENO CITY LIMITS ORD. #2128