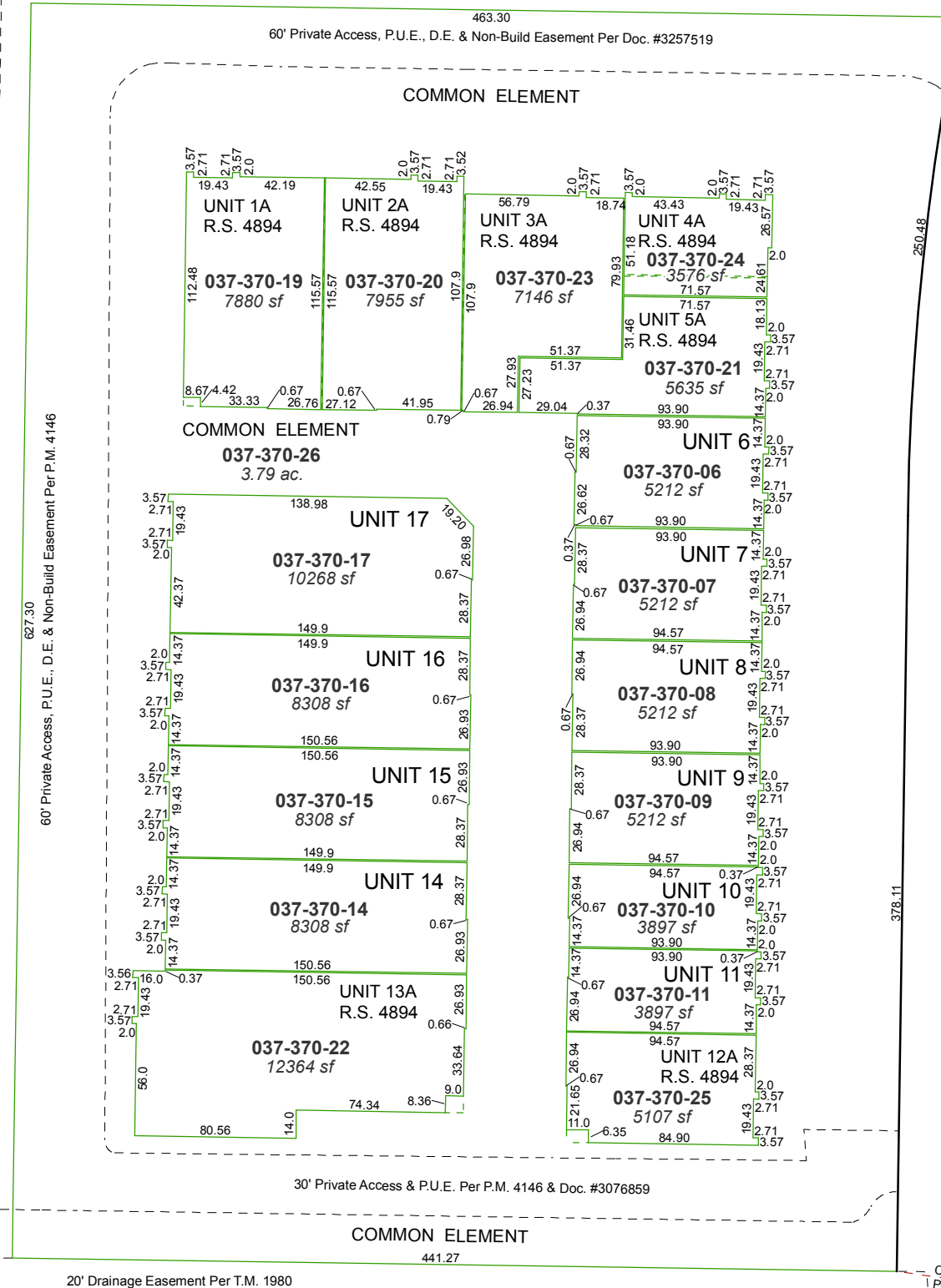


(#4544)
VISTA BUSINESS PARK - PHASE 1
 A POR. OF THE SE ¼ OF SEC. 2
 T19N - R20E



BOULEVARD

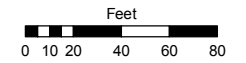
VISTA

LOOP ROAD

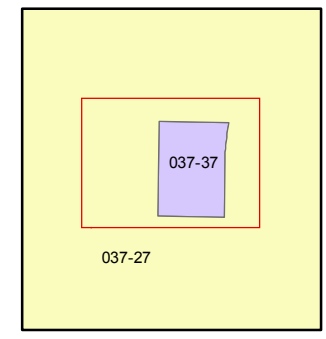
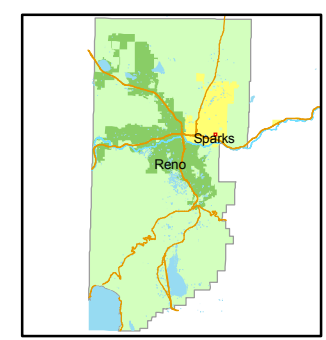
Assessor's Map Number
037-37

STATE OF NEVADA
WASHOE COUNTY
ASSESSOR'S OFFICE
 Joshua G. Wilson, Assessor

1001 East Ninth Street
 Building D
 Reno, Nevada 89512
 (775) 328-2231



1 inch = 80 feet

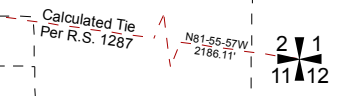


created by: NLH 7/20/2010

last updated: _____

area previously shown on map(s)
037-27

NOTES:
 All areas shown are internal square footages.
 Exterior walls (not shown) are all 0.72' from interior walls.



NOTE: This map was prepared for the use of the Washoe County Assessor for assessment and illustrative purposes only. It does not represent a survey of the premises. No liability is assumed as to the sufficiency or accuracy of the data delineated hereon.