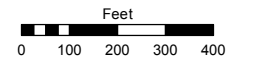
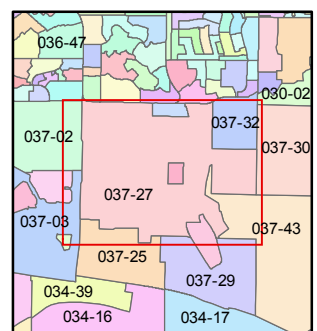
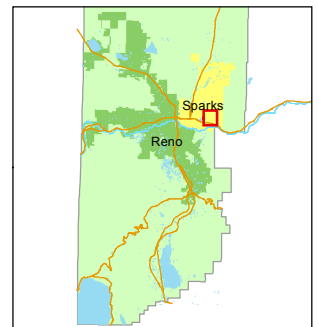


STATE OF NEVADA  
**WASHOE COUNTY**  
ASSESSOR'S OFFICE  
Michael E. Clark, Assessor

1001 East Ninth Street  
Building D  
Reno, Nevada 89512  
(775) 328-2231



1 inch = 400 feet



created by: KSB 3/25/2010

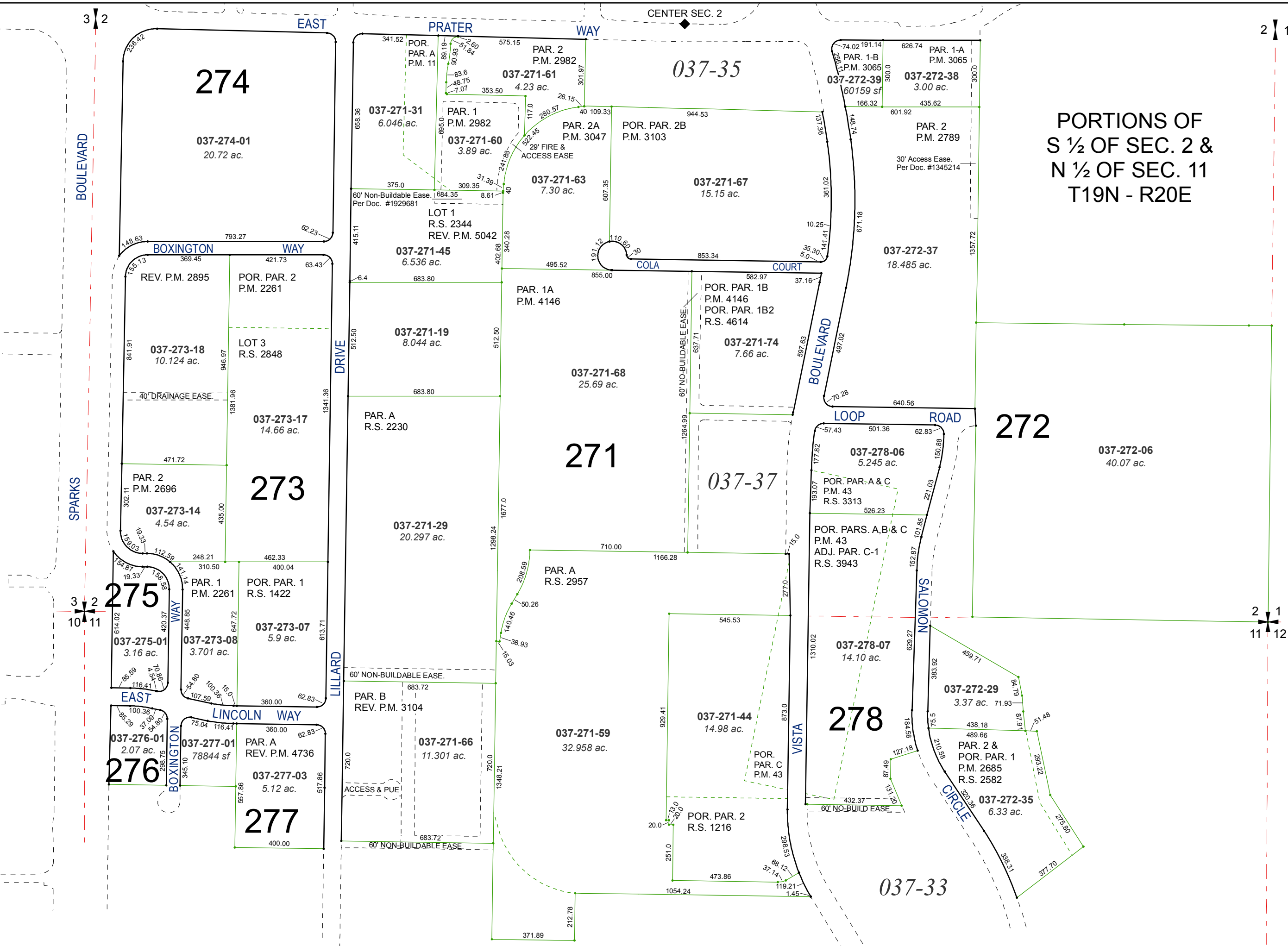
last updated: NLH 2/09/11 EMG 7/2/15

area previously shown on map(s)

034-19, 20 & 037-26, 28

NOTE: This map was prepared for the use of the Washoe County Assessor for assessment and illustrative purposes only. It does not represent a survey of the premises. No liability is assumed as to the sufficiency or accuracy of the data delineated hereon.

**PORTIONS OF  
S 1/2 OF SEC. 2 &  
N 1/2 OF SEC. 11  
T19N - R20E**



3 2

2 1

3 2  
10 11

2 1  
11 12