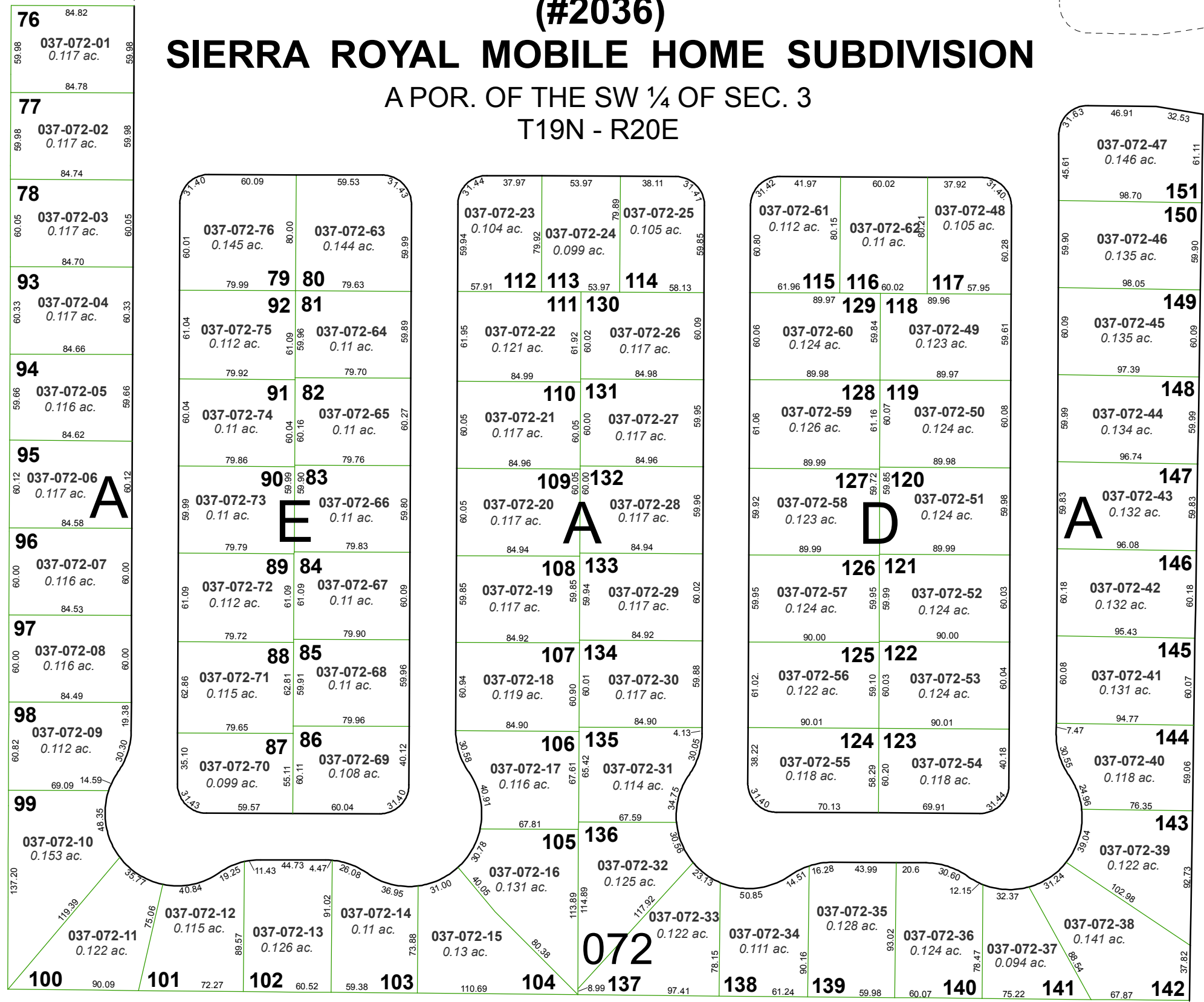


037-07-S1

(#2036)

SIERRA ROYAL MOBILE HOME SUBDIVISION

A POR. OF THE SW ¼ OF SEC. 3
T19N - R20E



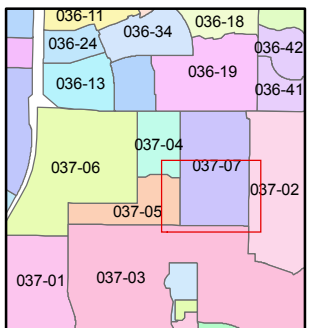
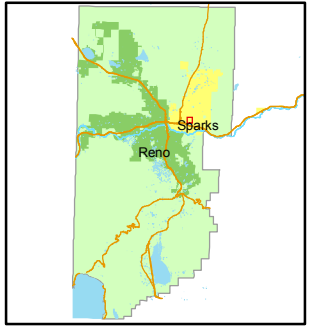
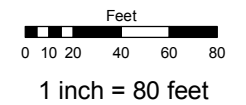
LANE

PARLANTI

Assessor's Map Number
037-07-S2

STATE OF NEVADA
WASHOE COUNTY
ASSESSOR'S OFFICE
Joshua G. Wilson, Assessor

1001 East Ninth Street
Building D
Reno, Nevada 89512
(775) 328-2231



created by: NLH 7/14/2010

last updated: _____

area previously shown on map(s) _____

NOTE:
SEE PAGE 037-07 FOR COMMON AREA PARCEL

NOTE: This map was prepared for the use of the Washoe County Assessor for assessment and illustrative purposes only. It does not represent a survey of the premises. No liability is assumed as to the sufficiency or accuracy of the data delineated hereon.