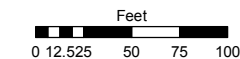
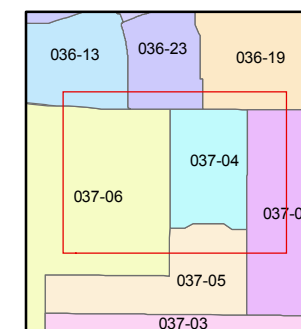
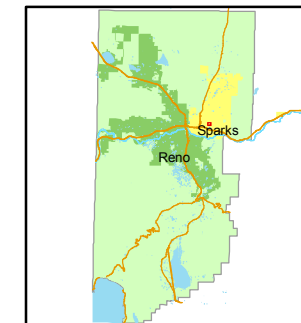


STATE OF NEVADA
WASHOE COUNTY
ASSESSOR'S OFFICE
 Joshua G. Wilson, Assessor

1001 East Ninth Street
 Building D
 Reno, Nevada 89512
 (775) 328-2231



1 inch = 100 feet



created by: NLH 4/05/2011

last updated: _____

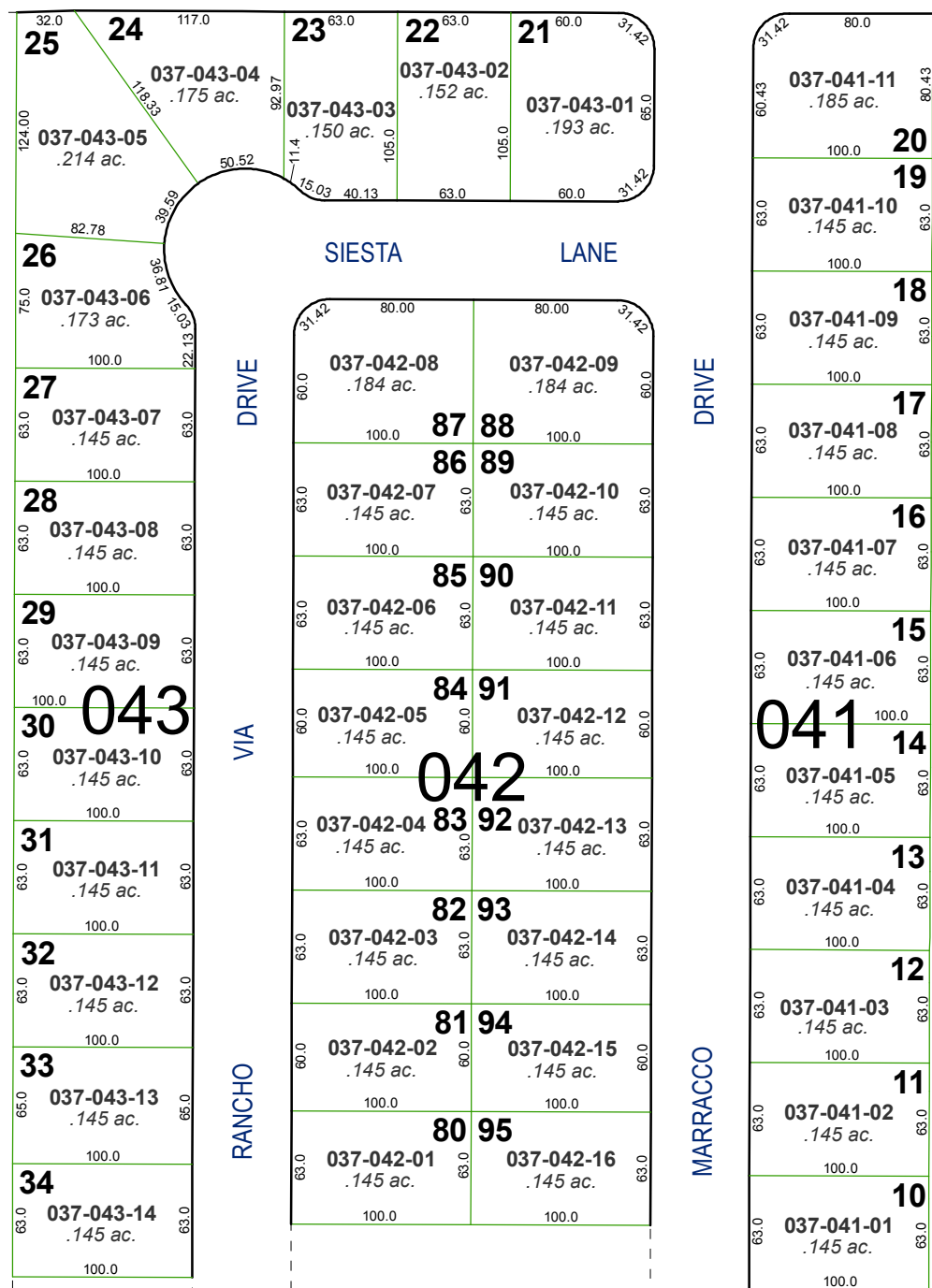
area previously shown on map(s)

NOTE: This map was prepared for the use of the Washoe County Assessor for assessment and illustrative purposes only. It does not represent a survey of the premises. No liability is assumed as to the sufficiency or accuracy of the data delineated herein.

(#1335)
SIERRA MEADOWS SUBDIVISION
UNIT NO. 8

A POR. OF THE SW ¼ OF SEC. 3
 T19N - R20E

EAST PRATER WAY



DRIVE

VIA

RANCHO

DRIVE

MARRACCO