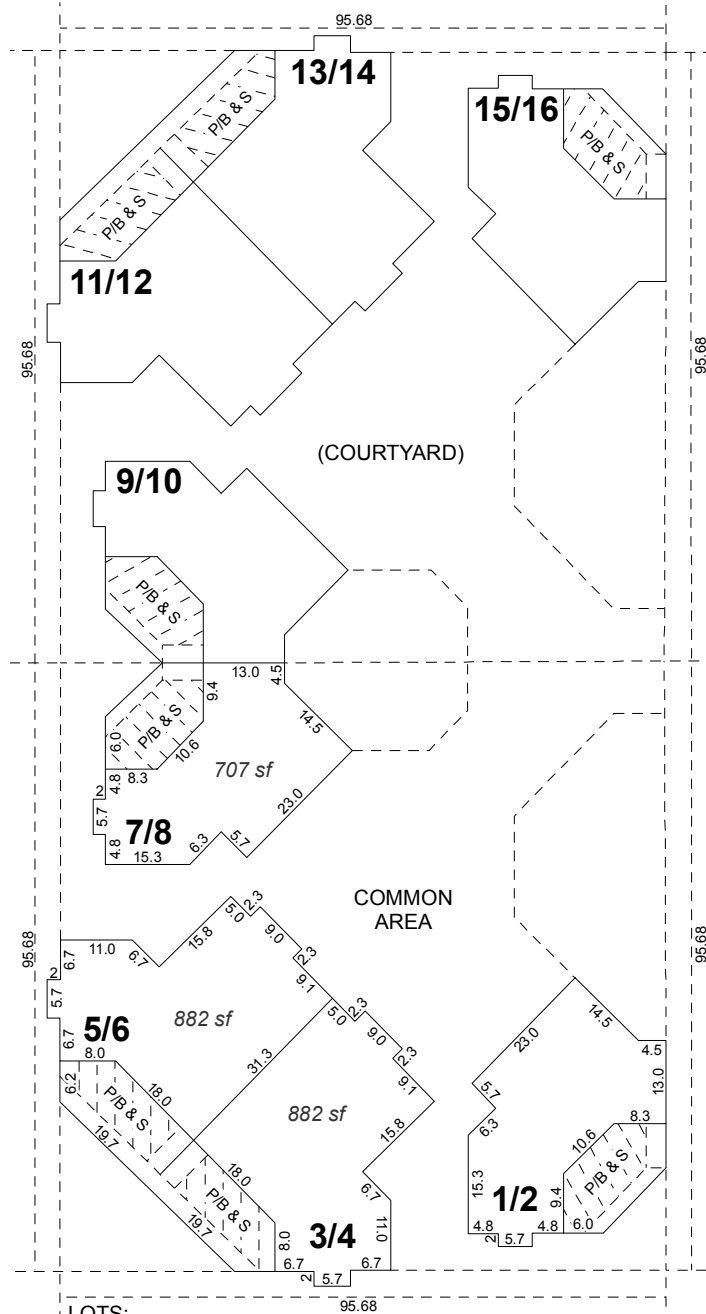


(#2334) WILLOW CREEK CONDOMINIUM - UNIT NO. 4

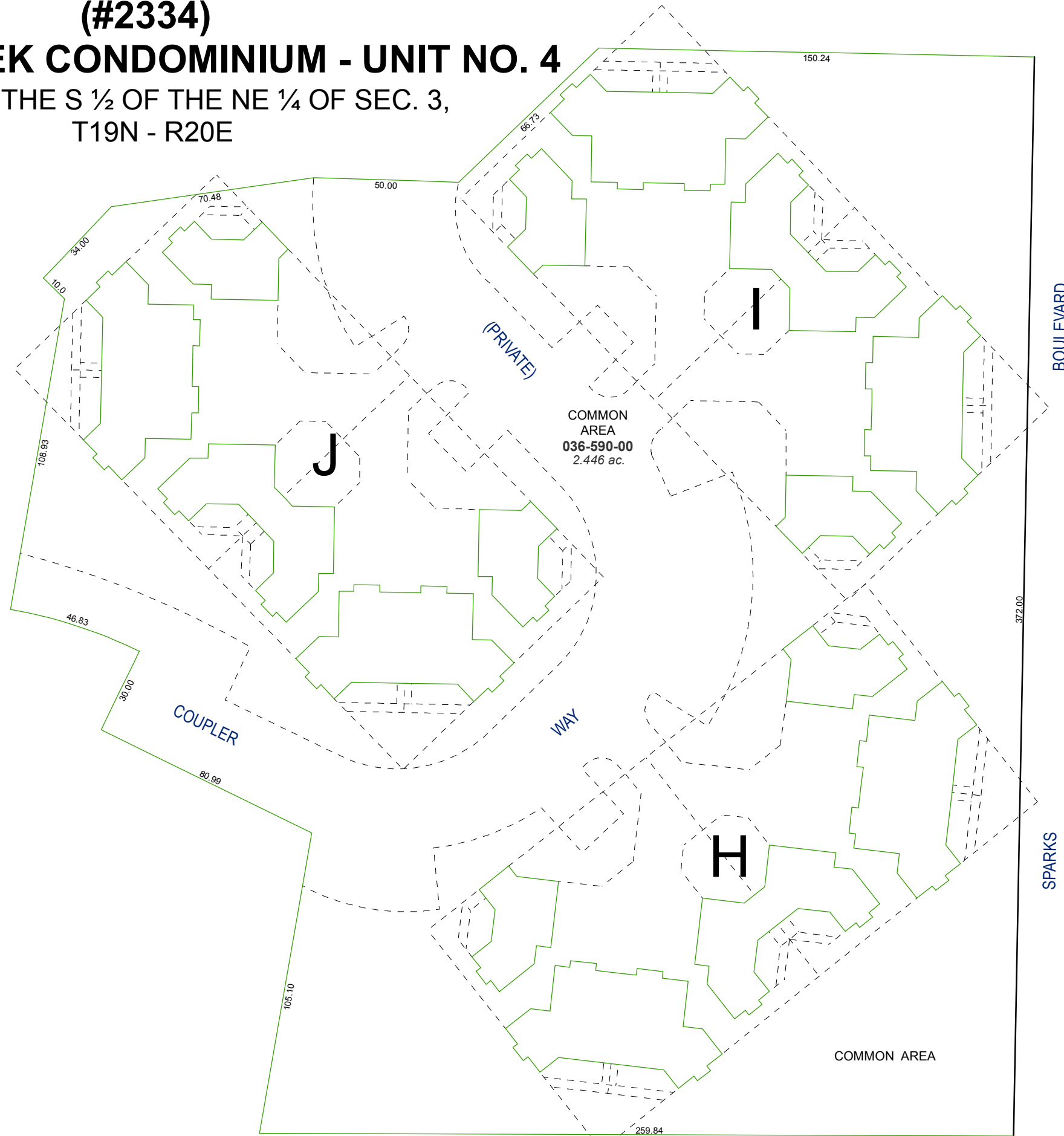
A POR. OF THE S 1/2 OF THE NE 1/4 OF SEC. 3,
T19N - R20E



LOTS:
1/2 = First Floor/Second Floor
 P/B & S = PATIO/BALCONY & STORAGE

TYPICAL UNIT DETAILS & LAYOUT

- NOT TO SCALE -



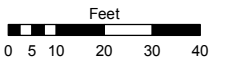
NOTES:
 TO EACH UNIT AN UNDIVIDED 1/48 INTEREST IN COMMON AREA
 SEE PAGES 036-59-S1 & S2 FOR UNIT PARCELS

Assessor's Map Number

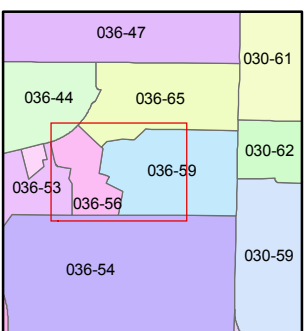
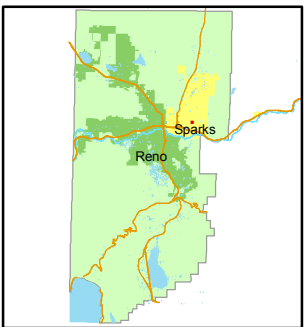
036-59

STATE OF NEVADA
WASHOE COUNTY
 ASSESSOR'S OFFICE
 Joshua G. Wilson, Assessor

1001 East Ninth Street
 Building D
 Reno, Nevada 89512
 (775) 328-2231



1 inch = 40 feet



created by: NLH 6/30/2010

last updated: _____

area previously shown on map(s)

NOTE: This map was prepared for the use of the Washoe County Assessor for assessment and illustrative purposes only. It does not represent a survey of the premises. No liability is assumed as to the sufficiency or accuracy of the data delineated hereon.