

WOODSIDE DRIVE

(#1339)

# WOODSIDE SUBDIVISION - UNIT NO. 2-A

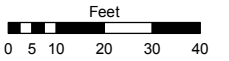
A POR. OF THE NW ¼ OF SEC. 3,  
T19N - R20E

Assessor's Map Number

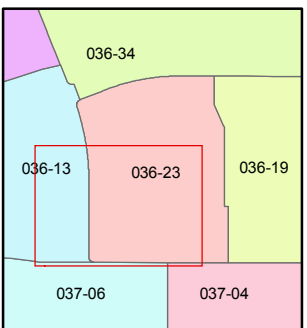
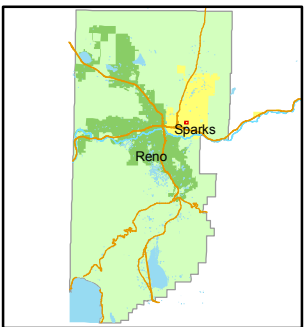
**036-23-S1**

STATE OF NEVADA  
**WASHOE COUNTY**  
ASSESSOR'S OFFICE  
Joshua G. Wilson, Assessor

1001 East Ninth Street  
Building D  
Reno, Nevada 89512  
(775) 328-2231



1 inch = 40 feet



created by: NLH 6/18/2010

last updated: \_\_\_\_\_

area previously shown on map(s)  
\_\_\_\_\_

NOTE: This map was prepared for the use of the Washoe County Assessor for assessment and illustrative purposes only. It does not represent a survey of the premises. No liability is assumed as to the sufficiency or accuracy of the data delineated herein.

HOWARD DRIVE

DRIVE

DRIVE

WOODBERRY DRIVE

CHERRYTREE DRIVE

DRIVE

EAST

PRATER

WAY

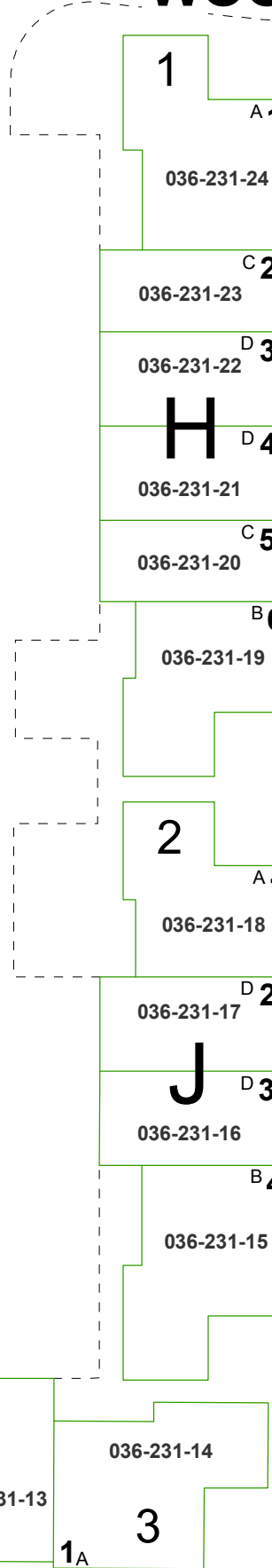
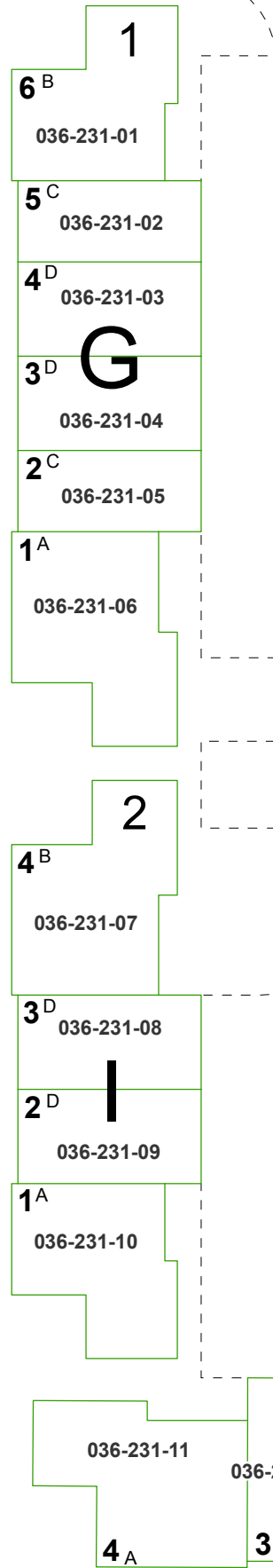
NOTES:  
SEE PG. 036-23 FOR COMMON AREA  
PARCEL AND UNIT DETAILS

B = UNIT TYPE

3 = LOT NUMBER

2 = BUILDING NUMBER

H = SUBDIVISION BLOCK



231

