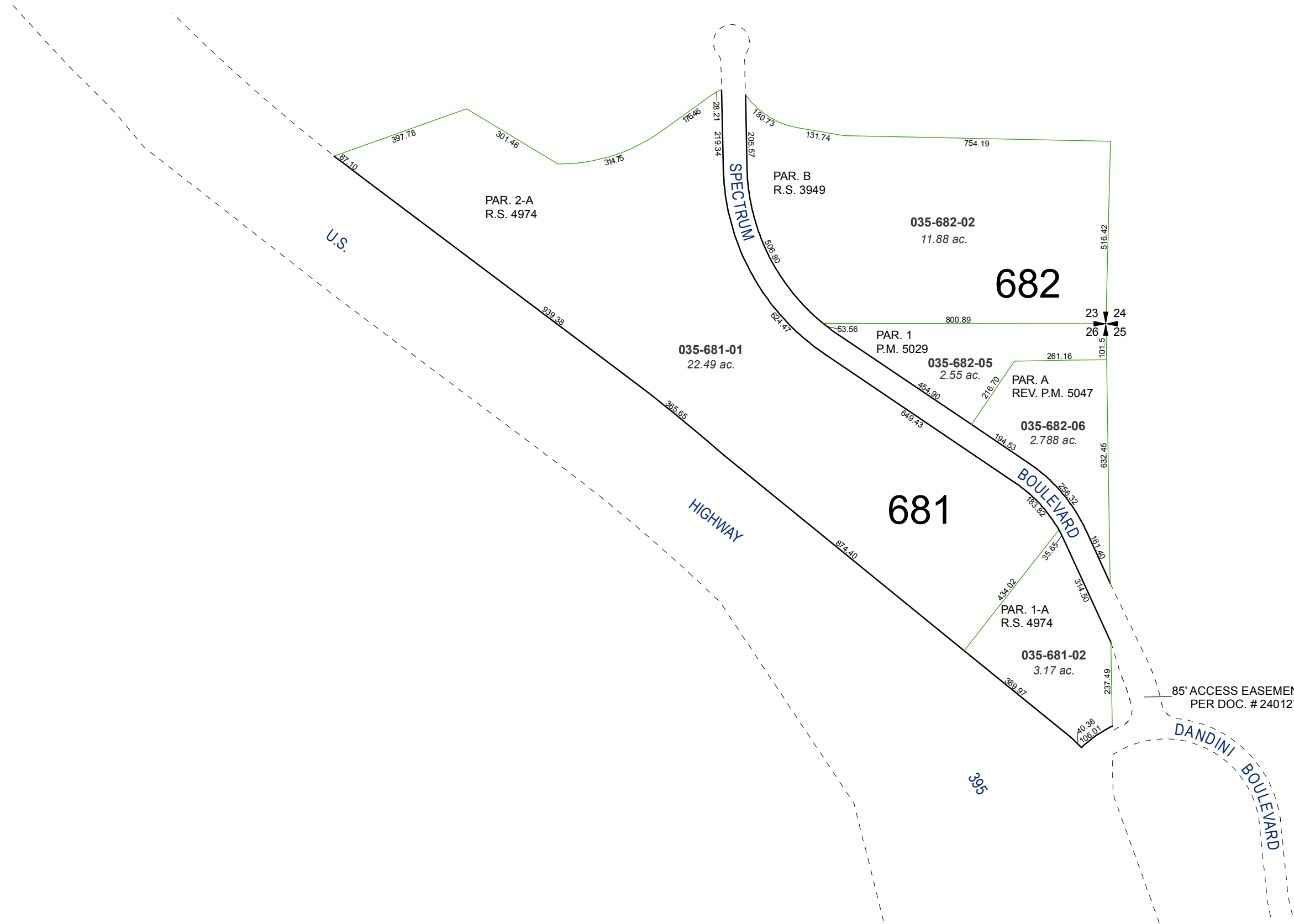


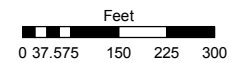
PORTIONS OF THE SE ¼ OF SEC. 23,
AND OF THE NE ¼ OF SEC. 26,
T20N - R19E



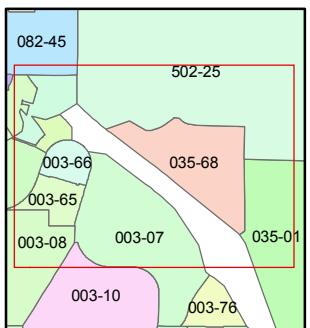
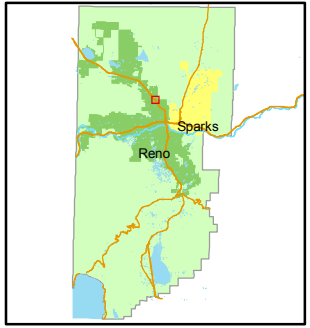
Assessor's Map Number
035-68

STATE OF NEVADA
WASHOE COUNTY
ASSESSOR'S OFFICE
Joshua G. Wilson, Assessor

1001 East Ninth Street
Building D
Reno, Nevada 89512
(775) 328-2231



1 inch = 300 feet



created by: NLH 6/29/2010

last updated: NLH 5/26/11

area previously shown on map(s)
035-01 & 502-25

NOTE: This map was prepared for the use of the Washoe County Assessor for assessment and illustrative purposes only. It does not represent a survey of the premises. No liability is assumed as to the sufficiency or accuracy of the data delineated herein.