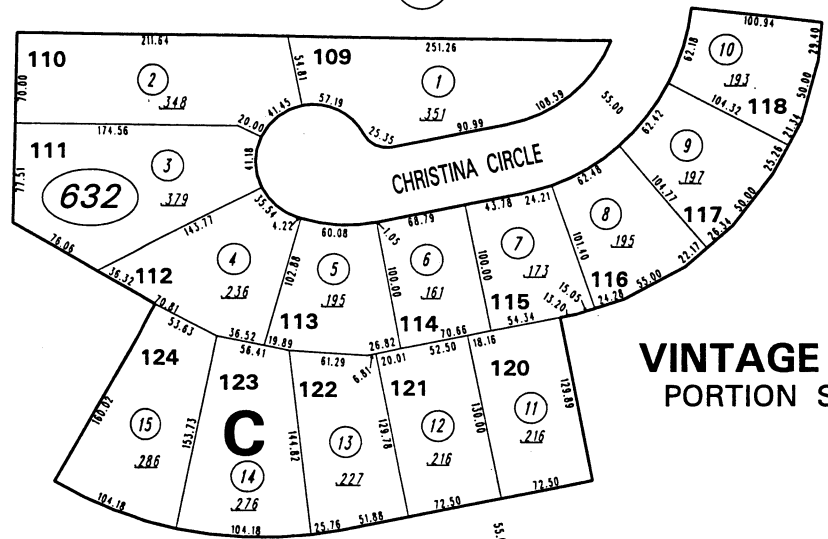
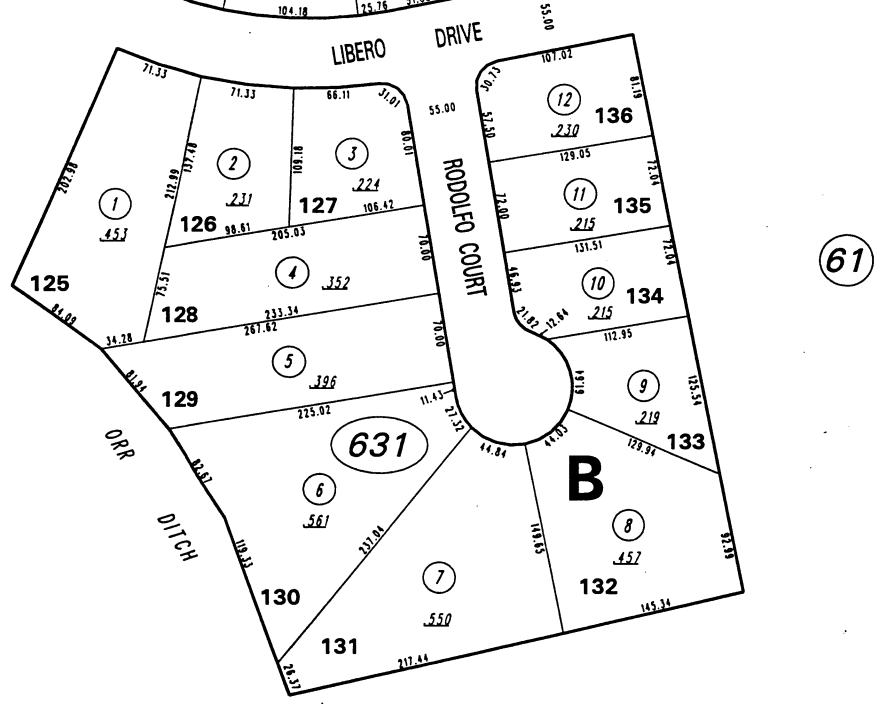


62



514-15

VINTAGE HILLS - UNIT 2 (#3032)
 PORTION SW¼ SECTION 27, T20N - R20E



514-16

61

30

Office of Washoe County Assessor, Nevada - Robert W. McGowan

NOTE: This map is prepared for the use of the Washoe County Assessor for assessment and illustrative purposes only. It does not represent a survey of the premises. No liability is assumed as to the sufficiency or the accuracy of the data delineated hereon.

NOTE:
 ASSESSOR'S BLOCK NUMBERS SHOWN IN ELLIPSES
 ASSESSOR'S PARCEL NUMBERS SHOWN IN CIRCLES

Drawn by <u>RM 5/31/94</u>
Revised <u>5/95</u>

