

(#2307)

# SATELLITE HILLS SUBDIVISION

## UNIT NO. 1

PORTION OF THE SOUTHEAST 1/4  
OF SECTION 27, T20N - R20E

035-44

035-69

035-28

BLVD.

LASER DRIVE

035-47

SATELLITE

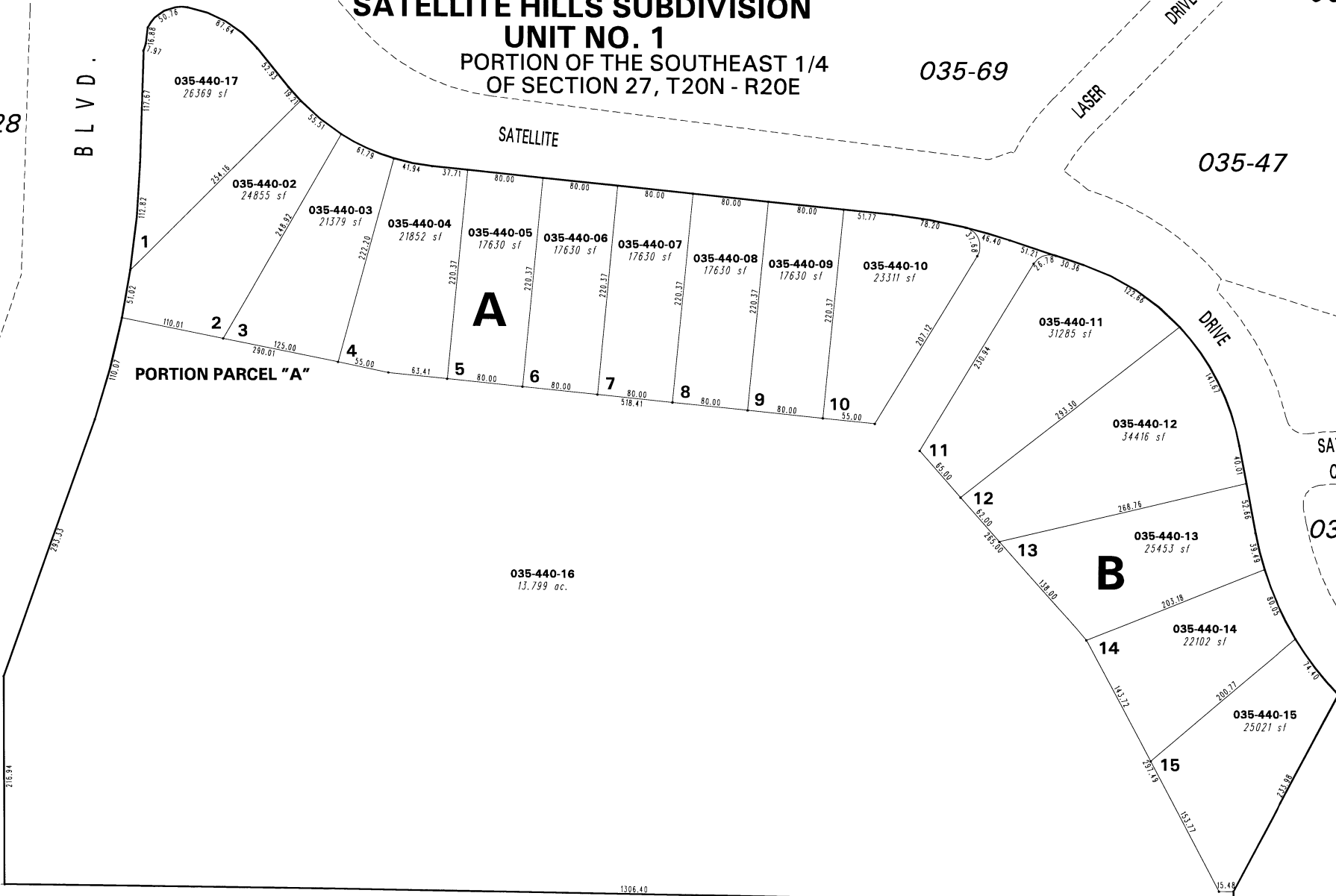
PORTION PARCEL "A"

DRIVE

SATELLITE COURT

035-45

SPARKS



035-44-16  
13.799 ac.

035-44-17  
26369 sf

035-44-02  
24855 sf

035-44-03  
21379 sf

035-44-04  
21852 sf

035-44-05  
17630 sf

035-44-06  
17630 sf

035-44-07  
17630 sf

035-44-08  
17630 sf

035-44-09  
17630 sf

035-44-10  
23311 sf

035-44-11  
31285 sf

035-44-12  
34416 sf

035-44-13  
25453 sf

035-44-14  
22102 sf

035-44-15  
25021 sf

A

B

035-31

This area previously shown on \_\_\_\_\_

NOTE: This map is prepared for the use of the Washoe County Assessor for assessment and illustrative purposes only. It does not represent a survey of the premises. No liability is assumed as to the sufficiency or the accuracy of the data delineated hereon.

Office of Washoe County Assessor, Nevada - Joshua G. Wilson

NOTE: Areas of parcels which are less than 2 acres are shown in square feet.

Drawn by TWT 05/02/06  
Revised NLH 7/02/08



1" = 100'

