

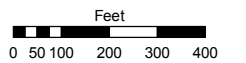
**SOUTH 1/2 SECTION 28
T20N - R20E**

**ANNEX.T.M.3786
ORD.# 2046**

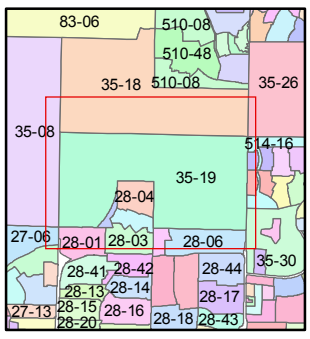
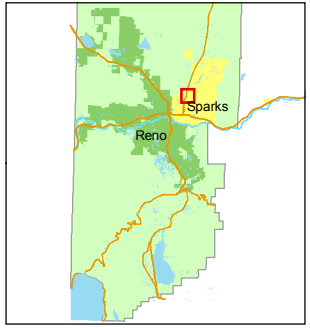
Assessor's Map Number
035-19

STATE OF NEVADA
WASHOE COUNTY
ASSESSOR'S OFFICE
Joshua G. Wilson, Assessor

1001 East Ninth Street
Building D
Reno, Nevada 89512
(775) 328-2231



1 inch = 400 feet



created by: TWT 10/8/2009

last updated: _____

area previously shown on map(s)

NOTE: This map was prepared for the use of the Washoe County Assessor for assessment and illustrative purposes only. It does not represent a survey of the premises. No liability is assumed as to the sufficiency or accuracy of the data delineated hereon.

191

035-191-01
80.777 ac.

192

035-192-04
180.124 ac.

PAR. A 331.57
P.M. 1807
035-192-05
331.78 1.252 ac.

PAR. B
P.M. 1807
035-192-06
331.98 1.253 ac.

PYRAMID
WAY
County
Sparks

VILLA JIMENEZ
WAY
876.17

ORR
DITCH

**BK.
514**

29 28
32 33

28 27
33 34

2599.51

1312.97

2627.92