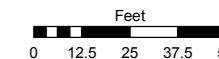


Assessor's Map Number

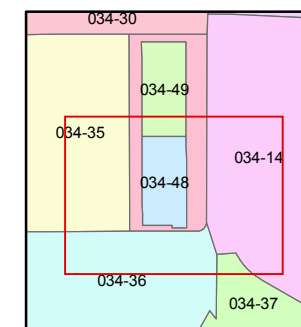
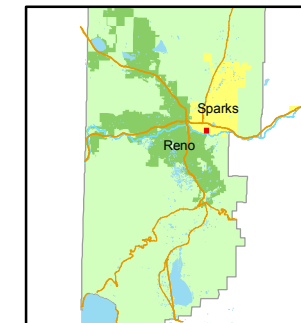
**034-48**

STATE OF NEVADA  
**WASHOE COUNTY**  
**ASSESSOR'S OFFICE**  
Joshua G. Wilson, Assessor

1001 East Ninth Street  
Building D  
Reno, Nevada 89512  
(775) 328-2231



1 inch = 50 feet



created by: KSB 7/06/10

last updated: KSB 8/02/10

area previously shown on map(s)

034-35

NOTE: This map was prepared for the use of the Washoe County Assessor for assessment and illustrative purposes only. It does not represent a survey of the premises. No liability is assumed as to the sufficiency or accuracy of the data delineated hereon.

**(#4944)**  
**10 GREG STREET**  
A COMMERCIAL INDUSTRIAL  
CONDOMINIUM SUBDIVISION  
PORTION OF SW ¼ SECTION 9  
T19N - R20E

WAY

STANFORD

EAST GREG ST.

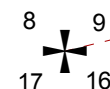
SOUTH  
STANFORD WAY

034-49

034-47

034-47

65.95 <b>034-481-18</b> 1975 sf 65.95	29.95 <b>154</b> 29.95	83.95 <b>034-481-01</b> 2514 sf 83.95	29.95 <b>116</b> 29.95
74.95 <b>034-481-17</b> 3748 sf 74.95	50.00 <b>481</b> 50.00	74.95 <b>034-481-02</b> 3748 sf 74.95	50.00 <b>114</b> 50.00
74.95 <b>034-481-16</b> 2249 sf 74.95	30.00 <b>158</b> 30.00	74.95 <b>034-481-03</b> 2249 sf 74.95	30.00 <b>112</b> 30.00
74.95 <b>034-481-15</b> 2249 sf 74.95	30.00 <b>160</b> 30.00	74.95 <b>034-481-04</b> 2249 sf 74.95	30.00 <b>110</b> 30.00
74.95 <b>034-481-14</b> 2249 sf 74.95	30.00 <b>162</b> 30.00	74.95 <b>034-481-05</b> 2249 sf 74.95	30.00 <b>108</b> 30.00
74.95 <b>034-481-13</b> 2249 sf 74.95	30.00 <b>164</b> 30.00	74.95 <b>034-481-06</b> 2249 sf 74.95	30.00 <b>106</b> 30.00
74.95 <b>034-481-12</b> 2249 sf 74.95	30.00 <b>166</b> 30.00	74.95 <b>034-481-07</b> 2249 sf 74.95	30.00 <b>104</b> 30.00
74.95 <b>034-481-11</b> 2249 sf 74.95	30.00 <b>168</b> 30.00	74.95 <b>034-481-08</b> 2249 sf 74.95	30.00 <b>102</b> 30.00
74.95 <b>034-481-10</b> 3015 sf 74.95	40.23 <b>170</b> 40.23	74.95 <b>034-481-09</b> 3514 sf 74.95	50.14 <b>100</b> 50.14



S 76-33-52 W  
2,405.61'

GREG STREET