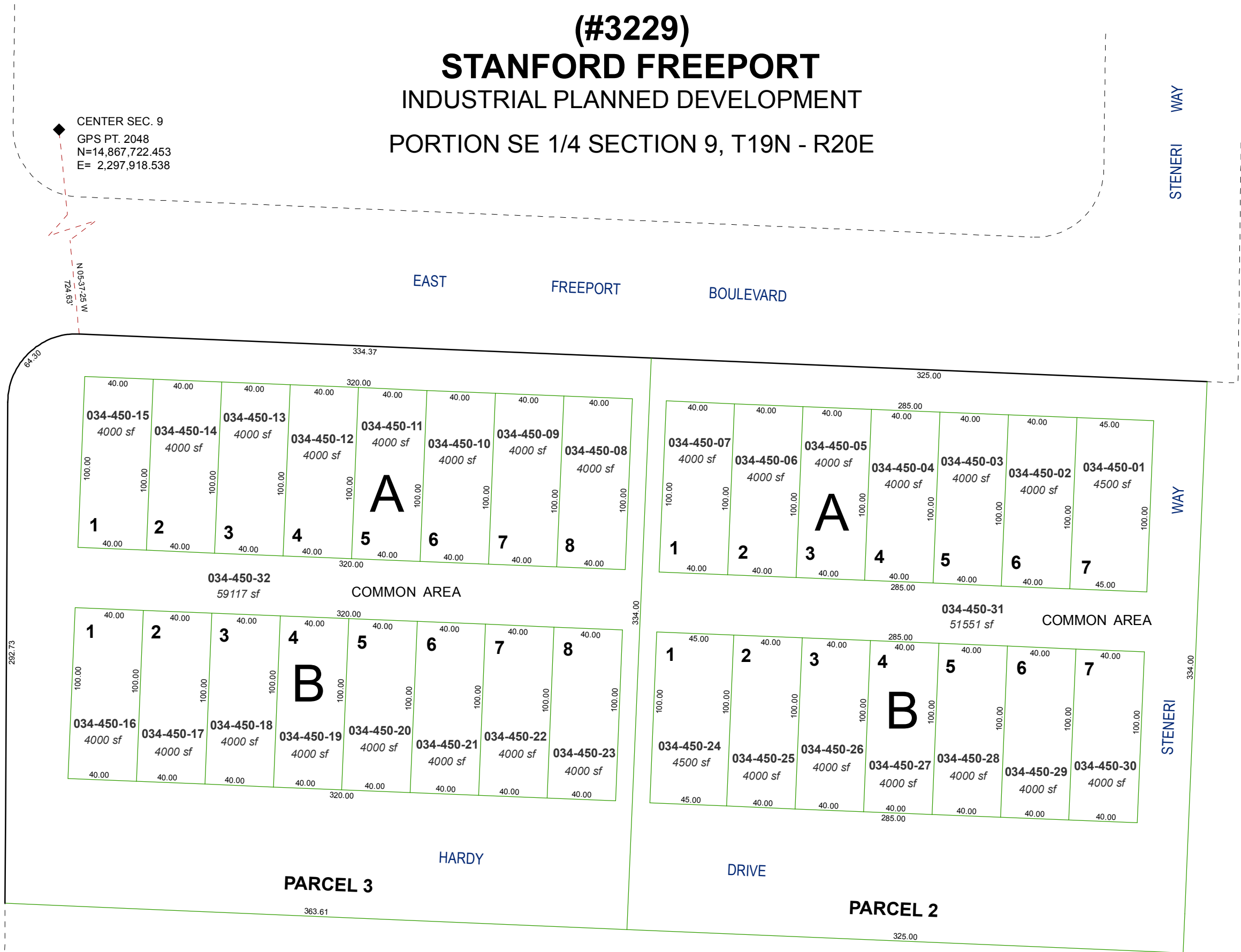


**(#3229)**  
**STANFORD FREEPORT**  
 INDUSTRIAL PLANNED DEVELOPMENT  
 PORTION SE 1/4 SECTION 9, T19N - R20E

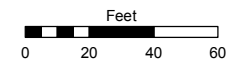
CENTER SEC. 9  
 GPS PT. 2048  
 N=14,867,722.453  
 E= 2,297,918.538



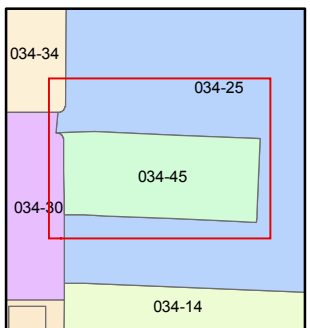
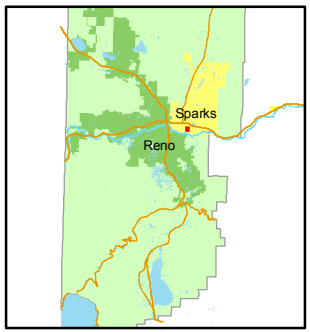
Assessor's Map Number  
**034-45**

STATE OF NEVADA  
**WASHOE COUNTY**  
 ASSESSOR'S OFFICE  
 Joshua G. Wilson, Assessor

1001 East Ninth Street  
 Building D  
 Reno, Nevada 89512  
 (775) 328-2231



1 inch = 60 feet



created by: KSB 2/02/11

last updated: \_\_\_\_\_

area previously shown on map(s)  
034-25

NOTE: Unit Details are shown on Page 034-44

NOTE: This map was prepared for the use of the Washoe County Assessor for assessment and illustrative purposes only. It does not represent a survey of the premises. No liability is assumed as to the sufficiency or accuracy of the data delineated hereon.